

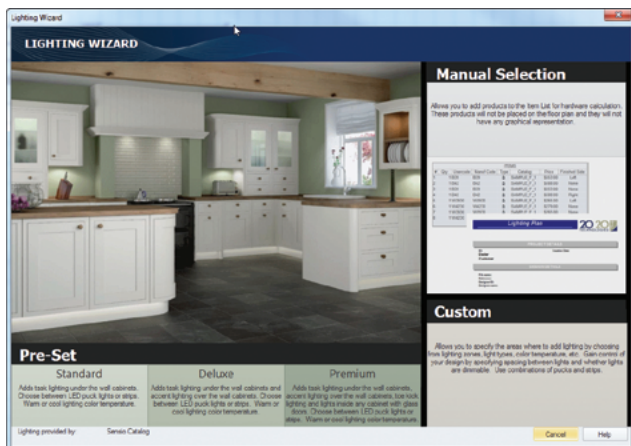


### The Challenge with Lighting

Let's face it—adding task and accent lights to a design can be a complicated matter. Where can they be placed? Which electrical components are required? How much will it all cost the client in the end? In many cases, providing lighting as part of a kitchen plan just hasn't been worthwhile for dealers and designers.

### The Solution: 2020 Design Lighting Wizard

The 2020 Design Lighting Wizard eliminates the complexity of adding task and accent lighting to designs. Designers can now quickly and easily show realistic lighting to customers for existing or new designs. Energy saving LED lights can be added over or under wall cabinets, inside wall cabinets or on toe kicks with just a few clicks creating a more realistic and visually stunning design.



## Benefits

- Easily add innovative and creative lighting to your designs
- Add value by providing a 'one-stop-shopping' design
- Provide energy-efficient and cost-effective lighting solutions to your client

## Features

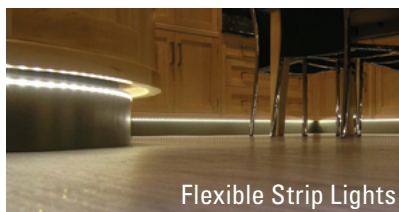
- Visualize and present realistic lighting effects in 3D
- Create a printable lighting plan complete with lighting placement and bill of materials
- Output a complete quote—including lighting
- Flexibility to use pre-set, manual selection or custom light placement
- Directly order lighting products from the manufacturer with 2020 Live Order integration

## Supported Lighting Types

The 2020 Design Lighting Wizard supports puck, rigid strip and flexible strip lighting from industry-leading manufacturers and simplifies the selection process.



Puck Lights



Flexible Strip Lights



Rigid Strip Lights

## System Recommendations

**Operating System:** Windows XP Professional, Windows Vista, Windows 7, Windows 8 (32bit or 64 bit) OR Apple Macintosh OSX using Boot Camp

**Processor:** Dual Core or Quad Core at 2.16GHz

**System Memory:** 3 GB RAM (32 bit OS) or 6 GB RAM (64 bit OS)

**Hard Drive:** 7200 RPM drive with 10 GB or more free disk space (80 GB hard drive or above)

**Graphic Card:** NVidia GeForce or ATI Radeon with 512 MB or more dedicated memory (3D accelerator)

**Resolution:** 1280 x 1024

**Security Device:** USB port

**DVD-Rom Drive:** 8X DVD or higher

TF: +1.866.698.2020 T: +1.514.332.4110 F: +1.514.334.6043 E: sales@2020spaces.com

[2020spaces.com](http://2020spaces.com)

2020

### 2020 Headquarters

20-20 Technologies, Inc.  
400 Armand-Frappier Blvd.  
Suite 2020  
Laval, QC Canada H7V 4B4

### Worldwide Offices

**Americas**  
Laval, QC, Canada  
Cary, NC, USA  
Foxboro, MA, USA  
Grand Rapids, MI, USA  
São Paulo, Brazil

**Europe**  
Wiener Neustadt, Austria  
Mouans-Sartoux, France  
Osnabrück, Germany  
Ashford, UK  
Bolton, UK

**Asia-Pacific**  
Dhaka, Bangladesh  
Beijing, China  
Dongguan, China  
Shanghai, China  
Pune, India