

2020 Cap

The design professional's choice for AutoCAD®-based space planning and specification software.

2020 Cap is an integrated suite of software that automates the design and specification process in your business. It consists of two base applications, 2020 Cap and 2020 Worksheet. 2020 Cap is an AutoCAD®-based space planning tool, and 2020 Worksheet is a powerful tool used for product specification, pricing and creating proposals.

2020spaces.com/2020Cap

The Challenge

The job of office furniture designers is to create innovative spaces and provide accurate furniture specifications. Their clients depend on delivery of precise, complete and on-budget projects. Designers need to have software available that can handle the largest and smallest projects efficiently and accurately, maximizing their business's productivity and profitability.

The Solution

2020 Cap is the perfect solution for designing faster and with fewer errors thanks to the automation of time-consuming tasks and the most up-to-date catalogs in the industry. 2020 Cap adapts to the way designers work while saving them time and saving them time and enabling quicker delivery of projects to clients.

Large-scale drawings can be created directly within AutoCAD®, the standard in the architecture and design community. 2020 Cap is a proven technology investment that decreases operating costs, errors and design time while increasing accuracy, productivity and profits.

"2020 Cap and 2020 Worksheet programs are fundamental tools in my day-to-day job. They are user-friendly and make accuracy and efficiency something I need to worry less about!"

*Jennifer Elliott,
Drechsel Business Interiors*

Benefits

Adapt to your processes

2020 Cap's user interface and features are completely adaptable to existing business and sales processes. The software conforms to your business, not the other way around.

Get the latest product information

Receive the latest catalog content for over 140 manufacturers every month.

Increase planning accuracy

2020 Cap contains the most complete, up-to-date and accurate planning symbol libraries in the industry.

Scale project planning

Create large-scale project drawings directly within AutoCAD®, the industry standard among office furniture dealers.

Maximize productivity

2020 Cap's automation and planning tools help your design teams maximize productivity by eliminating repetitive, time-consuming tasks.

Features

AutoCAD® integration

Build space plans within an AutoCAD® environment. Easily communicate with architects and interior designers by working in files created by any supported version of AutoCAD®.

Explorer

Control all your project data from one powerful interface, including manufacturer content, project hierarchies, custom catalogs, bookmarks and latest search results.

Automation tools

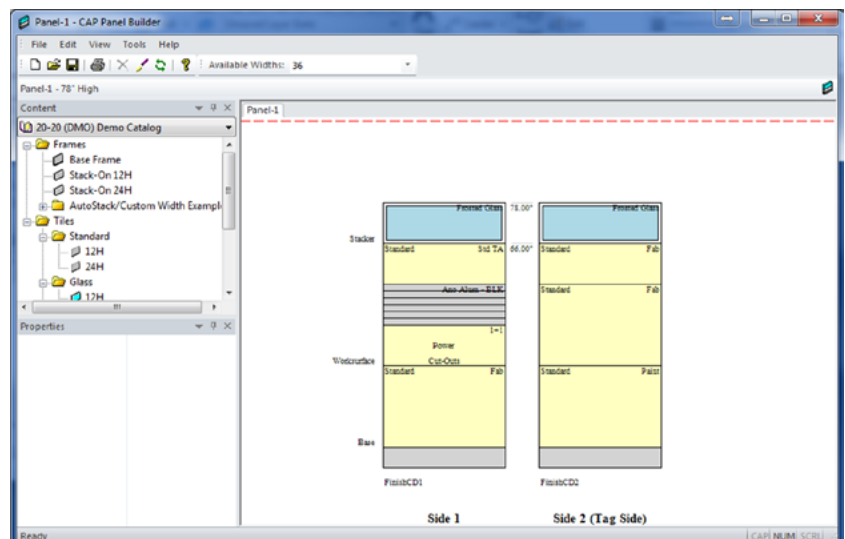
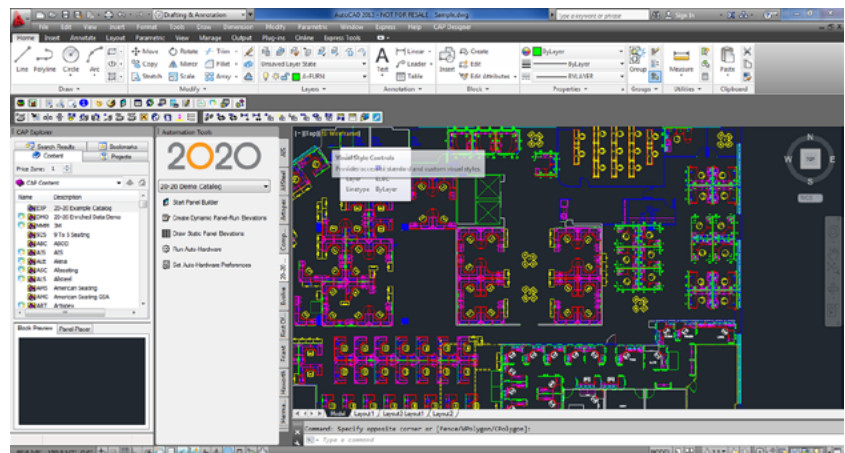
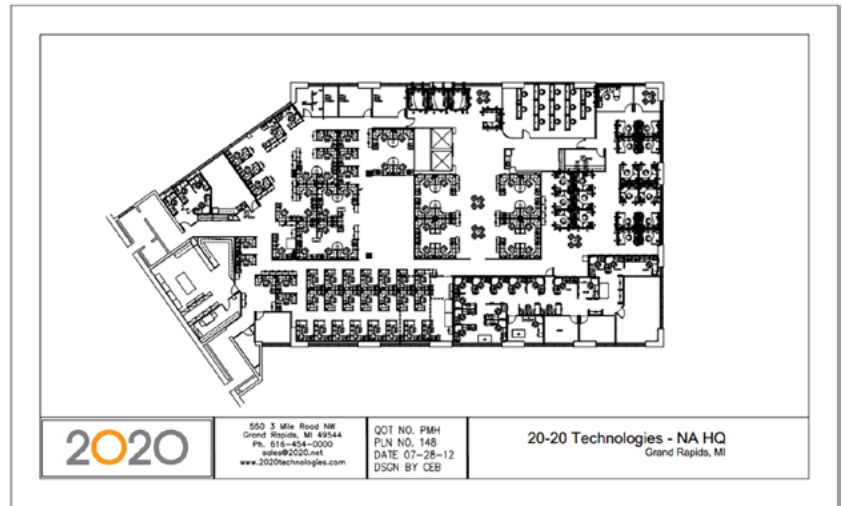
Speed up the design process and increase project accuracy with advanced design automation tools.

Take-off to 2020 Worksheet

Effortlessly generate bills of materials in 2020 Worksheet from project drawings in 2020 Cap. Do a traditional take-off creating a separate Worksheet file or use Associated Worksheets to allow drawing and Worksheet files to be synchronized and up to date in both applications.

2020 Cap standards

Powerful time savers let you create furniture configurations that can be stored and reused as a complete assembly. 2020 Cap standards save time, reduce errors and eliminate repetitive tasks.



Easily build complete frame and tile configurations using 2020 Cap's Panel Builder technology. Panel Builder's rules-based technology helps avoid costly planning errors.



About 2020

2020 helps professional designers, retailers and manufacturers in the interior design and furniture industries capture ideas, inspire innovation and streamline processes. By providing end-to-end solutions and the world's largest collection of manufacturers' catalogs, 2020 provides businesses with the software and content to be more efficient, integrated and productive.



Professional

Enabling professional designers to create kitchens, bathrooms, closets and commercial offices which look as stunning on the screen as they will in reality.



Manufacturing

Providing furniture and cabinet manufacturers a complete manufacturing operations management capability developed to meet their needs.



Retail

Empowering interior home improvement retailers to inspire the imagination of their customers and accelerate decision making.



System Recommendations

Operating System: Microsoft Windows 8 (64 or 32 Bit), Windows 7 (64 or 32 Bit) with latest service packs

Processor: Intel or AMD processor 1.6GHZ or higher (multi core CPU recommended)

Memory: 2 GB (4 GB or more recommended)

Hard Drive: 6-10 GB free disk space for software (size requirements for manufacturer catalogs will vary).

DVD Drive

Screen Resolution: 1280 x 1024

Video Card: A mid-level to high-end 3D-capable video card is recommended with 512MB video memory. A "Windows Experience Index" of 3.0 or higher in Windows 7 is suggested.

Security Device: USB port

AutoCAD® by Autodesk: (required for 2020 Cap only) 2012, 2013, 2014, 2015 or AutoCAD® Architectural 2012, 2013, 2014, 2015

Network Environment: Windows® 2008 Server or better.

NOTE: 2020 does not support Terminal Server/Citrix environments.

TF: +1.800.227.0038 T: +1.616.454.0000 F: +1.616.454.4140 E: commercial.sales@2020spaces.com

2020spaces.com

2020 Headquarters

20-20 Technologies, Inc.

400 Armand-Frappier Blvd.
Suite 2020
Laval, QC Canada H7V 4B4

Worldwide Offices

Americas

Laval, QC, Canada
Cary, NC, USA
Foxboro, MA, USA
Grand Rapids, MI, USA
São Paulo, Brazil

Europe

Wiener Neustadt, Austria
Mouans-Sartoux, France
Osnabrück, Germany
Ashford, UK
Bolton, UK

Asia-Pacific

Dhaka, Bangladesh
Beijing, China
Dongguan, China
Shanghai, China
Pune, India