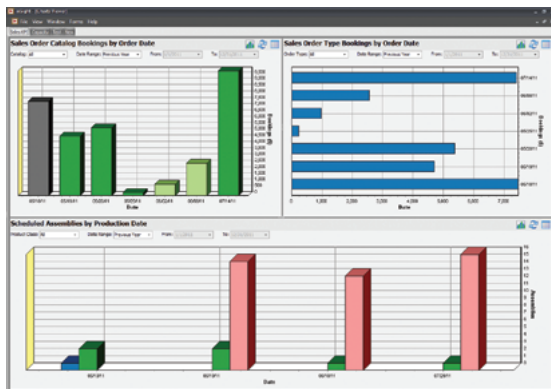


With every part produced and order shipped, new data about production processes, sales orders and market needs are created. 2020 Insight offers integrated reporting tools that turn your operational data into the key performance indicators of your business. The Business Intelligence module provides out of the box charts and pivot tables designed specifically for the furniture manufacturing industry. Transactional data like order backlog, quality defects and capacity constraints can be understood more intuitively through built-in charts, pivot tables and analytical models. 2020 Insight improves the information you use internally and share with customers and suppliers to drive continuous improvement.

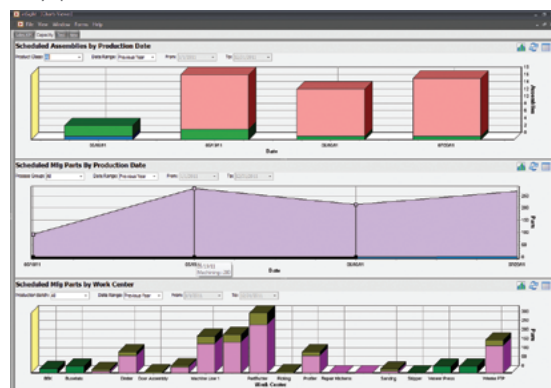
## Make it easier to report on performance.

See transactional data like order backlog, quality defects and capacity constraints in a more intuitive way.



## Make it easier to spot trends and opportunities.

Use current and accurate data to create stunning graphs of key performance results.



## Benefits

### Improve Business Insights

Rich analytical capabilities allow you to slice and dice your operational information any way you need to find issues and opportunities that affect your business.

### Make Better Business Decisions

Information models and reports developed specifically for the furniture industry allow you to quickly turn your transactional data into a guide for better business decisions.

### Learn Quickly

Designed for business leaders, an easy to learn and use desktop provides access to a dashboard of personalized performance measures and information.

### Produce Flexible and Customized Reports

Charts and graphs are 100% user definable to report on the information that is important to you and your business.

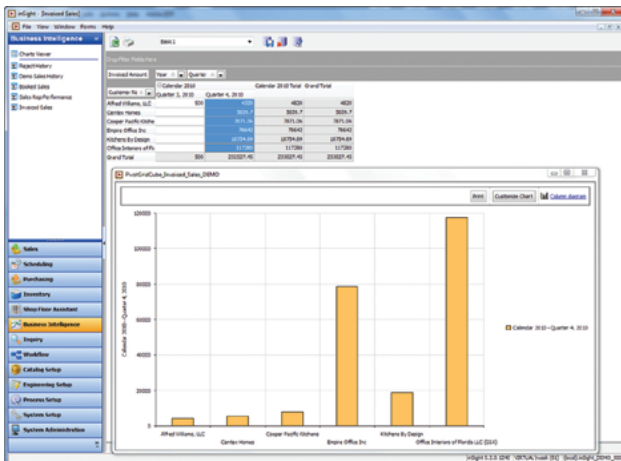
## Make it easier to access timely and accurate information.

Management and operations staff can all share a common view of historical and real-time performance to drive better operational results.



## Make it easier to find the right details.

Use transactional data to build up a view of your business that includes historical and real-time details. Navigate through the information to understand your business like never before.



## Features

### Industrial Data Sets

Out of the box data models are included to enable fast analytical access to booked sales, invoiced sales, reject history and other business metrics that are critical to furniture manufacturers.

### Charting & Graphing

Charting and graphing capabilities are 100% user definable so you can easily access the information that is important to you.

### OLAP Information Engine

Organize data for fast reporting and interactivity. Provide full drill down into transactional details to get to the information you need to know.

### User Access Management

Manage who has access to what information with user level administration that controls rights and privileges to data.

TF: +1.888.216.1844 T: +1.919.319.0888 F: +1.919.319.0884 E: [mfg.sales@2020spaces.com](mailto:mfg.sales@2020spaces.com)

[2020spaces.com](http://2020spaces.com)



### 2020 Headquarters

20-20 Technologies, Inc.  
400 Armand-Frappier Blvd.  
Suite 2020  
Laval, QC Canada H7V 4B4

### Worldwide Offices

#### Americas

Laval, QC, Canada  
Cary, NC, USA  
Foxboro, MA, USA  
Grand Rapids, MI, USA  
São Paulo, Brazil

#### Europe

Wiener Neustadt, Austria  
Mouans-Sartoux, France  
Osnabrück, Germany  
Ashford, UK  
Bolton, UK

#### Asia-Pacific

Dhaka, Bangladesh  
Beijing, China  
Dongguan, China  
Shanghai, China  
Pune, India