



## 2020 Worksheet

**Build detailed quotes, create proposals and generate order-ready specifications with this powerful office furniture specification tool.** 2020

Worksheet is the most powerful furniture specification software in the industry. Select and specify furniture products with the most up-to-date and accurate furniture catalogs for over 140 manufacturers.

With 2020 Worksheet, you can establish a single specification platform throughout your business and standardize discounting, quoting, reporting and order entry.

[2020spaces.com/2020Worksheet](https://2020spaces.com/2020Worksheet)

# 2020 Worksheet

## The Challenge

Being the first to present a complete furniture quote often has a big impact on whether a project is won or lost. In order to do this, a business needs to have a consistent platform for all departments to keep the project rolling, shorten the sales cycle and reduce errors. Sales teams need to be empowered to work independently and build their own quotes using software that can electronically communicate with other team members to create a seamless flow of information.

## The Solution

2020 Worksheet is the specification tool for 2020 Cap, 2020 Giza and 2020 Visual Impression. It allows your sales and design teams to communicate project data with each other and with other areas of your business. You can turn around detailed and customized proposals to customers quickly and avoid pricing errors with up-to-date product information and pricing. 2020 Worksheet is the essential tool for your entire business for quoting and specifying commercial furniture.

## Benefits

### Outpace the competition

Deliver more detailed, accurate and complete quotes faster than the competition.

### Get the latest product information

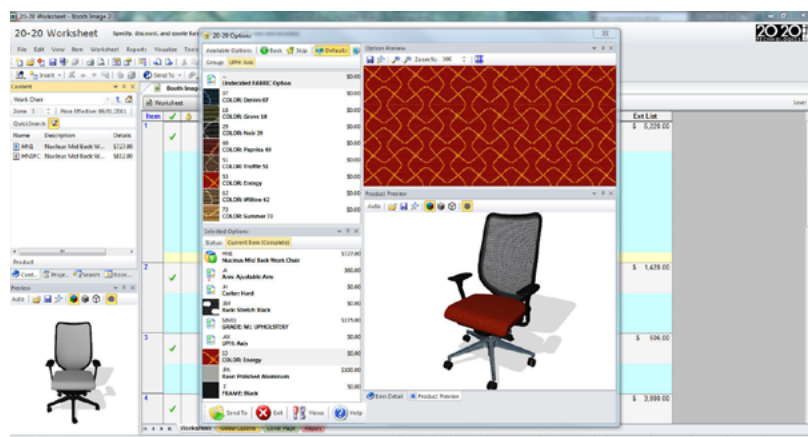
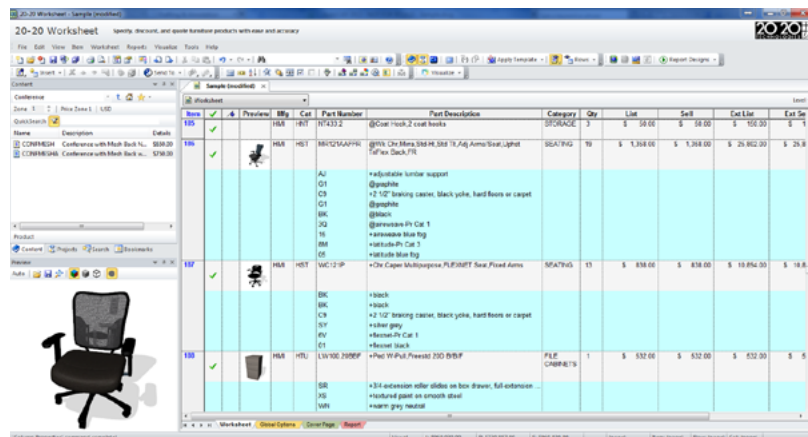
Receive the latest product information for over 140 manufacturers each month.

### Create a fluid information flow

Communicate project data between design and sales teams electronically for a seamless flow of information.

### Adapt the solution to your business processes

Integrate the 2020 Worksheet software, user interface and features into your existing business and sales processes. The software conforms to your business, not the other way around.



## Features

## Standardized common platform

Increase communication and decrease errors when your business is using the same software and data. Project files stay in synch and are compatible.

## Product and option preview

Visually identify furniture products to select the proper one. View images within the specification and add them to proposals and reports.

## Report and proposal templates

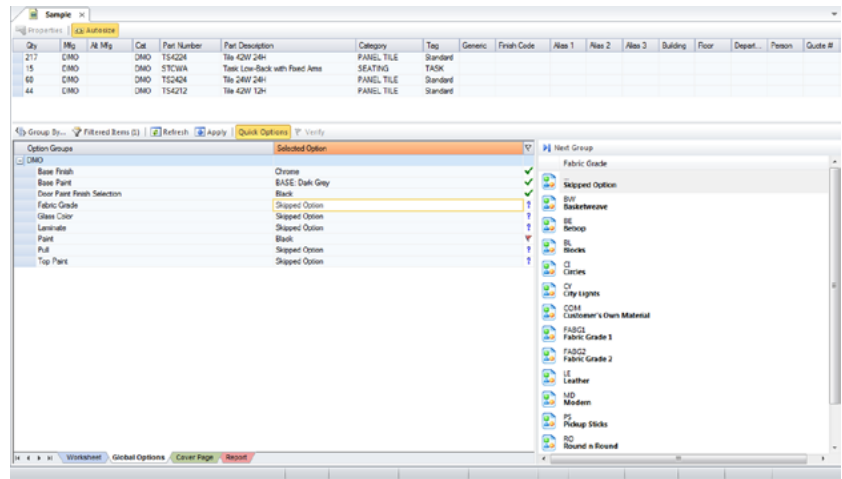
Build reusable custom reports and proposal templates that can quickly be applied to any project, creating professional presentations in seconds.

## Global option application

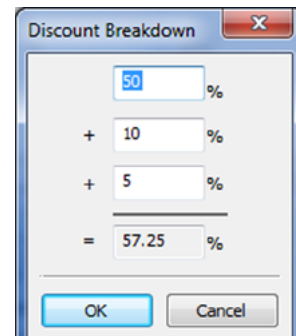
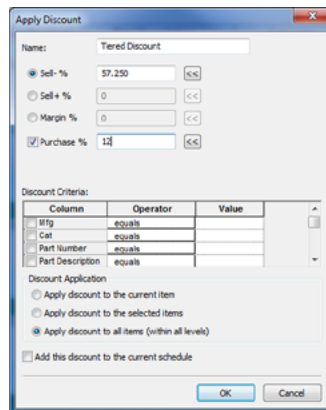
Select common options and finishes once and apply them throughout a project, eliminating repetitive product option selections and reducing errors.

## Discounting and pricing

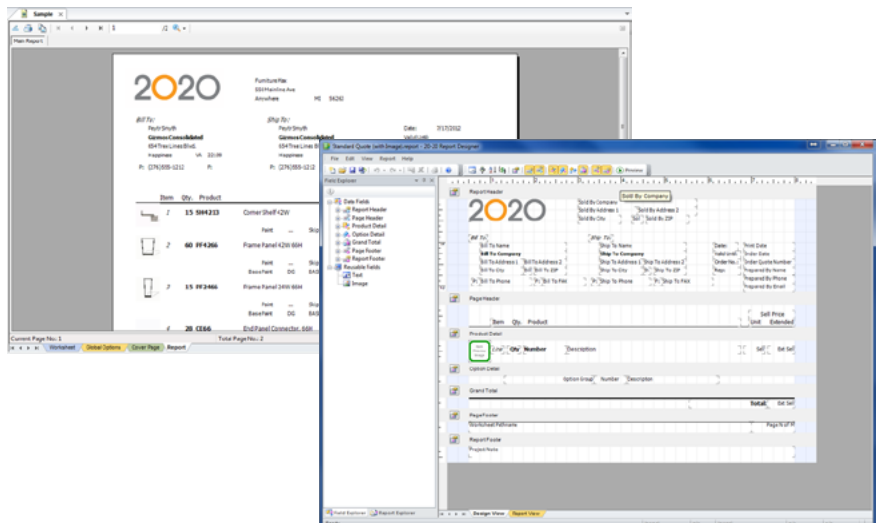
Quickly set up discounting structures based on a variety of criteria. Save and share customer-specific discount schedules to increase efficiency and prevent customer dissatisfaction.



Easily and accurately select product options and finishes throughout your project in minutes.



Set project discounts based on standard tiered discounting and apply discounts based on selected criteria.



Access hundreds of custom project attributes to build completely customized, reusable reports and proposals.



## About 2020

2020 helps professional designers, retailers and manufacturers in the interior design and furniture industries capture ideas, inspire innovation and streamline processes. By providing end-to-end solutions and the world's largest collection of manufacturers' catalogs, 2020 provides businesses with the software and content to be more efficient, integrated and productive.



### Professional

Enabling professional designers to create kitchens, bathrooms, closets and commercial offices which look as stunning on the screen as they will in reality.



### Manufacturing

Providing furniture and cabinet manufacturers a complete manufacturing operations management capability developed to meet their needs.



### Retail

Empowering interior home improvement retailers to inspire the imagination of their customers and accelerate decision making.



## System Recommendations

**Operating System:** Microsoft Windows 8 (64 or 32 Bit), Windows 7 (64 or 32 Bit) with latest service packs

**Processor:** Intel or AMD processor 1.6GHZ or higher (multi core CPU recommended)

**Memory:** 2 GB (4 GB or more recommended)

**Hard Drive:** 6-10 GB free disk space for software (size requirements for manufacturer catalogs will vary).

**DVD Drive**

**Screen Resolution:** 1280 x 1024

**Video Card:** A mid-level to high-end 3D-capable video card is recommended with 512MB video memory. A "Windows Experience Index" of 3.0 or higher in Windows 7 is suggested.

**Security Device:** USB port

**AutoCAD® by Autodesk:** (required for 2020 Cap only) 2012, 2013, 2014, 2015 or AutoCAD® Architectural 2012, 2013, 2014, 2015

**Network Environment:** Windows® 2008 Server or better.

NOTE: 2020 does not support Terminal Server/Citrix environments.

TF: +1.800.227.0038 T: +1.616.454.0000 F: +1.616.454.4140 E: [commercial.sales@2020spaces.com](mailto:commercial.sales@2020spaces.com)

[2020spaces.com](http://2020spaces.com)

## 2020 Headquarters

**20-20 Technologies, Inc.**  
400 Armand-Frappier Blvd.  
Suite 2020  
Laval, QC Canada H7V 4B4

## Worldwide Offices

### Americas

Laval, QC, Canada  
Cary, NC, USA  
Foxboro, MA, USA  
Grand Rapids, MI, USA  
São Paulo, Brazil

### Europe

Wiener Neustadt, Austria  
Mouans-Sartoux, France  
Osnabrück, Germany  
Ashford, UK  
Bolton, UK

### Asia-Pacific

Dhaka, Bangladesh  
Beijing, China  
Dongguan, China  
Shanghai, China  
Pune, India