

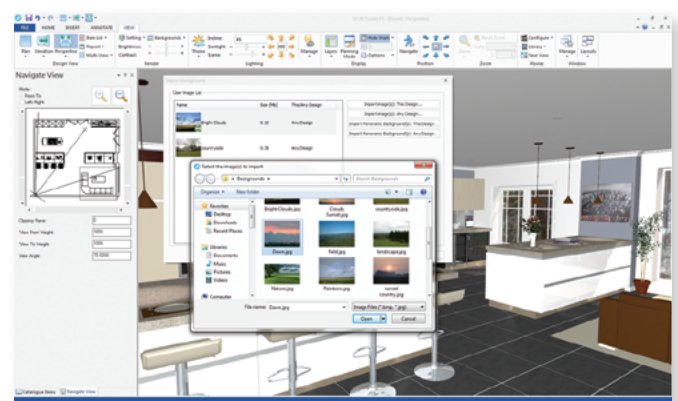
### Drag and Drop and Repositioning in Perspective View

Previously, it was only possible to add new items using 'drag and drop' in the plan and elevation views. Designers can now drag and drop manufacturers' items, including windows, doors and niches directly from the catalogue items palette into the perspective view. Similarly moving existing objects within the design area could only be done in the plan and elevation views. In 2020 Fusion 3.0, designers can now also reposition items directly in the perspective view, making it easier and faster to get that perfect final positioning.

### Background Enhancements

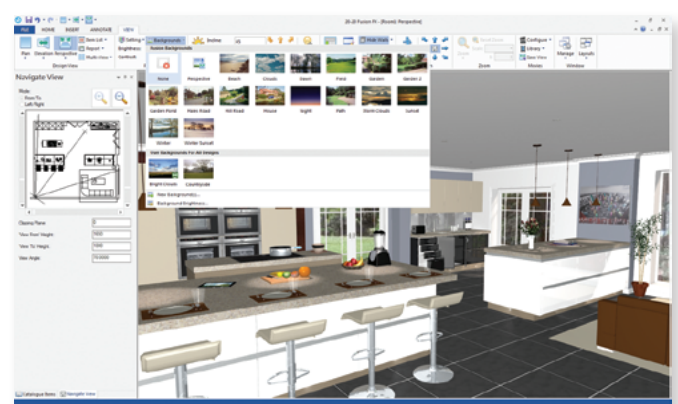
#### Easily Change or Add New Backgrounds

Adding or changing a background is easier in 2020 Fusion 3.0 as they can now be selected independently of the renders. Individual backgrounds can now be freely chosen on a view specific basis (plan, elevation and perspective) and will automatically be displayed across all qualifying renders without the need for further user configuration. Previews of available backgrounds, both catalogue based and user-added, can be accessed from a dedicated gallery control on the 'View' tab.



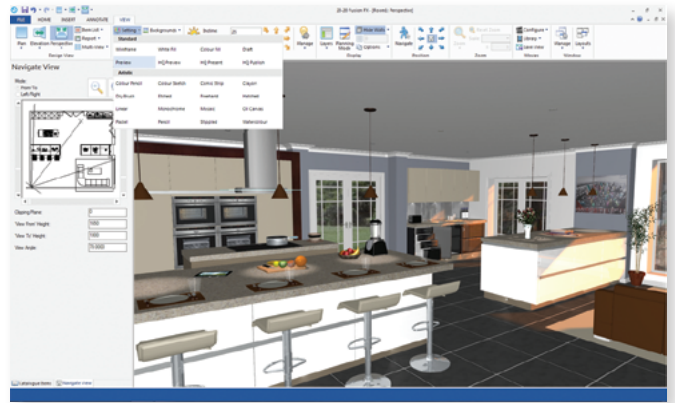
### New Panoramic Backgrounds

2020 Fusion 3.0 can now display panoramic (HDR) backgrounds in a range of image types and formats. The new panoramic backgrounds show a true 3D representation of what can be seen through a window or aperture when the user changes the viewpoint in the design. As with standard backgrounds, designers can choose from a selection of panoramic backgrounds available in existing 2020 Fusion catalogues or import their own.



## New Standard Rendering Presets

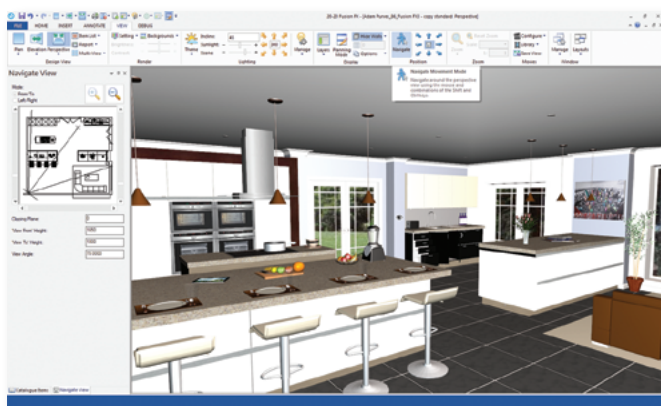
Eight new standard preset renders are now offered, ranging from a basic 'wireframe' for the early stages of planning, right through to a high quality 'publish' render, suitable for portfolio-standard output. The new render pre-sets have been carefully designed to allow designers to quickly and easily display different quality renderings to complement the various stages of their design workflow, without having to spend valuable time configuring settings themselves. All of the artistic render options have also been similarly optimised in 2020 Fusion 3.0.



## New 'Navigate' Mode

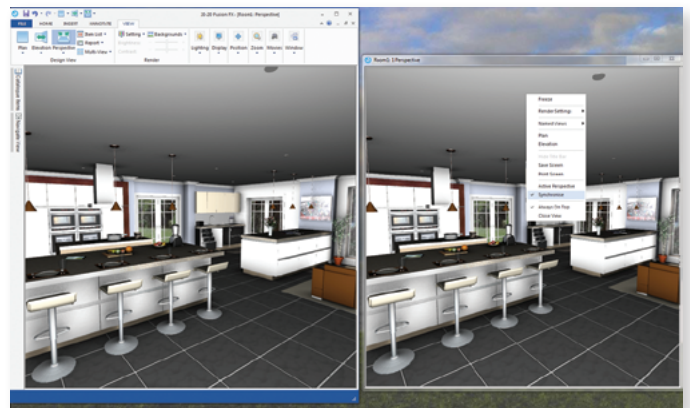
2020 Fusion 3.0 now uses a single, integrated perspective view navigation mode, replacing the series of 'individual' modes previously accessible from the 'View' tab.

The new navigation mode makes it much easier and faster for the designer to review or showcase a design to a client in the perspective view. Users can walk, look around, drag and orbit within the design all in a single mode by using a combination of pressing the shift or control keys while moving the mouse.



## Synchronised View Enhancement

2020 Fusion's design and presentation views have been enhanced so that it is now possible for them to share the same navigational movement. The synchronisation of these views gives the designer the certainty that the customer will see exactly the same journey around the design on the presentation screen as is shown on the design screen.



2020 Fusion 3.0 contains many other features and enhancements. Contact support for a complete list.

**T:** +44 (0) 1233 649700 **F:** +44 (0) 1233 627855 **E:** [fusionsales@2020spaces.com](mailto:fusionsales@2020spaces.com)

**2020spaces.com**

# 2020

## 2020 Headquarters

**20-20 Technologies, Inc.**  
400 Armand-Frappier Blvd.  
Suite 2020  
Laval, QC Canada H7V 4B4

## Worldwide Offices

### Americas

Laval, QC, Canada  
Cary, NC, USA  
Foxboro, MA, USA  
Grand Rapids, MI, USA  
São Paulo, Brazil

### Europe

Wiener Neustadt, Austria  
Mouans-Sartoux, France  
Osnabrück, Germany  
Ashford, UK  
Bolton, UK

### Asia-Pacific

Dhaka, Bangladesh  
Guangzhou, China  
Shanghai, China  
Pune, India