

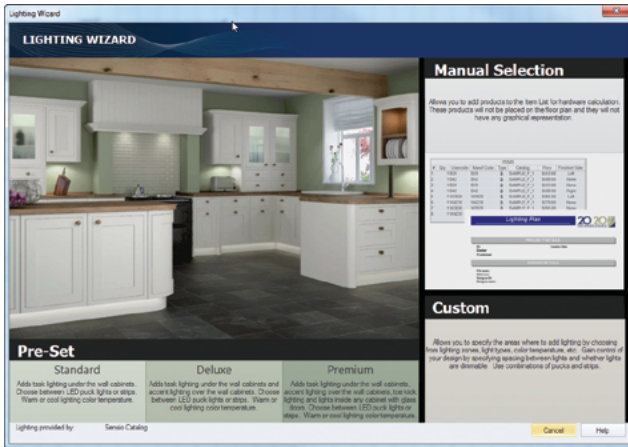


The Challenge with Lighting

Let's face it—adding task and accent lights to a design can be a complicated matter. Where can they be placed? Which electrical components are required? How much will it all cost the client in the end? In many cases, providing lighting as part of a kitchen plan just hasn't been worthwhile for dealers and designers.

The Solution: 2020 Design Lighting Wizard

The 2020 Design Lighting Wizard eliminates the complexity of adding task and accent lighting to designs. Designers can now quickly and easily show realistic lighting to customers for existing or new designs. Energy saving LED lights can be added over or under wall cabinets, inside wall cabinets or on toe kicks with just a few clicks creating a more realistic and visually stunning design.



Benefits

- Easily add innovative and creative lighting to your designs
- Add value by providing a 'one-stop-shopping' design
- Provide energy-efficient and cost-effective lighting solutions to your client

Features

- Visualize and present realistic lighting effects in 3D
- Create a printable lighting plan complete with lighting placement and bill of materials
- Output a complete quote—including lighting
- Flexibility to use pre-set, manual selection or custom light placement
- Directly order lighting products from the manufacturer with 2020 Live Order integration

Supported Lighting Types

The 2020 Design Lighting Wizard supports puck, rigid strip and flexible strip lighting from industry-leading manufacturers and simplifies the selection process.



Puck Lights



Flexible Strip Lights



Rigid Strip Lights

System Recommendations

Operating System: Windows XP Professional, Windows Vista, Windows 7, Windows 8 (32bit or 64 bit) OR Apple Macintosh OSX using Boot Camp

Processor: Dual Core or Quad Core at 2.16GHz

System Memory: 3 GB RAM (32 bit OS) or 6 GB RAM (64 bit OS)

Hard Drive: 7200 RPM drive with 10 GB or more free disk space (80 GB hard drive or above)

Graphic Card: NVidia GeForce or ATI Radeon with 512 MB or more dedicated memory (3D accelerator)

Resolution: 1280 x 1024

Security Device: USB port

DVD-Rom Drive: 8X DVD or higher

2020spaces.com

2020 Headquarters

20-20 Technologies, Inc.
400 Armand-Frappier Blvd.
Suite 2020
Laval, QC Canada H7V 4B4

TF: +1.866.698.2020
T: +1.514.332.4110
F: +1.514.334.6043
E: sales@2020spaces.com

2020
AUTHORIZED
PARTNER