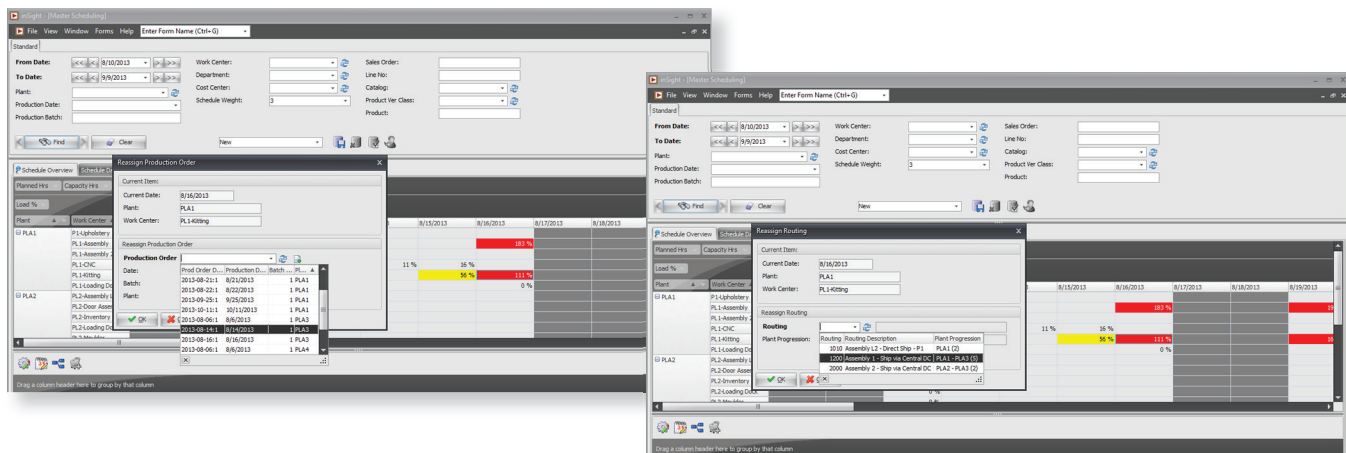


Master Scheduling

Manage your production capacity consumption through real-time visual planning and interactive scheduling in one screen. Select any date and work center, and move production items within the schedule in real time. The form's easy-to-use pivot grid includes planned and committed production orders, allowing you to easily identify potential bottlenecks in production and proactively manage your workload. The result is faster and more effective scheduling, improved capacity utilization, improved flexibility in managing demand peaks and valleys, and reduced late shipments and unplanned overtime.

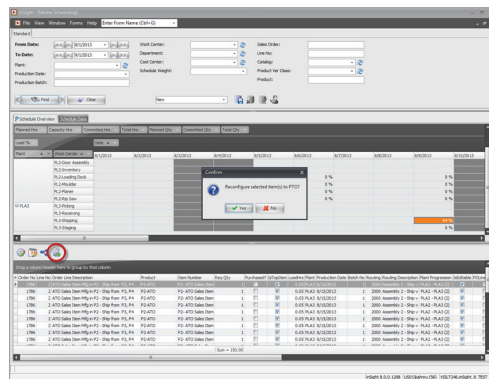
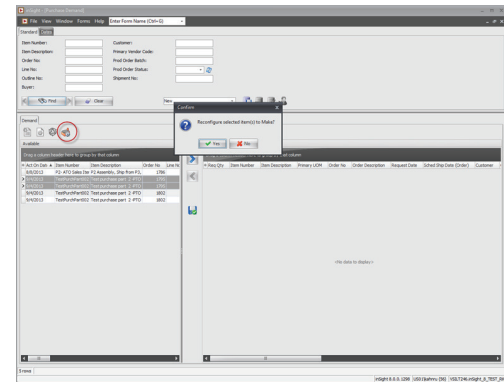
Multi-Plant Extension

Manage multiple plants from within a single database with the optional Multi-Plant extension. Use the Master Scheduling form to schedule all of your locations from a single screen, and then use the Multi-Plant extension to route production through multiple locations on-demand or via established business rules. Automatically supply parts from one plant to another, update bills of material based on where an item is produced and produce the item based on where it will be delivered. The ability to manage inventory and purchasing centrally or by location provides you with critical visibility and control, leveraging redundant manufacturing capabilities and the need to manually track production across locations.



Outsource/Insource Entire Components

Switch make-to-order items (finished goods or components) to purchase-to-order items, and visa-versa, using the Master Scheduling and Purchase Demand forms. React quickly to peak or short-lead time demand by utilizing subcontractors as needed, and capitalize on short-term price fluctuations in raw material/labor costs without changing bills of materials—all with the touch of a button. No heavy manual intervention required.

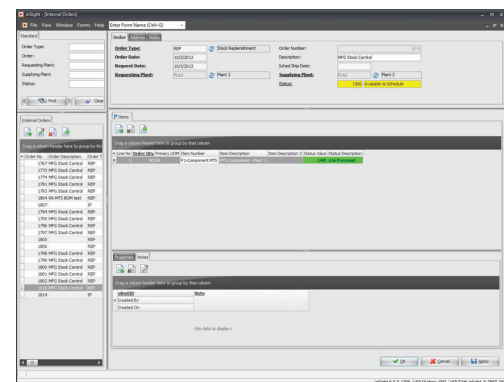


Outsource Specific Manufacturing Operations

Outsourced items are sent to a vendor for some portion or portions of the manufacturing process. Automatically add outsourced items to purchase demand during BOM processing and return vendor-completed items to production. When items are received from the vendor, the system automatically updates the work order status and closes the purchase orders associated with the items. This process reduces indirect labor costs associated with manually tracking outsourced work, improves cost controls, and enhances the visibility of outside work. Plus, it eliminates “lost” inventory.

Internal Orders

Use the Internal Orders form to place replenishment orders and inter-plant inventory transfer requests. The form provides a tracking system for inventory requests and transfers between plants, and eliminates the need for extra product version data setup—you simply order by part number—resulting in simplified ordering of manufacture-to-stock replenishment items.



2020spaces.com

2020 Headquarters

20-20 Technologies, Inc.

400 Armand-Frappier Blvd.

Suite 2020

Laval, QC Canada H7V 4B4

TF: +1.888.216.1844

T: +1.919.319.0888

F: +1.919.319.0884

E: mfg.sales@2020spaces.com

2020
AUTHORIZED
PARTNER