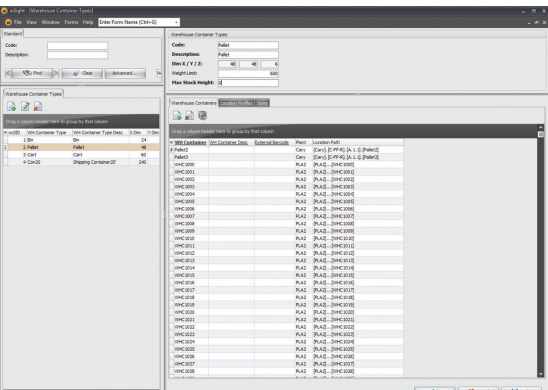


Inventory management is challenging as there are so many moving parts. In order to manage costs and ensure on-time deliveries, it is important to stay organized, automated and efficient. The Warehouse Management Module adds to existing inventory management features in 2020 Insight by providing dedicated warehouse management functionality. It allows the ability to associate multiple warehouses per existing plants and manage the transfer of goods from one location to another saving both time and money. Accurately store items, guide operators to the exact location of goods, and customize containers to match your actual physical products and material handling methods.

### Organize your warehouse by container types.

Specify as many container formats as required, including pallet, bin, cart or any other container type. All aspects of a container can be customized, including weight, height, width and maximum stacking height.



### Easily find items, wherever they are.

Specify the exact location of items including precise container, warehouse and plant level data.



## Benefits

### Reduce inventory errors

Rely on reliable automated business logic and rules to reduce errors, and use graphical move orders to ensure items get to the right locations.

### Optimize space and reduce holding costs

Benefit from using warehouse containers and their relationships with items/locations to reflect the physical organization within the warehouse.

### Reduce labor costs

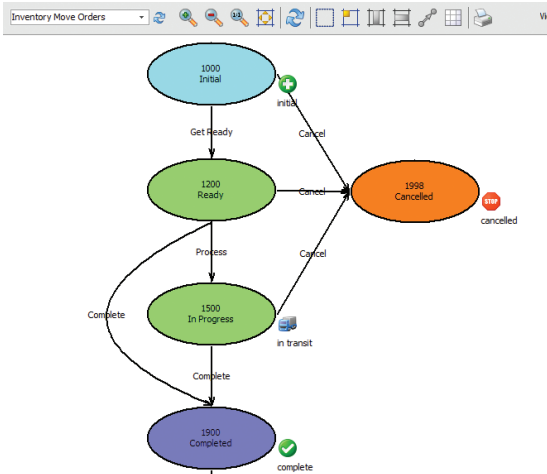
Reduce labor costs through reduction of put-away/pick-up travel time and make it easier for operators to find items.

### Improve on-time shipments

Improve overall plant efficiency and delivery times using optimized inventory management best practices.

## Ensure items get where they need to be.

The Warehouse Management Module also includes functionality called ‘inventory move orders’. Create easy to understand instructions for operators to quickly and painlessly move items within a warehouse and view which move orders have been completed and which are still outstanding.



## Add location business rules and logic.

Create rules for warehouse locations to specify whether items can be added or removed, which container types are allowed per location, space consumption methods and more.

The screenshot shows the 'Warehouse' configuration window. The 'Code' is 'A-FP-B'. The 'Description' is 'A-Finished Parts Block'. The 'Plant' is 'Apea'. The 'Warehouse Type' is 'Block'. The 'Access Type' is 'LIFO'. The 'Template' is 'Block %1, Column %2'. The 'Barcode' is empty. Below the configuration window is a table of locations.

Location	Location Description	Block	External Barcode	Name	Column	Location Profile	Allow Entry?	Allow Removal?	In Use?
A.1	Block A, Column 1	✓		A	1	Dimension	✓	✓	✓
A.2	Block A, Column 2	✓		A	2	Dimension	✓	✓	✓
A.3	Block A, Column 3	✓		A	3	Dimension	✓	✓	✓
A.4	Block A, Column 4	✓		A	4	Dimension	✓	✓	✓
B.1	Block B, Column 1	✓		B	1	Dimension	✓	✓	✓
B.2	Block B, Column 2	✓		B	2	Dimension	✓	✓	✓
B.3	Block B, Column 3	✓		B	3	Dimension	✓	✓	✓
B.4	Block B, Column 4	✓		B	4	Dimension	✓	✓	✓
A.10	Block A, Column 10	✓		A	10	Dimension	✓	✓	✓
A.11	Block A, Column 11	✓		A	11	Dimension	✓	✓	✓
A.12	Block A, Column 12	✓		A	12	Dimension	✓	✓	✓
A.13	Block A, Column 13	✓		A	13	Dimension	✓	✓	✓
A.14	Block A, Column 14	✓		A	14	Dimension	✓	✓	✓
A.15	Block A, Column 15	✓		A	15	Dimension	✓	✓	✓
A.16	Block A, Column 16	✓		A	16	Dimension	✓	✓	✓
A.17	Block A, Column 17	✓		A	17	Dimension	✓	✓	✓
A.18	Block A, Column 18	✓		A	18	Dimension	✓	✓	✓
A.19	Block A, Column 19	✓		A	19	Dimension	✓	✓	✓
A.20	Block A, Column 20	✓		A	20	Dimension	✓	✓	✓
A.21	Block A, Column 21	✓		A	21	Dimension	✓	✓	✓
A.22	Block A, Column 22	✓		A	22	Dimension	✓	✓	✓
A.23	Block A, Column 23	✓		A	23	Dimension	✓	✓	✓
A.24	Block A, Column 24	✓		A	24	Dimension	✓	✓	✓
A.25	Block A, Column 25	✓		A	25	Dimension	✓	✓	✓
A.26	Block A, Column 26	✓		A	26	Dimension	✓	✓	✓
A.27	Block A, Column 27	✓		A	27	Dimension	✓	✓	✓
A.28	Block A, Column 28	✓		A	28	Dimension	✓	✓	✓
A.29	Block A, Column 29	✓		A	29	Dimension	✓	✓	✓
A.30	Block A, Column 30	✓		A	30	Dimension	✓	✓	✓

## Features

### Business rules and logic

Execute business rules for the movement of goods, tailored to the unique requirements of the manufacturer.

### Detailed item locations

Adds detailed warehouse, location, container master data with control over item-container-location relationships, and specific functions to manage common storage methods such as ‘rack’ and ‘block’ storage.

### User-defined container types

A warehouse container is a material handling device, which could be a bin, pallet, cart or any other type of container used to move materials.

### Graphical move orders

The business rules controlling move orders can be modified using an easy to use graphical flow chart.

2020spaces.com

## 2020 Headquarters

20-20 Technologies, Inc.

400 Armand-Frappier Blvd.

Suite 2020

Laval, QC Canada H7V 4B4

TF: +1.888.216.1844

T: +1.919.319.0888

F: +1.919.319.0884

E: mfg.sales@2020spaces.com

2020  
AUTHORIZED  
PARTNER