



2020 Design

Design, plan and visualize kitchens and bathrooms with thousands of flexible products from manufacturer catalogs and stunning 3D renderings.

Improve the design experience for you and your clients with new mobile features. 2020 Design is used the world over by kitchen & bath retailers, home builders & remodelers, home improvement centers, independent designers, architects and even students! In fact, 2020 Design can be used by anyone wishing to bring their design ideas to life, with an easy-to-use CAD solution.

TRY IT FREE
2020spaces.com/freetrial

2020spaces.com/2020Design

2020 Design

The Challenge

Designing beautiful spaces accurately and quickly is important if you want to grow your business. Pen and paper is a legacy system that is time consuming and doesn't allow your customers to easily visualize the finished product. Keeping up to date with the latest technologies is necessary in order to fulfill your customers' needs and stay competitive. 3D software programs can be difficult to master while not all design software gives you access to the catalogs you need and accurate pricing and quoting can be a challenge as well.

The Solution

Design, plan and visualize kitchens and bathrooms with 2020 Design's thousands of flexible products from manufacturer catalogs and stunning 3D renderings. Created specifically for kitchen and bath professionals, this CAD software's built-in rules ensure that projects comply with industry design standards, from start to perfect finish. Plus, get advanced capabilities for closets and home organization with add-on modules.



Benefits

Access thousands of manufacturer catalogs

By providing end-to-end solutions and the world's largest collection of manufacturer's catalogs, 2020 provides you with the software and content to be more efficient, integrated and productive.

Make your presentations life-like

Help customers visualize a new space with accurate detail on manufacturer products and room design with amazing photo-realistic renderings featuring full lighting effects.

Increase accuracy

Improve precision by entering exact placement values. Finish plans faster and ensure they are correct with instant feedback on design issues, thanks to built-in NKBA rules, guidelines and design assistants.

Save time

Use time-saving drawing and positioning tools for a quick layout. Plus, automatically produce bills of materials and estimates from your design and place your orders electronically using 2020 Live Order.



What is 2020 Design?

2020 Design is the industry-leading, easy-to-use CAD (computer-aided design) software that lets you easily design, plan and visualize kitchens and baths using thousands of flexible products from manufacturer catalogs and stunning 3D renderings.

This feature-rich design software brings realism, speed and accuracy to space-planning, allowing designers to retrieve data with one click. The dynamic functionality of 2020 Design helps you guide customers through the design process, clearly communicating design ideas in floor-plan or elevation views with 2D/3D shapes, and transforming customer wish-lists into reality.

How 2020 Design is Helping You

- Ensure accurate quotes with downloaded product and price updates.
- Select cabinets, appliances, accessories and more, from hundreds of industry manufacturers' electronic catalogs.
- Ensure design compliance with product specifications using built-in NKBA verification capabilities.
- Increase productivity for designers in their day-to-day work with time-saving features.
- Submit orders electronically to multiple manufacturers simultaneously and tracker orders in real time with 2020 Live Order.

Catalogs and Content in 2020 Design

2020 currently provides hundreds of manufacturer catalogs for 2020 Design on 2020.net, and many hundreds more are available in the kitchen and bath ecosystem by manufacturers directly. These catalogs deliver an unprecedented opportunity for designers to specify and visualize designs with real products. Make it easy for consumers to quickly decide on products and shorten the sales cycle by clearly communicating design ideas and transforming customer wish-lists into reality with 2020 Design 3D rendering capabilities.

Catalog Content

Here is a sampling of catalog content available to you in 2020 Design:

dacor

Electrolux



HÄFELE

KitchenAid®

THE BOLD LOOK OF
KOHLER

Miele

sensio®
innovate. create. illuminate.

SUBZERO

WOLF

U-LINE

Wellborn CLOSETS™
Cabinetry for Every Room.

NEW

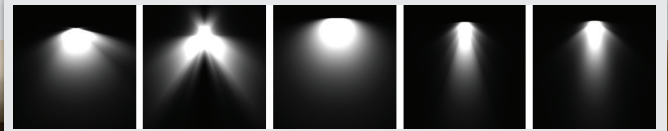
Catalog & Content Updates

Over 100 new moldings, toe kicks and corbels and three new wizards—door and window wizard, cabinet door wizard and custom material wizard—give you more flexibility and realism in your designs.

NEW

Physical Light Properties and True IES Profiles

With the new Physical Light Properties and support for thirty Illuminating Engineering Society (IES) profiles, you can specify parameters, including casting, angles, shadows and wattage, to more realistically represent lights.



Examples of IES light profiles.



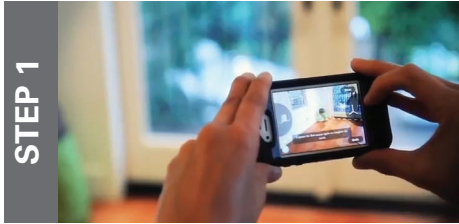
Produce renderings fast and with incredible photo-realism. 2020 Design balances quality, performance, and memory consumption and takes full advantage of the newest graphic card capabilities. Enjoy improved lighting effects, better smoothing for rounded shapes, realistic textures and more!

Photo-Realistic Renderings

Quickly add task and accent lights to your designs. Place lights over and under wall cabinets, inside wall cabinets and on toe kicks and show your clients how energy saving LED lighting can really enhance a space. Accurately estimate lighting costs and place orders electronically directly from the manufacturer.

Lighting Wizard

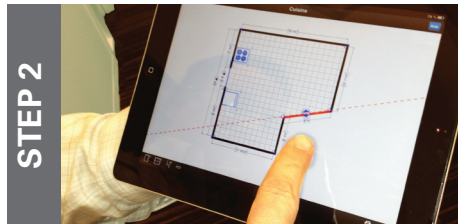
Sensopia MagicPlan App Integration



STEP 1

Measure & Create Plans

Create a floor plan by standing in the center of a room and snapping photos of its corners. MagicPlan directs the focus with gridlines and orange cones, making it simple to map a room, even when some corners are hidden. Add windows, openings and doors.



STEP 2

Provide an Improved Design Experience

With a swipe of your finger, create scenarios and experiment with layouts while you're with your clients - saving time for you and your clients while making the whole design experience more enjoyable.



STEP 3

Import Plans to 2020 Design

Import your plans from MagicPlan into 2020 Design and eliminate up-front drawing time. Now, you can use 2020 Design to add 3D elements and make photorealistic representations of your client's dream kitchen or bathroom.

360° Panoramic Views

Provide an Immersive 3D Experience

Provide your clients with an immersive 3D experience that makes them feel like they are right inside the new design—while they're sitting at home. Simply email a panoramic view link to your clients and they can open it in web browsers or on mobile devices and share with friends and family.

Scan these images to try it or see an extensive library of examples at 2020spaces.com/2020products/panorama/



Scan to try 360° view!



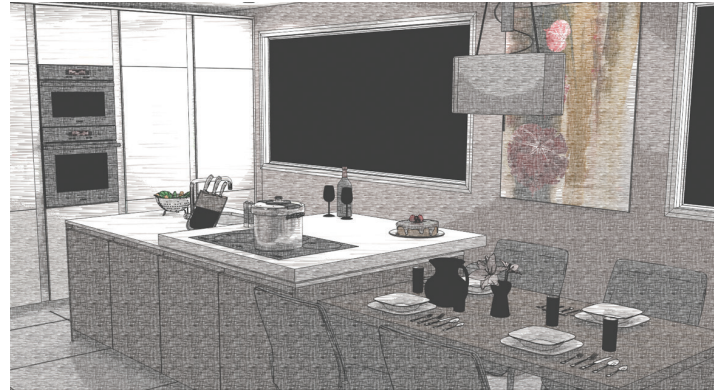
Scan to try 360° view!

NKBA 2015 Design Competition Award Winner

NEW

Rendering Sketch Mode

Render your designs in a format that resembles a hand-drawn sketch. This mode renders designs very quickly and provides another way to present ideas to clients.



NEW

Sherwin Williams® Paint Textures and Finishes

Over 3500 new paint textures and 5 different finishes have been added to 2020 Design. Match paint colors in 2020 Design to the actual manufacturer colors at retail locations and provide clients with truly realistic designs.

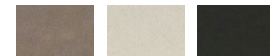


NEW

Wilsonart® Countertop Textures

Over 1500 new releases of Wilsonart® abstract, solid, stone and woodgrain countertop textures.

Wilsonart® Abstract



Wilsonart® Solids



Wilsonart® Stones

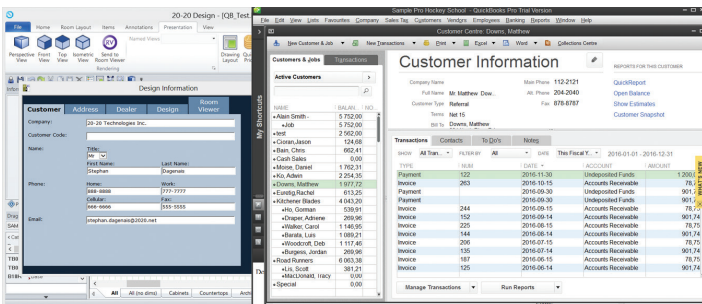


Wilsonart® Woodgrains



QuickBooks Integration

2020 Design customer profile and information can be automatically synced with Quickbooks to easily generate accurate invoices for clients' designs.



Content Available in 2020 Design Editions

	COMPLETE	SELECT	ESSENTIALS	EDUCATIONAL
Generic catalogs	✓	✓	✓	✓
Access to ONE manufacturer's catalog	✓	✓	●	✗
Access to ALL manufacturers' catalogs	✓	●	●	✗

✓ Available ● Available at additional cost ✗ Not available

Features

NEW Physical Light Properties and support for IES lighting profiles

With the new Physical Light Properties and support for thirty Illuminating Engineering Society (IES) profiles, you can specify parameters, including casting, angles, shadows and wattage, to more realistically represent lights.

NEW Rendering sketch mode

Render your designs in a format that resembles a hand-drawn sketch. This mode renders designs very quickly and provides another way to present ideas to clients.

NEW Catalog and content updates

Over 100 new moldings, toe kicks and corbels and three new wizards—door and window wizard, cabinet door wizard and custom material wizard—give you more flexibility and realism in your designs.

NEW Over 1500 new Wilsonart® countertop textures

New releases of Wilsonart® abstract, solid, stone and woodgrain countertop textures.

Exposure

Easily add light to your designs where either naturally occurring or placed lighting does not provide enough lighting for presentation purposes.

Lighting wizard

Quickly add task and accent lights to your designs. Place lights over and under wall cabinets, inside wall cabinets and on toe kicks. and show your clients how energy-saving LED lighting can enhance a space. Calculate lighting costs and place orders electronically directly from the manufacturer.

360° panoramic view

Save a panoramic view for any design and provide your clients with an immersive 3D experience that makes them feel like they are right inside the new design for their kitchen or bathroom. Email a link to your clients, and they can open it in web browsers or on mobile devices.

More photo-realistic renderings

Produce renderings of your designs in much less time and with dramatically improved photo-realism. Renderings now offer improved lighting effects, better smoothing for rounded shapes, realistic textures and more—all with less memory consumption.

Import features

You can import 3D models from SketchUp or AutoCAD® and add them to your design or to your Idea Center.

Sensopia MagicPlan app integration

With the integration of the Sensopia MagicPlan application, we've improved front end workflow so that you can easily measure and create initial floor plans with your iPhone®, iPad® or Android device. Import floor plans into 2020 Design to begin your design process.

QuickBooks integration

2020 Design customer profile and information can be automatically synced with QuickBooks, a market-leading small business accounting software. Dealers, designers and remodelers can easily generate accurate invoices for their clients' designs.

Intuitive user interface

Work in a more natural and intuitive way using the modern, customizable user interface. The toolbar allows you to easily add or remove functions according to your work preferences.

Item browser for ideas

Save all your designs or just your favorite elements in the Idea Center Libraries. Browse for your ideas in the same way you browse for items in the catalogs. Then import them simply and easily using the drag and drop feature and get a preview of your new idea.

Reporting

Access reports easily with one click using improved Active Reports reporting technology that also supports multiple languages.

2020 Live Order integration

Use 2020 Live Order, a web order entry solution that allows you to submit orders electronically to multiple manufacturers simultaneously and track orders in real time.

Drawing layouts

Prepare convincing, attractive presentations and proposals. Extend your drawing layouts across several pages or place a viewable item, list, rendering, or floor plan in any available layout window.

NKBA™ Design Assistants

The Design Assistants are rule-driven tools that can notify you when your designs are not compliant with the design conventions established by the industry. If one or more rules are broken during the design process, you can choose to receive warnings and suggestions in real-time, during the design process and/or when the design is completed.

2020

About 2020

2020 helps professional designers, retailers and manufacturers in the interior design and furniture industries capture ideas, inspire innovation and streamline processes. By providing end-to-end solutions and the world's largest collection of manufacturers' catalogs, 2020 provides businesses with the software and content to be more efficient, integrated and productive.



Professional

Enabling professional designers to create kitchens, bathrooms, closets and commercial offices which look as stunning on the screen as they will in reality.



Manufacturing

Providing furniture and cabinet manufacturers a complete manufacturing operations management capability developed to meet their needs.



Retail

Empowering interior home improvement retailers to inspire the imagination of their customers and accelerate decision making.



For system requirements, please visit 2020spaces.com/support

TF: +1.866.698.2020 T: +1.514.332.4110 F: +1.514.334.6043 E: sales@2020spaces.com

2020spaces.com

2020 Headquarters

20-20 Technologies, Inc.
400 Armand-Frappier Blvd.
Suite 2020
Laval, QC Canada H7V 4B4

Worldwide Offices

Americas
Laval, QC, Canada
Cary, NC, USA
Foxboro, MA, USA
Grand Rapids, MI, USA
São Paulo, Brazil

Europe
Wiener Neustadt, Austria
Mouans-Sartoux, France
Osnabrück, Germany
Ashford, UK
Bolton, UK

Asia-Pacific
Guangzhou, China
Shanghai, China
Pune, India