

2020 Fusion

What's New in Version 4?

(Up to and including Version 4.5)



Introduction

Welcome to 2020 Fusion Version 4!

Version 4 continues in the tradition of delivering 2020 Fusion customers a broad range of new features and functional enhancements, combined with a strong focus on making the overall design process quicker and more intuitive.

Particular emphasis has been placed on the areas of automatic dimensioning and annotation, in which changes have been made to make these processes not only more effective than before, but also highly flexible – allowing auto-dimensions and auto-annotations to operate without compromising any manual changes made by the end user during the course of the design.

Additional attention has been applied to the numeric annotation system, now not only operating with an improved logic, but also now capable of providing fully synchronised numeric annotation across the plan, elevation, item list and report views.

Following on from Version 3, further enhancements have also been made in the areas of lighting, rendering and printing both in terms of specific feature development, general optimisation and memory management.

Version 4 also responds to customer requirements for additional export types, with it now being possible to export a design to Trimble SketchUp, IFC (BIM) and other formats. Moreover, the export process itself now offers an improved user interface, with the old 'wizard' being replaced by a dedicated 'Export' backstage view.

Many additional preferences have also been introduced across a range of areas including dimensioning, annotation, printing, predefined views and autofeatures. This gives designers even greater flexibility in configuring the application to operate in the best way possible for their working environment.

Designers will benefit from several enhancements to the application's user interface and user experience, including real-time 'status bar' assistance for specific functions, a new notification method for clashing and invalid style options, as well as a new splash screen and application icons.

Details of the new features and enhanced functionality in 2020 Fusion Version 4 are listed under a series of general headings, as follows.

Customers will also be able to take advantage of 2020 Fusion's '360° Panorama' feature, which allows them to publish and share panoramic views of a design with their customers.

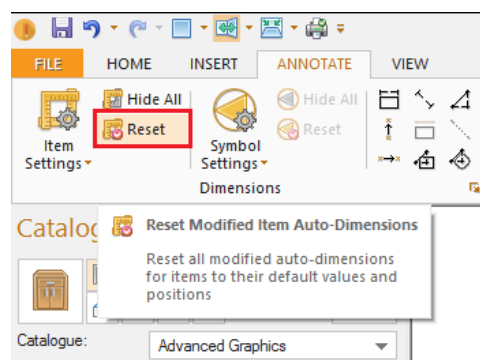
Finally, 2020 presents '2020 Cloud' - the industry's first online solution for accessing the latest manufacturers' catalogues - available directly from 2020 Fusion.

Dimensioning

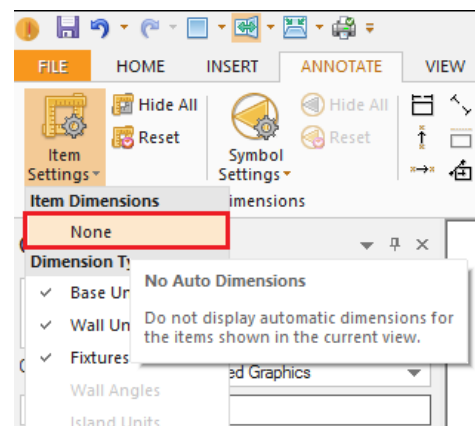
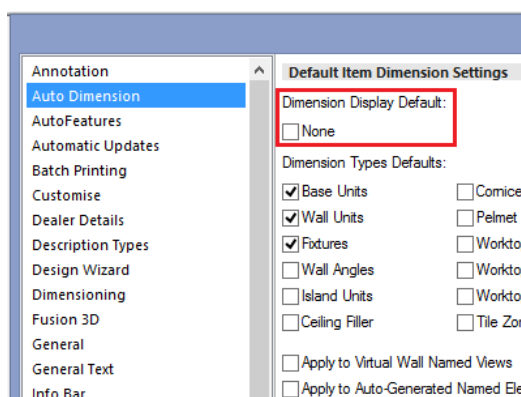
New Rules for Auto-Dimension Rails/Show-Hide Dimension Rails

2020 Fusion now provides a new form of 'auto-dimensioning' functionality for both item and installation symbol dimensions. This powerful enhancement now gives the designer more control than ever in terms of the application and manipulation of auto-dimensions.

When activated, auto-dimensions will not only operate in 'real-time' - i.e. they will automatically update as products are added, removed or modified – but 2020 Fusion will also retain any changes made by the designer in the meantime to individual auto-dimensions, such as deleting, repositioning or modifying. Only by clicking a new 'Reset' button (one for each of item and installation symbol dimensioning respectively), will the 'default' auto-dimensions be reapplied based upon the current design's dimension rail settings.

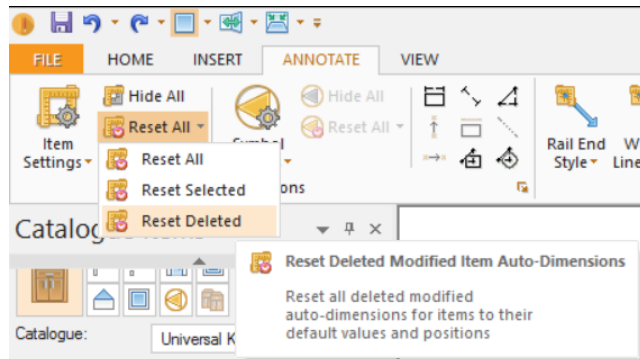


A preference has also been added, with user interface, allowing the end user to define whether dimensions are set to be displayed by default for new designs or not, thereby making it consistent with existing preference behaviour for installation symbols:



Ability to Reset Selected & Deleted Auto-Dimension Rails

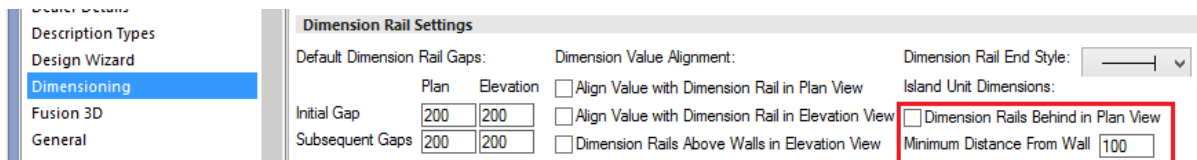
2020 Fusion's 'reset' functionality for auto-dimension rails has been further enhanced, by allowing the end user to be more selective with the modified auto-dimensions that they wish to reset. It will now be possible to 'Reset All', 'Reset Selected', or 'Reset Deleted' as separate options.



Enhancements to Island Unit Dimensioning

Two new preferences have been added to 2020 Fusion, allowing an end user to define:

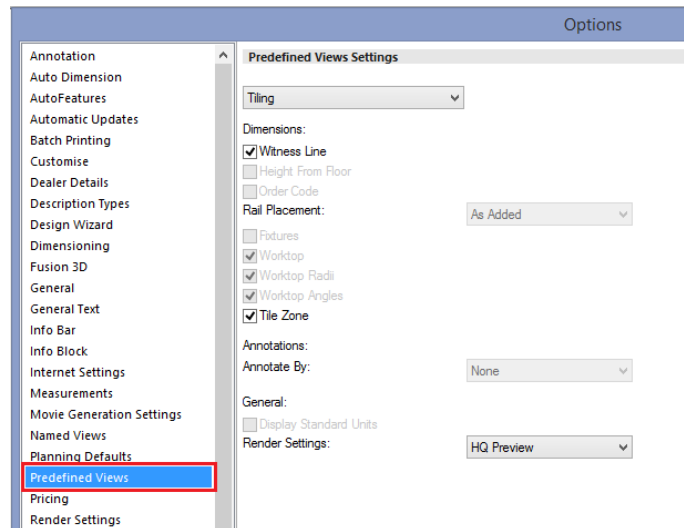
- The minimum distance from a wall at which a unit will then be considered to be subject to island dimensioning rules, as opposed to wall dimensioning rules.
- Whether dimension rails for an 'island unit' are displayed in front of the unit or behind it.
 - o *Note: this functionality is subject to additional catalogue configuration.*



Predefined Settings For Print Views/Named View Enhancements

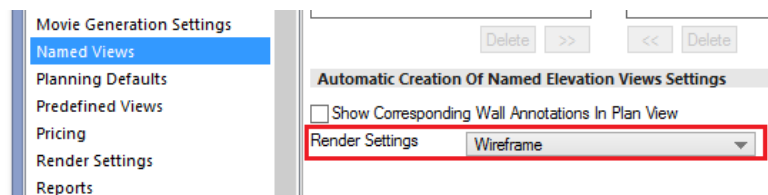
The following collection of changes has been implemented as part of this requirement:

- When viewing predefined views in the 'Print' backstage view, 2020 Fusion will no longer show 'gaps' where dimension rails not relevant to the predefined view would have been shown in the standard view. Such gaps will now be 'closed up', giving a neater overall impression both in the preview and on the printed page.
- A new 'Predefined Views' preference section has been added in respect of the worktop, installation symbol and tiling predefined views - allowing an end user to define dimensioning, annotation, standard unit visibility and render type settings for each of these views, as appropriate.

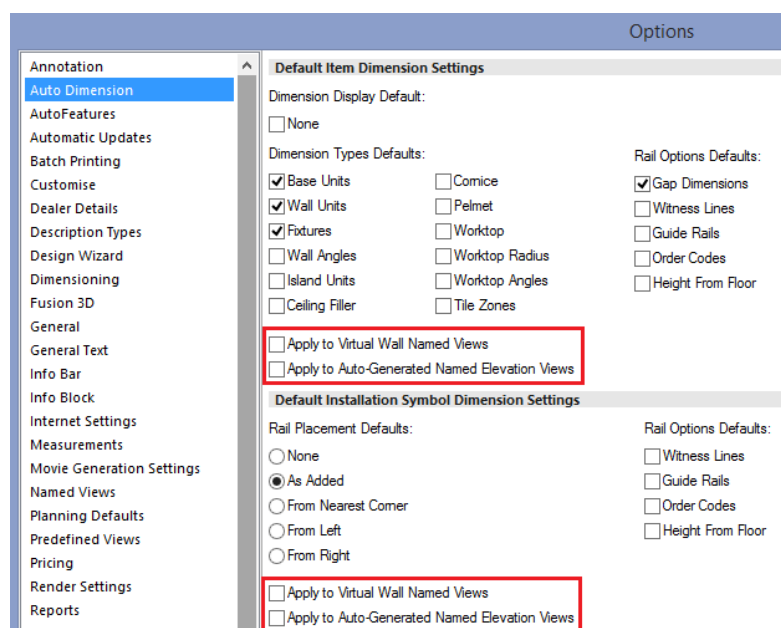


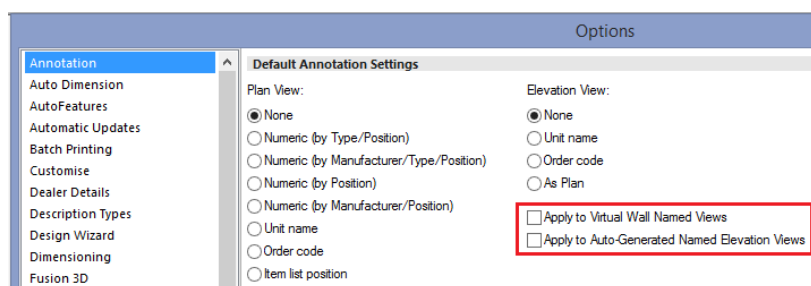
- The creation of auto-generated named views for elevation views is no longer a manually initiated process. Such views will now be automatically (re)created every time a wall is added or deleted. New preferences have also been added in respect of this feature, allowing a user to determine:

- o The default render for such views.



- o Whether default item auto-dimensions, default installation auto-dimensions and default auto-annotations settings for such views are inherited from the standard view settings or not.
- New preferences have also been added in respect of this feature for virtual walls, allowing a user to define:
 - o Whether default item auto-dimensions, default installation auto-dimensions and default auto-annotations settings for such views are inherited from the standard view settings.

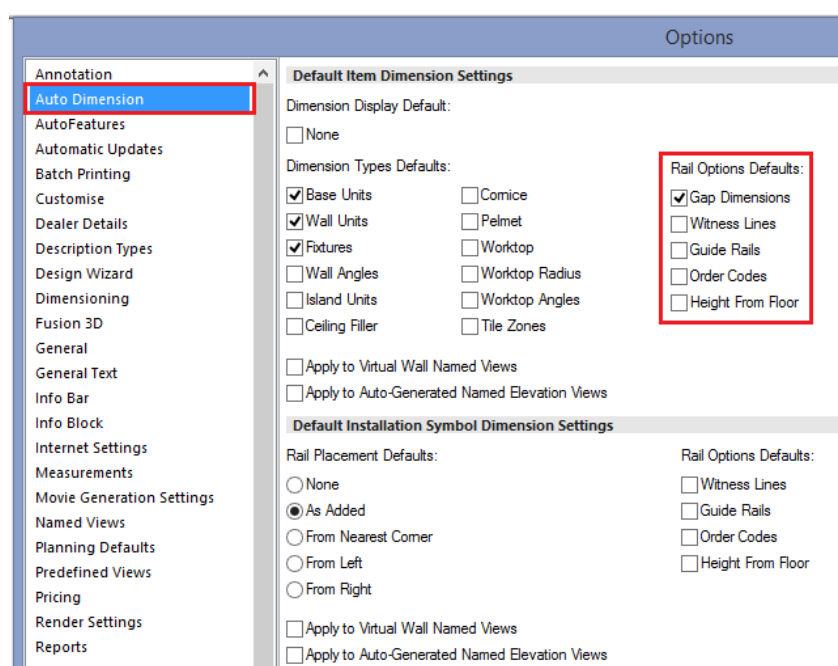




This new functionality is complementary to the changes made as part of *New Rules for Auto-Dimension Rails/Show-Hide Dimension Rails*, with any modifications made to automatic dimensions also being taken into account.

Ability to Set Defaults for Item Settings Rail Options

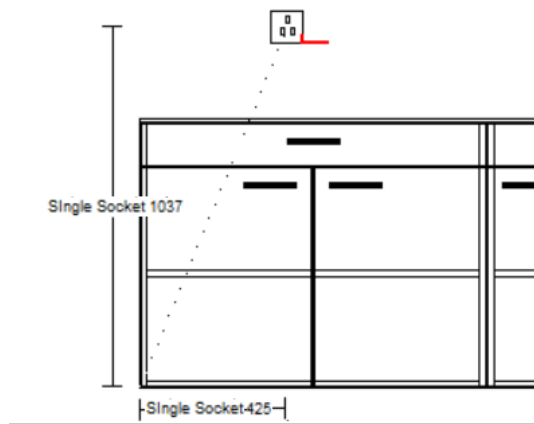
The default state for the rail options used for item dimensioning can now be defined by an end user in the 'Auto Dimension' preference section, thereby making the functionality for defining item dimensioning defaults consistent with that for installation symbol dimensioning. When changed, the defaults will be applied to all new designs upon creation.



Centre Point Dimensions to Show Order Code and Height from Floor

2020 Fusion currently provides a mechanism whereby it is possible to create a manual dimension from the centre point of an item in a plan or elevation view to a corner point of an item in the same view. It is also possible to define whether dimensions are to display order code and/or height from floor information as part of the same dimension rail.

Previously order code and/or height from floor information could only be displayed on dimensions that connect the centre point of an item or installation symbol with the corner point of itself or with a fixture (e.g. with a wall, door, or window); this behaviour has now been extended so that order code and/or height from floor information can be displayed whenever a centre point dimension is created.



Ability to Disable Order Codes/Height From Floor on Vertical Dimension Lines (Elevation View)

A hidden preference has been added to 2020 Fusion which allows an item's order code or height from floor to only be displayed on the horizontal dimension rail, as opposed to both the horizontal and the vertical dimension rail. The default behaviour remains to show the values on both rails:

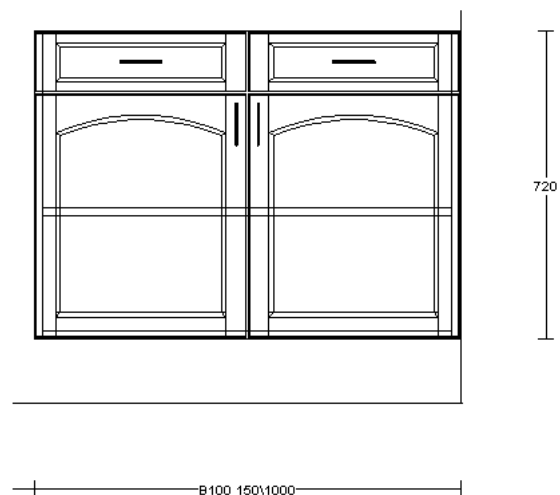
[fnRoom]

HideOrderCodeHeightFromFloorForVerticalDimsInElevationView = "0" or "1"

Preference Disabled



Preference Enabled



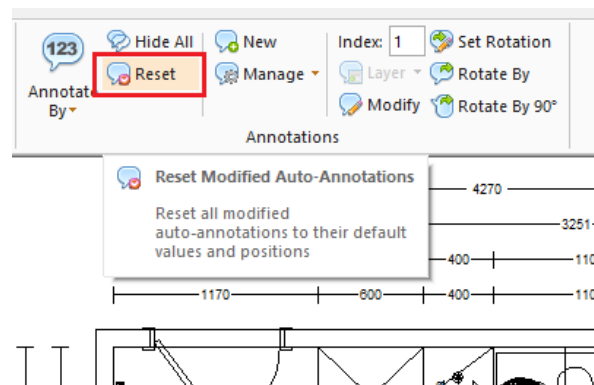
Annotation

New Rules For Auto-Annotations

Consistent with the parallel development undertaken for auto-dimensioning, 2020 Fusion now provides a new form of 'auto-annotations' functionality.

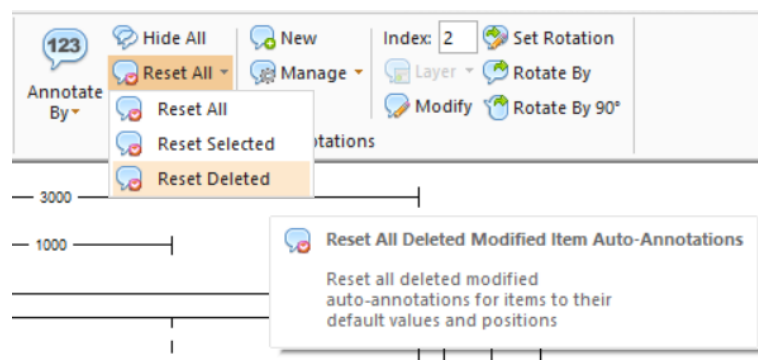
When activated, auto-annotations will not only operate in 'real-time' - i.e. they will automatically update as products are added, removed or modified – but 2020 Fusion will also retain any changes made by the designer to individual auto-annotations in the meantime - such as deleting, repositioning or modifying.

Only by clicking the new 'Reset' button, will the 'default' auto-annotations be reapplied based upon the current design settings.



Ability to Reset Selected Modified Auto-Annotations

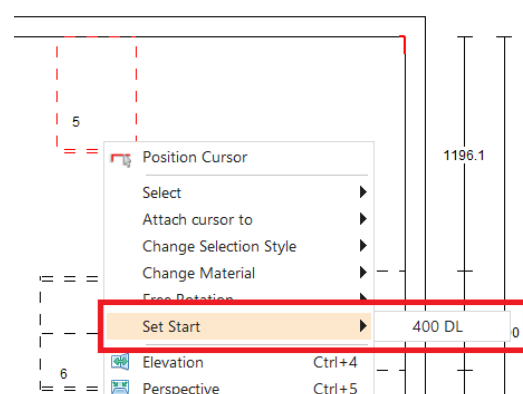
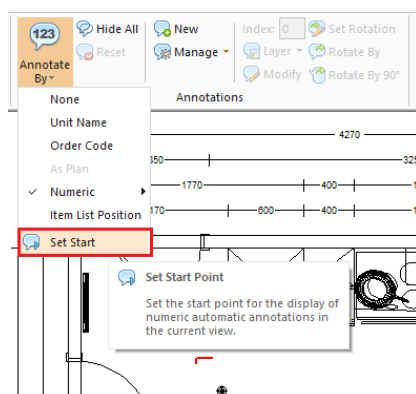
The 'reset' auto-annotations functionality is further enhanced in version 4.3, by allowing the end user to be more selective with the modified auto-annotations that they wish to reset. It will now also be possible to 'Reset All', 'Reset Selected', or 'Reset Deleted' as separate options.



Automatic Annotation: User-Defined 'Set Start' Point Enhancements

Setting the 'Start Point' for numeric annotation can now be achieved more quickly and easily, with the option now being relocated to the top-level of the 'Annotate By' drop down. In addition, the option is now also accessible via the context sensitive ('right-click') menu in the design view.

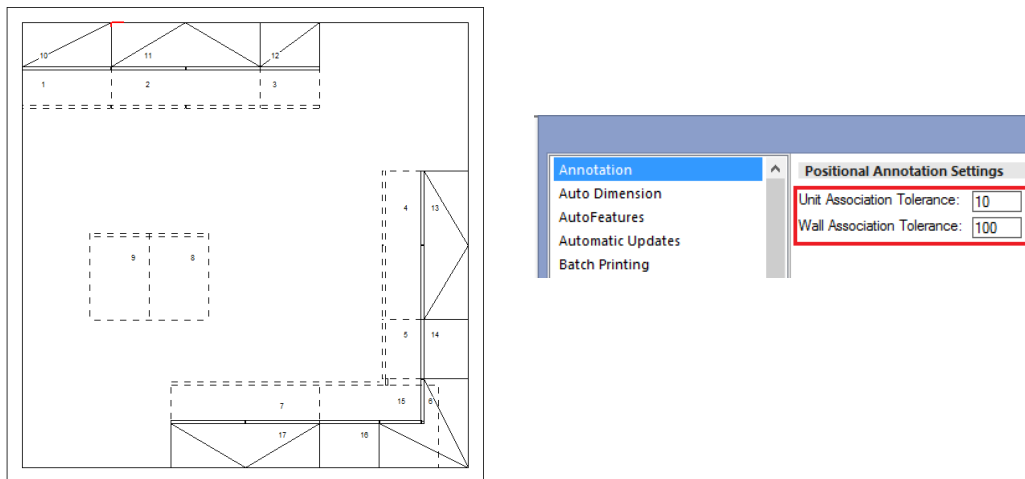
Also, the actual method of calculation has been optimised, with the start point being calculated from either the 'click point' (if no unit is selected), or the selection's origin (if a unit is selected).



Automatic Annotation - Positional Rule Changes

2020 Fusion's mechanism for determining the order sequence of numeric auto-annotations has been redesigned in order to deliver a more logical result within a design. Specifically, the new mechanism now also takes into account the grouping of units within the design, with the priority given to units adjacent to a wall.

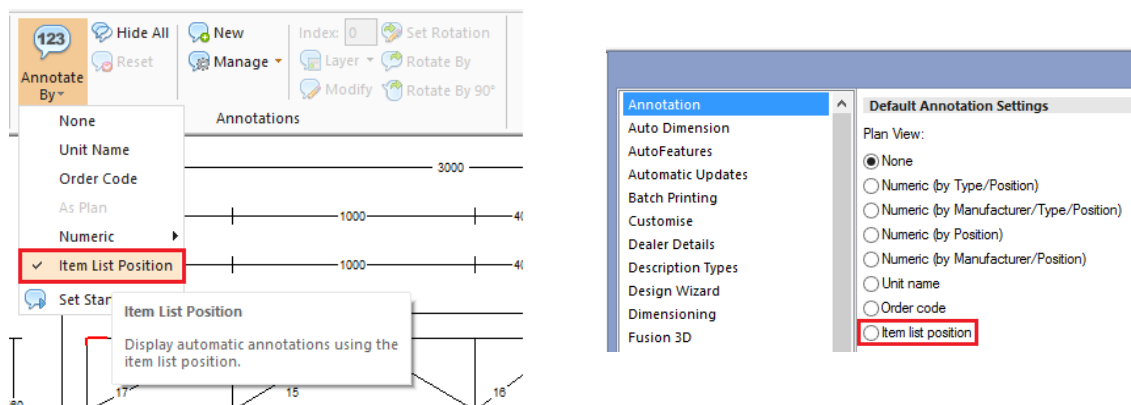
New user accessible preferences have also been added, to allow the end user to control the respective tolerances relating to unit and wall proximity.



Annotation: New Annotation type "Item List Position"

Designers require the ability to present plans to their customers using consistent points of reference across multiple views. In the case of auto-annotation, Fusion now offers the option for plan view annotation to automatically follow whichever annotation option has been defined in the 'Item List' view.

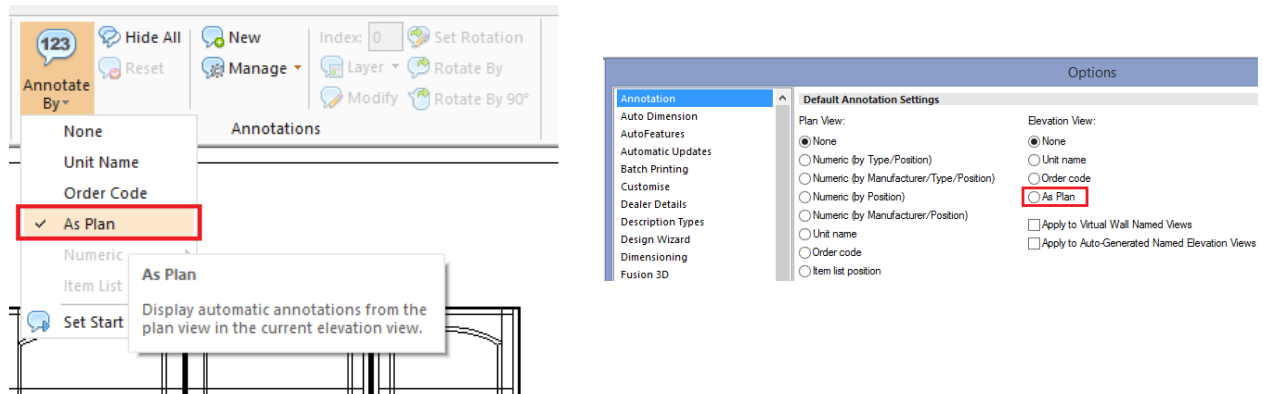
In addition, the existing preferences have been extended to allow 'Item List Position' to be set as the default auto-annotation option to be used for plan views.



Extend (Automatic) As Plan Annotation to Elevation Views

Also in keeping with the requirement for consistency across multiple views, it is now possible align the automatic annotation method used in elevation with that of the plan view. As a result, elevation (wall) views can be set to use the same annotation option as has been already chosen for the plan view by choosing the 'As Plan' option.

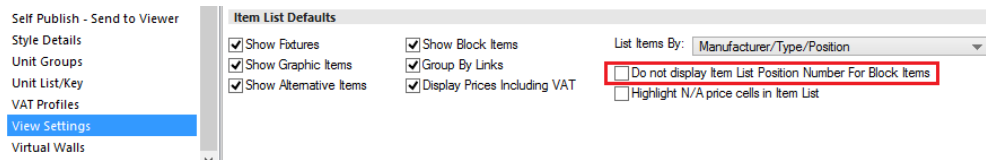
In addition, the existing preferences have been extended to allow 'As Plan' to be set as the default auto-annotation option to be used for elevation (wall) views.



Item List: Change to Item List Position Display for Blocks

This change is of benefit to user who use catalogues that have been configured for Block Evaluation. Previously, all block items would have a position number in the Item List view (and will also show a sub-position number if 'group by links' is enabled).

With this feature, it is now possible for position numbers for block items to not be shown, via an end-user accessible preference. When the preference is checked, item list numbers will only be allocated to the items actually present in the design.



Moreover, the effect of this preference setting will also be reflected in reports and integration solutions. In addition, when combined with the functionality of *Annotation: New Annotation type "Item List Position"*, it will be possible for the desired result to be reflected in Plan and Elevation views as well.

Preference Disabled

Pos. Number	As Added	Item Name	Handing	Price
1	30	B167652E1012		£ 2,730.00
1.1	5	US40	Left	£ 319.00
1.2	6	US40	Left	£ 319.00
1.3	7	US40	Left	£ 319.00
1.4	8	US40	Right	£ 319.00
1.5	9	US50	Right	£ 339.00
1.6	10	UE90	Left	£ 611.00
1.7	18	US40	Left	£ 319.00
1.8	19	US40	Left	£ 319.00
1.9	20	US40	Left	£ 319.00
1.10	21	US40	Right	£ 319.00
1.11	22	US50	Right	£ 339.00
1.12	31	U3SA50		-£ 650.00
1.13	32	HUS60		-£ 269.00
1.14	33	UEBD10050	Left	-£ 764.00
1.15	35	GSB60I		-£ 148.00
1.16	36	SPU60	Left	-£ 270.00
1.17	37	US560		-£ 775.00
1.18	38	G123A03	Left	-£ 814.00

Preference Enabled

Pos. Number	As Added	Item Name	Handing	Price
	30	B167652E1012		£ 2,730.00
1	5	US40	Left	£ 319.00
2	6	US40	Left	£ 319.00
3	7	US40	Left	£ 319.00
4	8	US40	Right	£ 319.00
5	9	US50	Right	£ 339.00
6	10	UE90	Left	£ 611.00
7	18	US40	Left	£ 319.00
8	19	US40	Left	£ 319.00
9	20	US40	Left	£ 319.00
10	21	US40	Right	£ 319.00
11	22	US50	Right	£ 339.00
	31	U3SA50		-£ 650.00
	32	HUS60		-£ 269.00
	33	UEBD10050	Left	-£ 764.00
	35	GSB60I		-£ 148.00
	36	SPU60	Left	-£ 270.00
	37	US560		-£ 775.00
	38	G123A03	Left	-£ 814.00

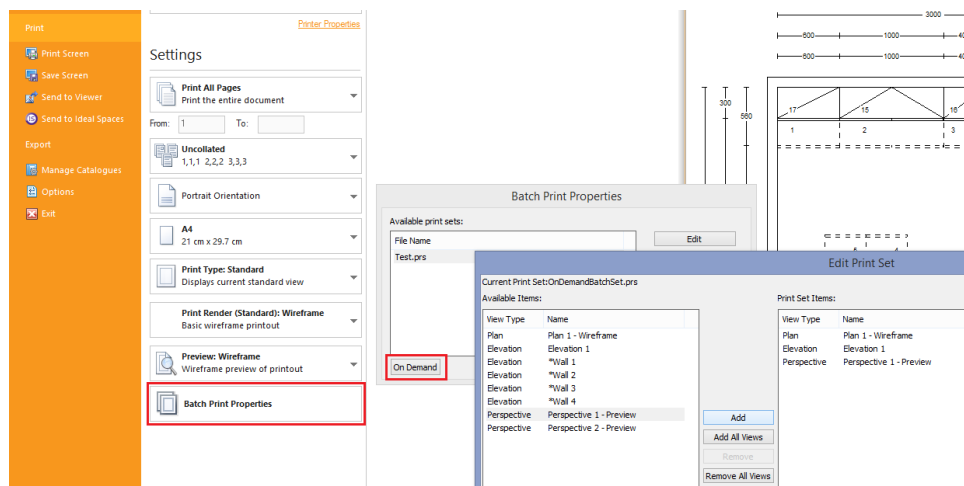
Printing & Export

On Demand Batch Printing

Previously, all Batch Print Sets had to be predefined by the designer within the corresponding area of Fusion's 'Options' before they could be selected and printed in the 'Print' backstage view.

Now, new functionality makes it possible to create a temporary batch print set 'on demand' at the point of printing within the Print backstage view. The on demand batch print set will remain available to the end user for the duration of the specific design being open and then will be discarded when the design is closed.

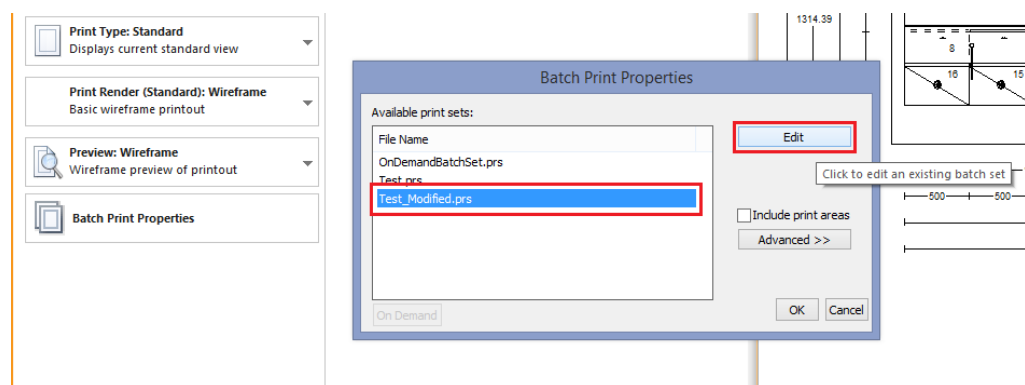
This functionality is subject to the ability to print in general (enabled for both 2020 Fusion and 2020 Fusion Foundation) and to use batch printing in particular (available to 2020 Fusion users only).



On Demand Batch Printing: Ability to Edit 'Predefined' Batch Sets 'On Demand'

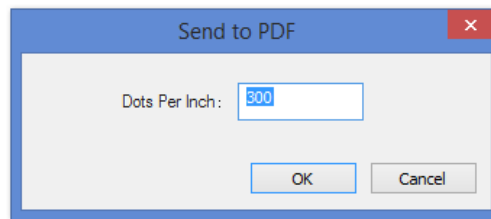
The on-demand batch printing functionality is further enhanced by also providing the ability to create a temporarily modified variant of a predefined batch set via an 'Edit' option.

As is the case for on demand batch printing, the edited print set will remain available to the designer for the duration of the specific plan being open and then will be discarded when the design is closed.



Print to PDF: Ability to Define DPI

When creating a PDF of a 2020 Fusion design, it is now possible to define the number of dots per inch for the generated image (via 'Printer Properties'), thereby making this method consistent with the ability to define the DPI setting for a PDF when using 2020 Fusion's Export backstage view.

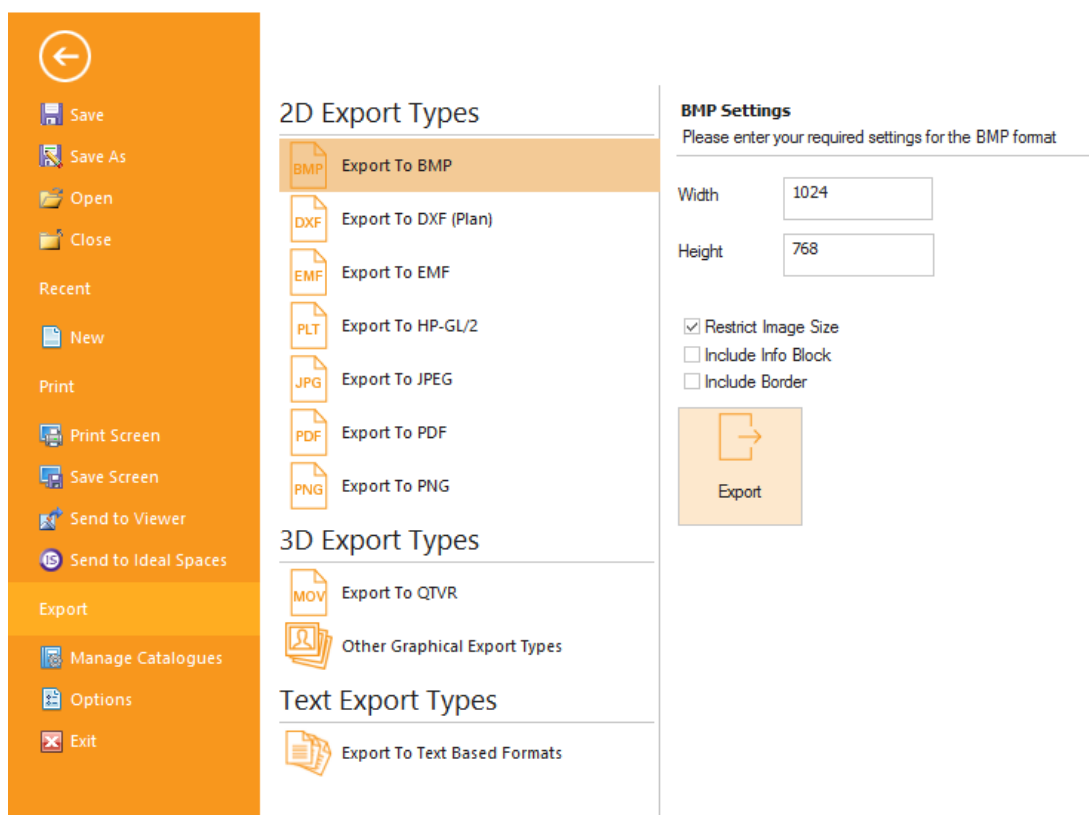


Export Backstage View

2020 Fusion's 'Export' mechanism, previously operating as a wizard, is now presented in the form of a backstage view. The new layout presents the various formats available under three distinct headings: *2D Export Types*, *3D Export Types* and *Text Export Types*.

All of the existing export formats continue to be available (subject to the application edition in use), along with those new formats referenced in 'Enhancements to Geometry Exports'. In addition, the following export formats – previously accessible to designers via other means – can now also be chosen from the Export backstage view:

- .XML
- .PDF
- .TXT (Item list export - now possible from any view)



Additional Geometry Export Formats

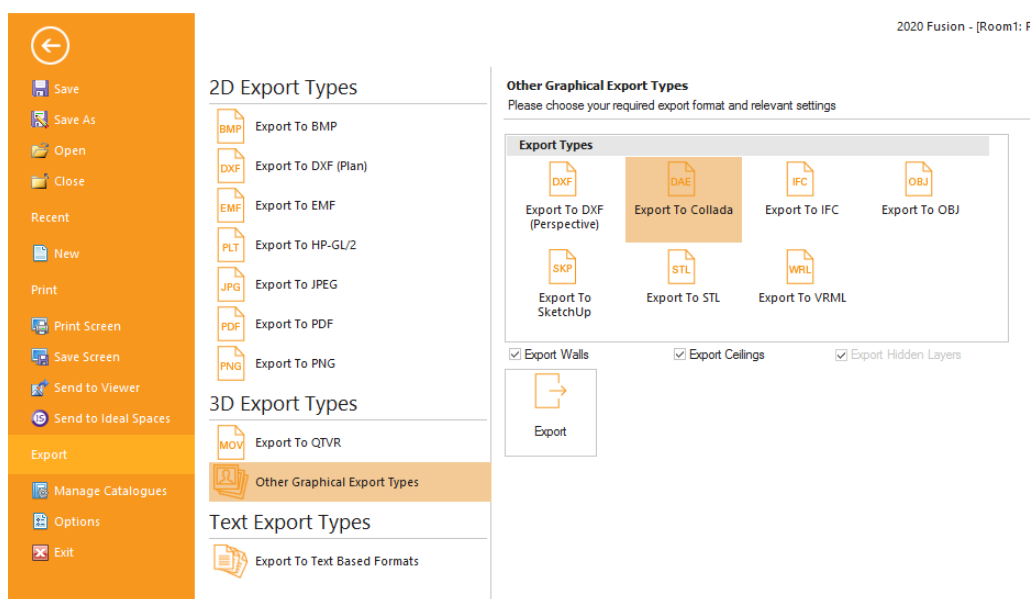
A number of new formats have been added to Fusion's 'Export' backstage view. In some cases, these are dependent upon the edition of 2020 Fusion purchased. Details of the formats and dependencies are as follows:

Available Universally:

- Plan View DXF (.dxf)

Edition Dependent:

- Collada (.dae)
- Wavefront (.obj)
- Stereolithography (.stl)
- SketchUp (.skp)



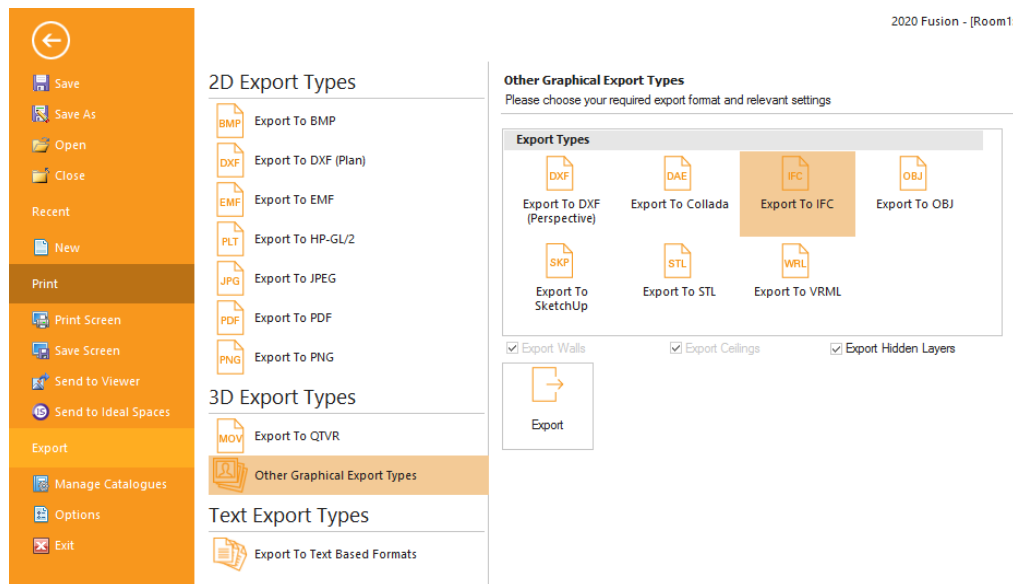
NEW in v4.5! Trimble SketchUp 2016 Support

In line with Trimble's release of SketchUp 2016, 2020 Fusion now supports the import of models created using this version of SketchUp. In addition, 2020 Fusion's 'Export to SketchUp' has been upgraded to export to this latest edition.

IFC Export - Building Information Modelling

It will now be possible for a designer to output a 2020 Fusion design in the format required to be compliant with the Building Information Modelling (BIM) standard via the Export backstage view. Specifically, the format being followed is the IFC2x3 (Feb2006) revision.

The resulting export file will contain both customer information and details of the 2020 Fusion design items which, when opened in an IFC viewer, will provide both a graphical representation and details of the individual items in list form.



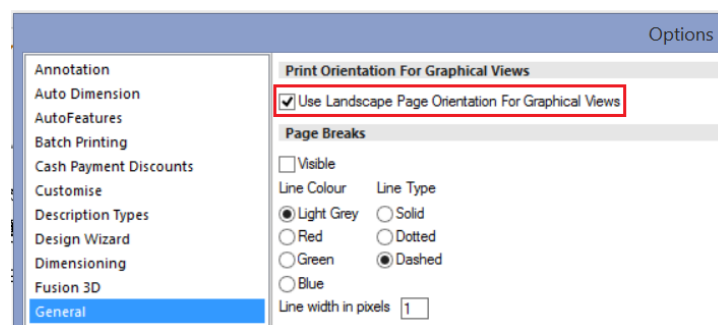
Please note that the availability of this export format is edition dependent and may not be available to all users.

Printing: Landscape orientation to be offered by default for relevant views

A new preference, with user interface, has been added to 2020 Fusion which will apply a specific default page orientation, dependent upon the type of view being considered.

If the preference is checked (in the 'General' section of Fusion's 'Options'), then landscape orientation will be offered by default for all graphical views and portrait orientation will be offered by default for all non-graphical views.

This will take effect when printing, applying print areas, creating batch print sets, as well as when exporting a design to EMF or HP-GL/2 formats.

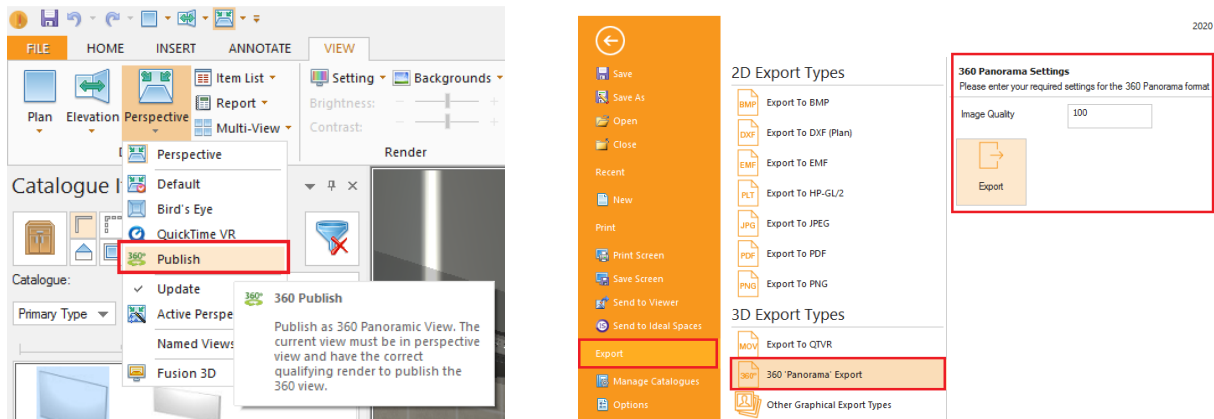


Note: This preference will be enabled as standard upon the installation of 2020 Fusion v4.

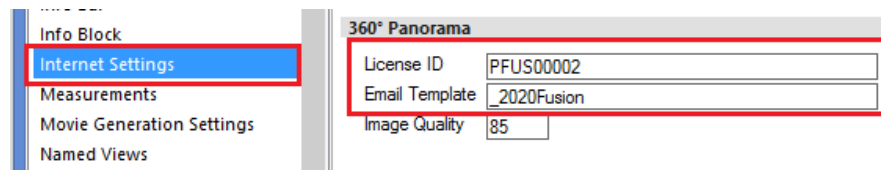
360 Degree 'Panorama' Export

The 360 Degree Panorama Export feature delivers not only new application functionality but also delivers an added service to all 2020 Fusion customers.

The feature itself will allow a designer to publish a 360 degree panorama from a fixed perspective view point, using any 'standard' Fusion render. This can be achieved either from the View tab, or whilst in the Export backstage view:



The panorama will then be sent to and stored at a dedicated Web Service location hosted by 2020 Technologies based upon settings defined in the preferences:



Once published, the designer and customer will then receive an email containing a link to the 360 degree panorama, which can then be opened using their default web browser. Easy to use built in navigation and zooming tools allow the design to be viewed in all directions and to get up close to any areas of special interest. Panoramas can even be viewed on a tablet or smartphone, taking full advantage of the device's gyroscopic functionality.

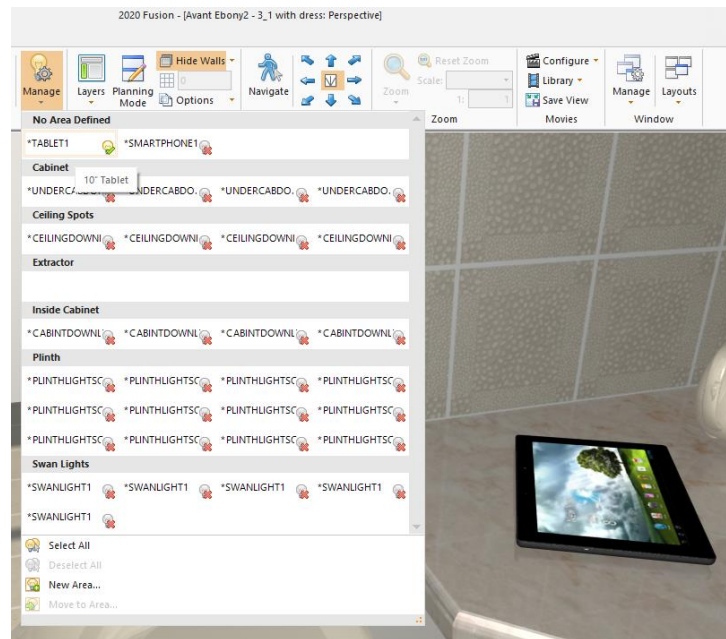


Lighting & Rendering

Manage Additional Items Using User-Added Lighting Interface

2020 Fusion introduced the ability to manage and manipulate user-added lights via the View (lighting areas) and the Items (lighting properties) tabs in Version 3.

Version 4 now includes an extension to this functionality, whereby design items that have the potential to emit light (e.g. Smart Phones, Tablets, TV Screens, Monitors, LED displays, etc.) can also be managed via the same interface.

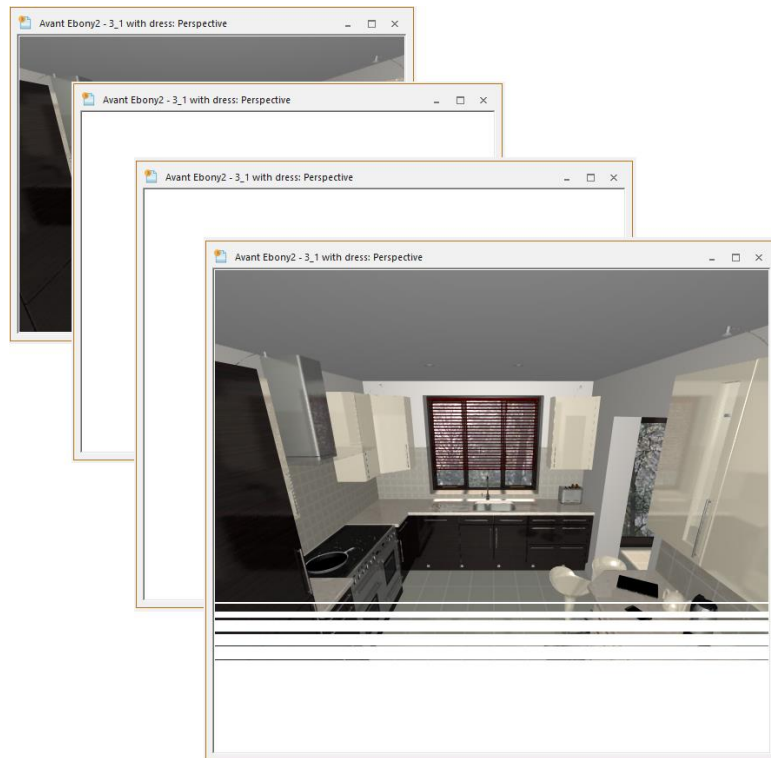


Please note that this functionality requires catalogue configuration in order to function; a number of items in 2020 Fusion's Advanced Graphics catalogue have already been updated to benefit from this new functionality.

Suppress Rendering When Resizing a View

In previous versions of 2020 Fusion, the act of resizing window by clicking onto (and dragging) one of its sides or corners was a troublesome process, as the application would continually attempt to re-render the design whilst doing so. Designers would generally have to switch to a wireframe view in order to resize quickly and accurately.

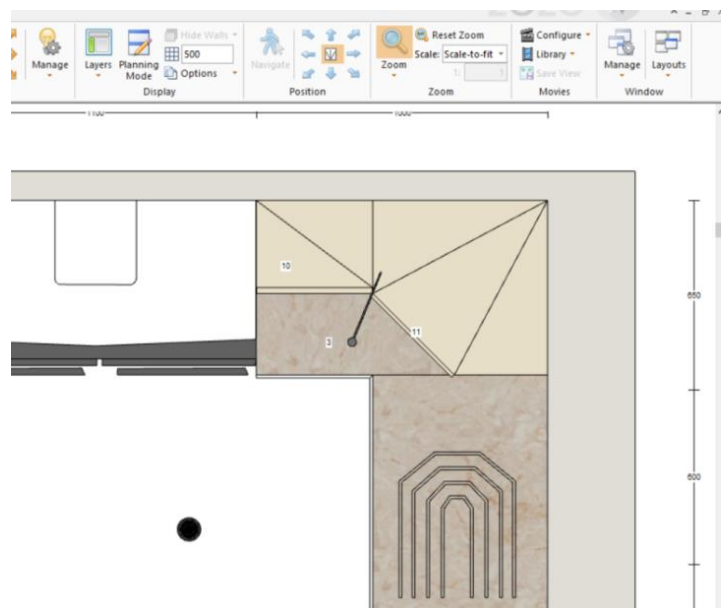
Effective from version 4, rendering is temporarily suppressed whilst resizing a window - with the entire window turning blank (white) – until the mouse is actually released. Upon releasing the mouse, the resized window will re-render using the same render applied prior to resizing.



Retain All Renders When Zooming or Scaling in Plan and Elevation Views

In Version 3 of 2020 Fusion, graphics card based rendering of the White Fill, Colour Fill and Draft renders was introduced. A consequence of this speed improvement was the inability to retain such renders when zooming in Plan or Elevation. In such instances, Fusion would drop down to a wireframe view.

In Version 4 of Fusion, a solution has been implemented to allow designers to benefit both from the speed improvement made in Version 3 and to, once again, be able to zoom in whilst retaining the selected White Fill, Colour Fill and Draft renders.

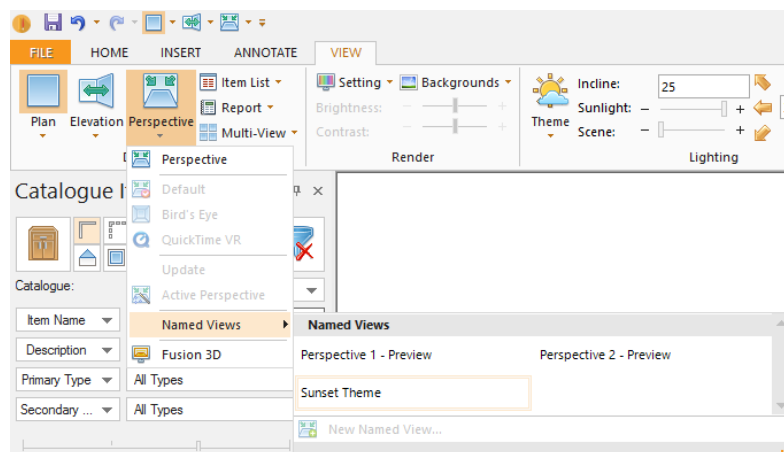


Named Views to Also Consider (Selected) Lighting & Background Settings

Following the implementation of 'sunlight themes', 'background brightness' and 'scene lighting' in Version 3 of Fusion, it was made much easier for a designer to create a visual effect reflecting a particular time of day. Following on from this, Version 4.2 introduces the ability for all of these settings to also be saved to a named view, thereby making it simple for a designer to recall these settings as a whole for existing and new designs.

Specifically, the following lighting settings will now be saved as part of the named view: the external lighting theme, the scene light intensity, the sunlight intensity, the sunlight incline, the sunlight direction and the background brightness. Please note that the settings of 'user-added' lights will not be retained as part of the named view.

Note: This functionality does not extend to auto-generated named elevation views.

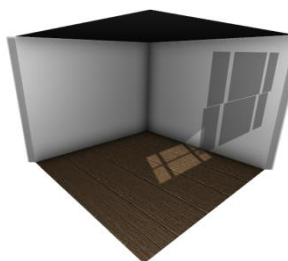


Hide Walls: Glass Elements Within Fixtures To Also Be Hidden

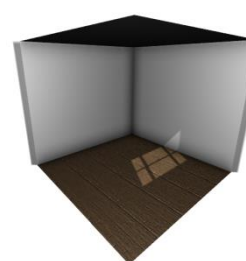
2020 Fusion's 'Hide Walls' functionality has been further improved in order to overcome a previous issue whereby if a wall contains a fixture that includes a glass element, the glass was still shown when 'Hide Walls' is used and the design is viewed from 'outside'.

The solution implemented now allows the effect of the glass in the window or door pane to still be shown, but not show the glass within the window or door itself.

Previous Behaviour



New Behaviour



Edge Removal Tolerance

A new preference has been added to 2020 Fusion which facilitates the simplification of drawings containing complex triangle meshes when viewed in any of the Wireframe, White Fill and Colour Fill renders. In the cases of White Fill and Colour Fill, enabling the 'Support Non Drawn Lines In Scanline Renders' preference (Render Settings) is a prerequisite for this to function

The effect will be a reduction in the number of (unnecessary) lines used to represent a complex drawing, and will impact upon models from any source (2020 standard catalogues, or imported SketchUp models).

The default setting for this preference is "4" (degrees), but this can be modified via a preference entered directly in PPPrefs.ini:

```
[Graphics]
EdgeRemovalTolerance = "n"
```

User Interface/User Experience

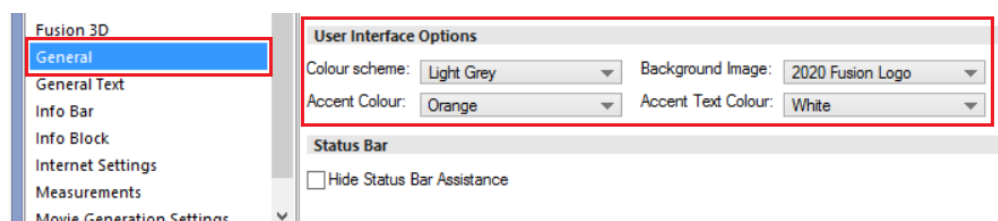
2020 Corporate Rebranding

2020 Fusion now has a new icon which can be seen in many areas of the application, ranging from the desktop icon, to its splash screen, the 'about' box and in various wizards and dialogs.



The application's new default user interface colour has also been aligned with the 2020 corporate branding. Version 4's default 'colour scheme' is set to 'light grey', the accent colour to 'orange', the 'accent text colour' to 'white' and uses its own ribbon 'background image'.

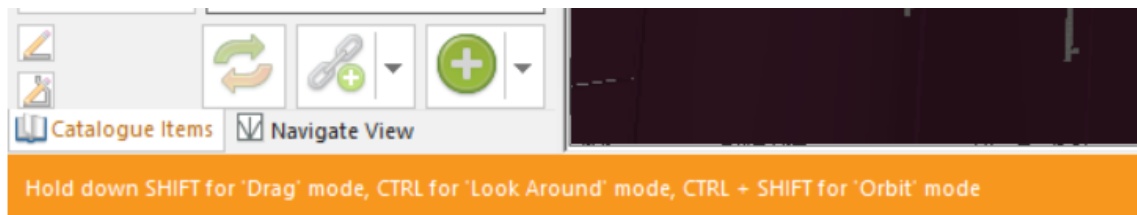
Users are still at liberty to change these user interface options via the 'General' section of 2020 Fusion's 'Options' to their own preferred colour scheme.



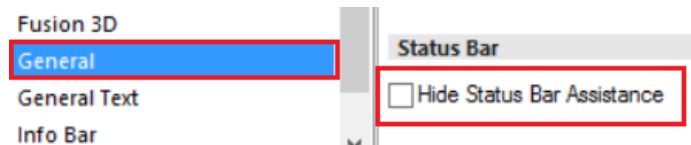
Status Bar Assistance

2020 Fusion has the concept of 'trackable actions' – i.e. ongoing actions being undertaken by a designer for which there may be a range of additional options made possible by the use of 'accelerator keys'. For example, when navigating in 2020 Fusion, it may be possible change the navigation mode used by also pressing combinations of CTRL and SHIFT on the keyboard.

Previously, designers would have to rely on their memory, referencing tooltips or help documents in order to recall which accelerator keys could be used in a given design situation. Now, when a trackable action is being undertaken, details of the relevant accelerator keys are displayed in the form of 'status bar assistance' in the area normally occupied by the progress bar at the bottom of the screen.

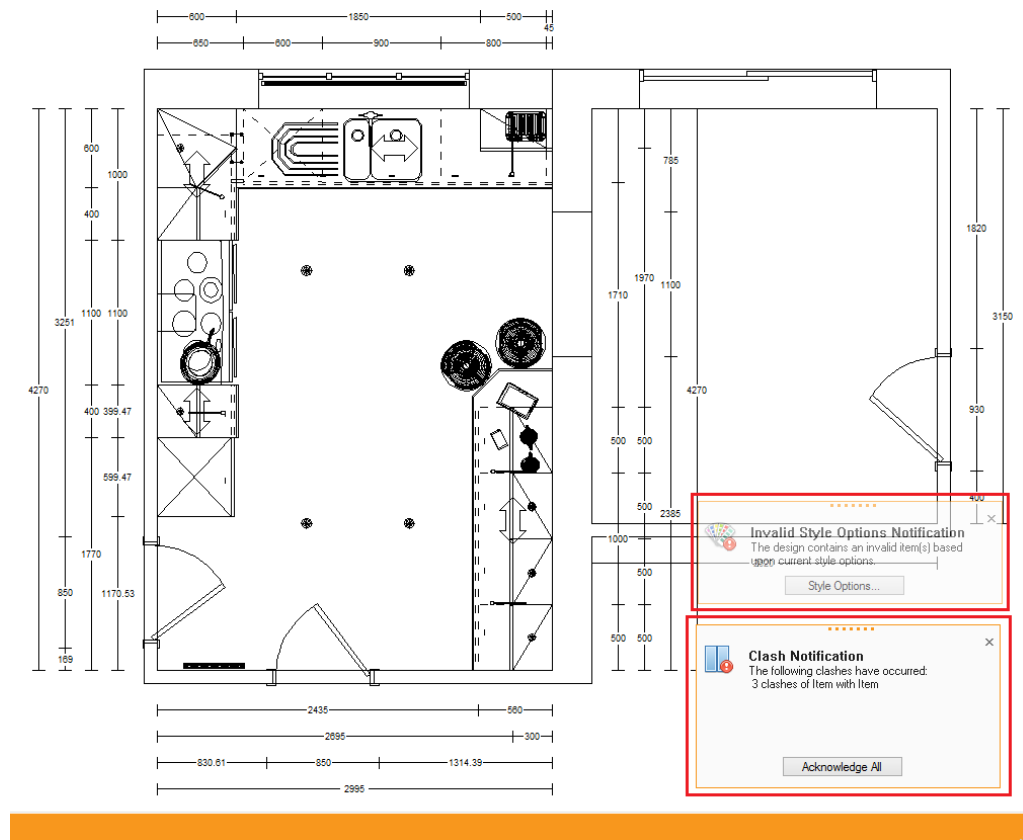


Should a designer prefer not to see this information, it is possible to disable this functionality via a user accessible preference in the 'General' section of 2020 Fusion's 'Options'.

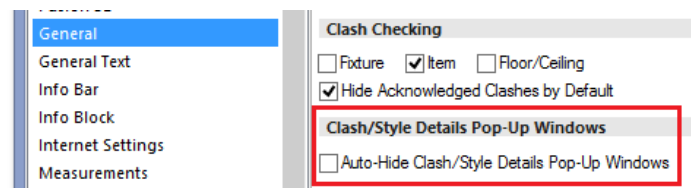


New User Interface for Clashing/Item Availability Notifications

The user interface of the clash and invalid style options notifications has changed in version 4 to a format that does not cause the view on screen to resize or to rerender. Now, such notifications are presented in the form of a pop-up dialog rather than a notification bar, similar to the email notification mechanism in Microsoft Outlook.



A user accessible preference has also been added in respect of the new user interface, which allows the end user to determine whether the notification remains visible until addressed or dismissed, or whether it will 'autohide' after a period of time:

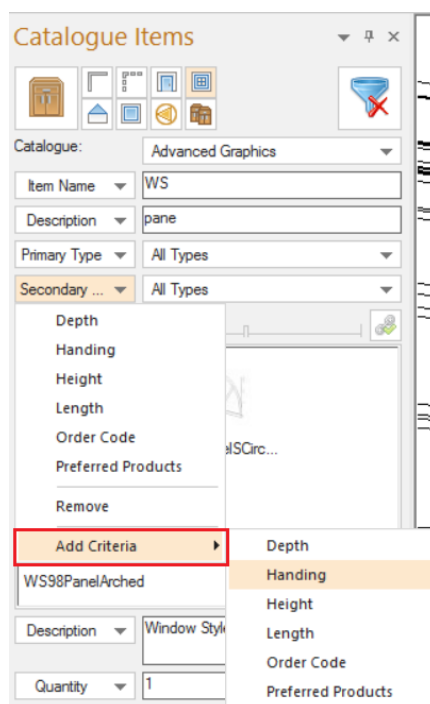


Note: The underlying functionality of each of the clashing and invalid style options features in Fusion remains unchanged.

Catalogue Items Palette: Increased Available Real Estate

In order to maximise the 'real estate' of the Catalogue Items palette, the location of the two 'Add Criteria' buttons has been changed. Rather than always being displayed at the top level of the palette, this option has now been integrated into the area occupied by each of the existing criteria in use.

As a result of this change, the Add Criteria button no longer occupies valuable space that could be used to display more products and it is now possible to 'insert' new criteria at any position in the list.



Also, as part of this feature, a new preference has been added allowing the definition of the minimum permissible height of the section displaying the list of products themselves. This preference can only be defined directly within the PPPrefs.ini file and is as follows:

[AddPalette]

ItemListMinimumHeight = "Height in Pixels"

If the preference is absent, the current default of 200 pixels will continue to apply.

Note: the above changes apply to both the standard Catalogue Items palette and the Tiling palette.

Item List View: Justify Price & VAT to the Right of their Columns

2020 Fusion's Item List view now presents the values displayed in the 'Price' and 'VAT Type' columns as right justified by default.

Alert	Pos. Number	As Added	Item Name	Description	Handing	Price	VAT Type
	55	19	500 2 Drw	500mm 2 Drawer Base Unit	Left	£ 107.99	20.0 %
	56	20	931 CC Cnr Bas...	931 Concave Curved Corner Bas...		N/A	
	57	22	600 HL App Door	600 HL Appliance Door	Left	£ 47.99	20.0 %
	58	25	600 HL App Door	600 HL Appliance Door	Left	£ 47.99	20.0 %

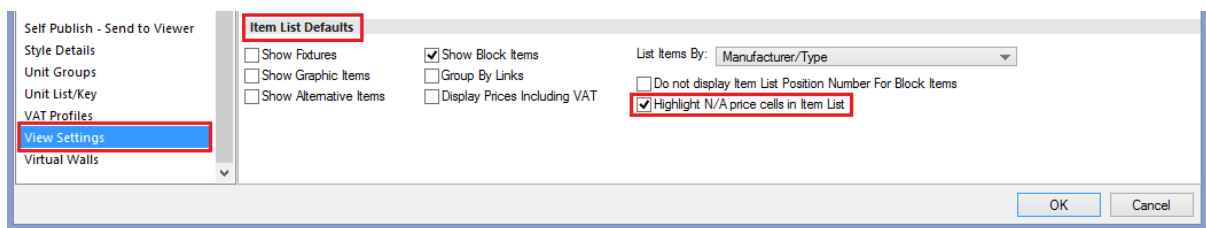
Should one wish to continue with these values being left-hand justified, then it will now be necessary to set the following hidden preference in the [Customise] section of the PPPrefs.ini file:

LeftJustifyPriceAndVATColumns = "1"

Item List View: Highlight Price Field When Item Has Price of 'N/A'

This feature was implemented to allow designers to more clearly indicate the presence of items that are not available ('N/A') within the Item List view.

A user-accessible preference has been added to the 'Item List Defaults' section of 'View Settings' in 2020 Fusion's 'Options'.



Setting this preference will result in the following effect upon the 'Price' cell for any design item that is not available in the style to which it is assigned.

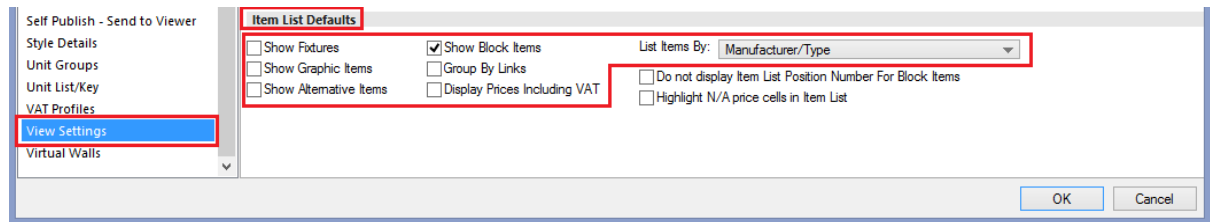
Alert	Pos. Number	As Added	Item Name	Description	Handing	Price
	55	19	500 2 Drw	500mm 2 Drawer Base Unit	Left	£ 89.99
	56	20	931 CC Cnr Bas...	931 Concave Curved Corner Bas...		N/A
	57	22	600 HL App Door	600 HL Appliance Door	Left	£ 39.99
	58	25	600 HL App Door	600 HL Appliance Door	Left	£ 39.99

The default for this preference in a new installation of 2020 Fusion will be for it to be turned off.

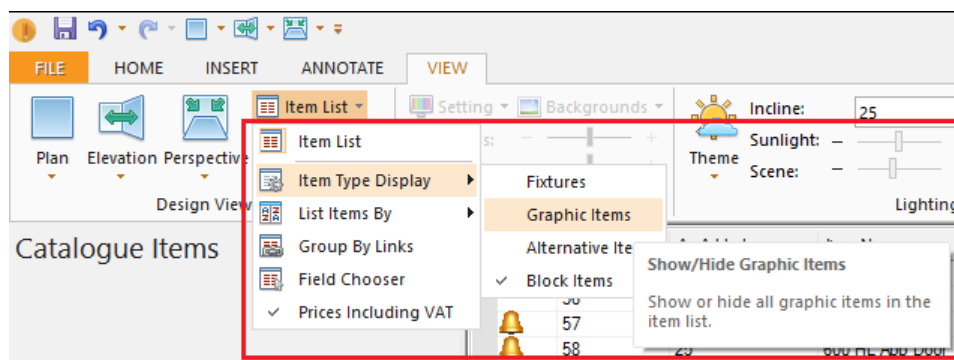
Ability to (Easily) Define Defaults for Item List Settings

Through the addition of new preferences in the 'Item List Defaults' section of 'View Settings' in 2020 Fusion's 'Options', it is now possible to define the preferred means of presenting item information in the Item List view.

As such, it is now possible to define whether fixtures, graphic items, alternative items and block items are shown in the item list by default. In addition, it is possible to define whether 'Group By Links' is activated by default and whether prices are displayed inclusive of VAT by default. Finally, the default ordering method for the Item List view ('List Items By') can be defined in this area.



Once saved, the chosen default settings will be automatically applied to the Item List view upon the creation of any new design.



Design Creation

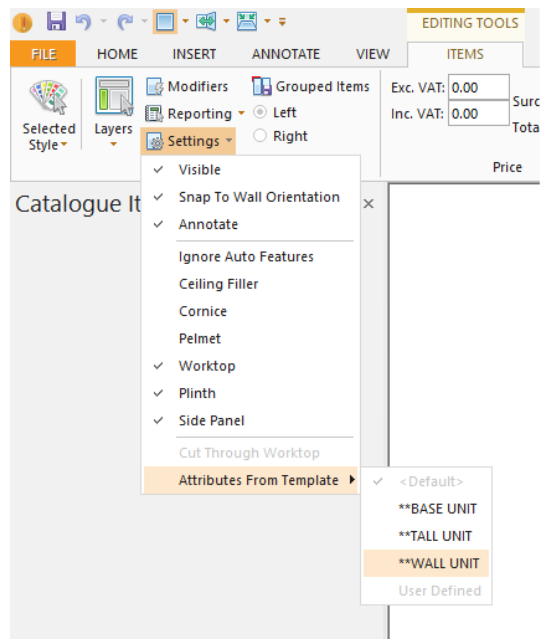
Modify Object Attributes from Template

Occasionally, designers will repurpose catalogue items for uses or scenarios for which they were not originally defined by default. In terms of 2020 Fusion, this is very simple to do in terms of moving the item within the design – for example, repositioning an item classified as a base unit within a wall unit configuration. However, it would then also be necessary to change many other attributes in order to ensure that the item behaves correctly in its new setting. Designers would not always remember to do this and errors may arise.

2020 Fusion now allows the designer to choose from a selection of templates and apply them to a given room object, allowing it to be regarded as a base unit, wall unit, or tall unit. This is similar to the corresponding behaviour when adding Non-Standard items to a design.

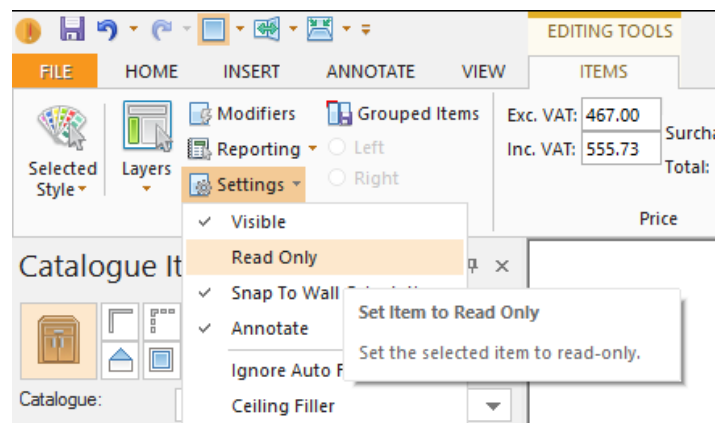
When applying the template, the following attributes will be automatically modified in line with the selection:

Layer, Report Category, Dimension Category, Primary Type, Secondary Type, Height from Floor (based on the Height Category), Can Ceiling Filler, Can Cornice, Can Pelmet, Can Worktop, Can Plinth, Can Side Panel, Can Side Plinth, Can Surface Cover, Can Cut Holes in Graphic Fixtures In Elevation, Can Cut Through Worktop, Cut Out Surface Cover, Tile Behind, Tile into Recess, Tile Niche Back.



Ability to Make Design Items 'Read Only'

This feature introduces a new option to the 'Settings' section of the 'Items' tab which allows an end user to make a design item 'read only'. By making an item read only, it would then become impossible to modify its attributes, to delete it, or to replace it.



Items with a read only state will be indicated as such both in the 'Alerts' column in the Item List view and in the item information area of the Status Bar.

Alert	Pos. Number	As Added	Item Name	Handing	Price
	1	1	WAND		£ 0.00
	2	2	WAND		£ 0.00
	3	3	WAND		£ 0.00
	4	4	WAND		£ 0.00
	5	5	Ceiling		£ 0.00
	6	6	Floor		£ 0.00
	7	8	U1007135S		£ 467.00
	8	10	U1007135		£ 351.00
	9	11	U1007135Z2		£ 653.00
	10	12	U1007135SZ2		£ 726.00
	11	13	U10071		£ 293.00

007135S Unterschrank Korpus:T: 35 cm 2 Schubkästen 2 Tü... 

This functionality's value is in scenarios where parts of the design may already be ordered or delivered, but other items have not and may still require further modification. This is most common in integrated solutions.

This functionality is disabled by default, but can be activated via a hidden preference:

[Customise]

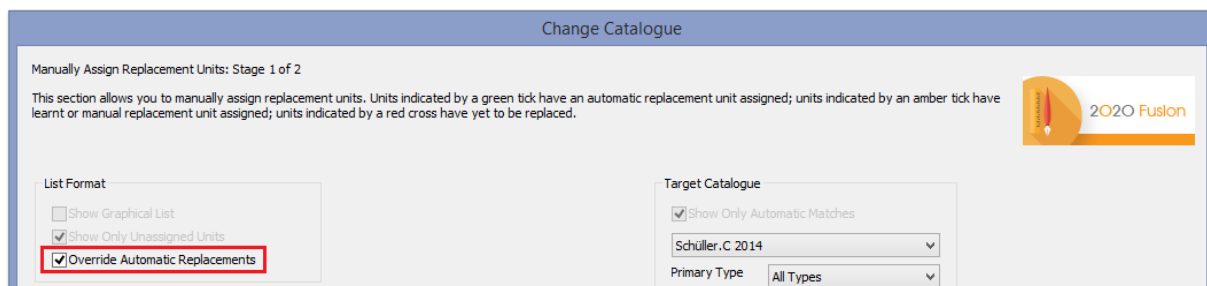
DisplayReadOnlyUnitStatusMenuItem = "1"

Additional hidden preferences are also available to determine the behaviour of read only items when changing catalogue, using 'save as', or when mirroring a design. Please refer to the specification or 'Prefs Spec' for further details.

Change Catalogue: Override Automatic Replacements

2020 Fusion's Change Catalogue mechanism contains built-in functionality to automate the overall process of creating a variant of an existing design using an alternative manufacturer. Where automatic matches cannot be achieved via this mechanism, the designer can still manually match products between two manufacturers which can, in turn, be stored in a 'learning file' for future use.

Version 4 delivers a further enhancement to the Change Catalogue feature which satisfies a requirement expressed by some designers who wish to take greater control of the product matching process between catalogues and define all matches manually, thereby overriding the automated solution.



This new functionality is facilitated via two hidden preferences; the first to expose the option to override automatic replacements, the second to make this the default state of the option:

[ChangeCatalogue]

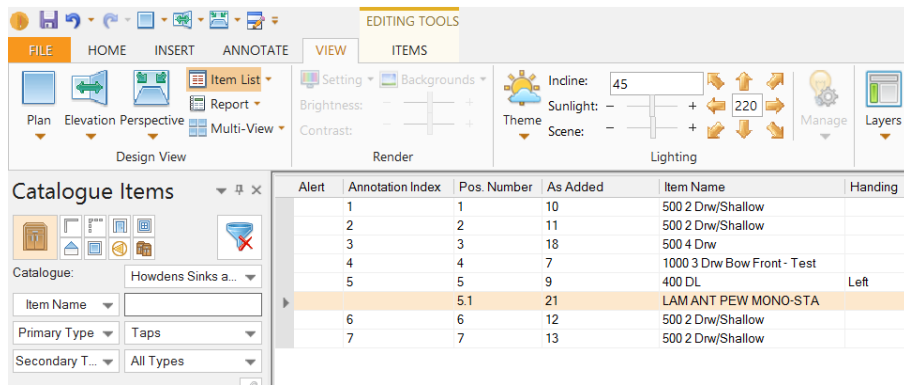
ShowOverrideAutomaticReplacement = "1"

OverrideAutomaticReplacement = "1"

Replacement links to still be linked to the original parent unit

2020 Fusion already allows a designer to 'replace' a selected design item (or items) with any other which is highlighted in the Catalogue Items (Add) palette, using a button with the same name. However, in previous versions, if the item being replaced was one that was linked to another, then the link to its 'parent' would be lost upon replacement and the new item would be listed entirely independently. The loss of this connection to the parent item was liable to cause errors and inaccuracies when reporting and ordering.

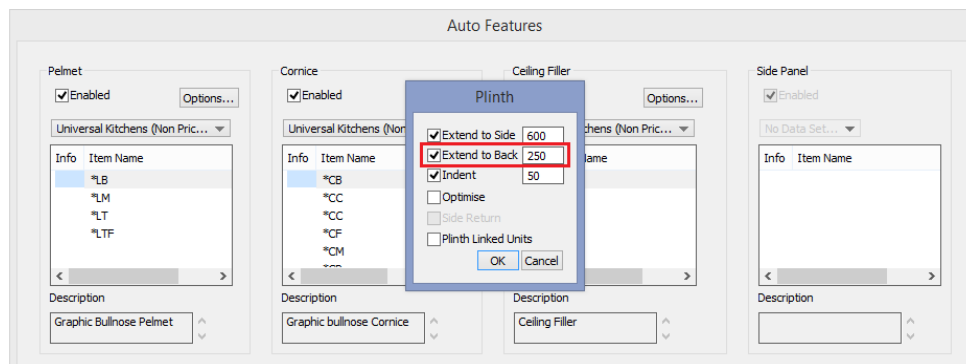
Now, in Version 4, if the item being replaced is a 'sub-link' of another item, then its replacement will adopt the same position and parental relationship as its predecessor.



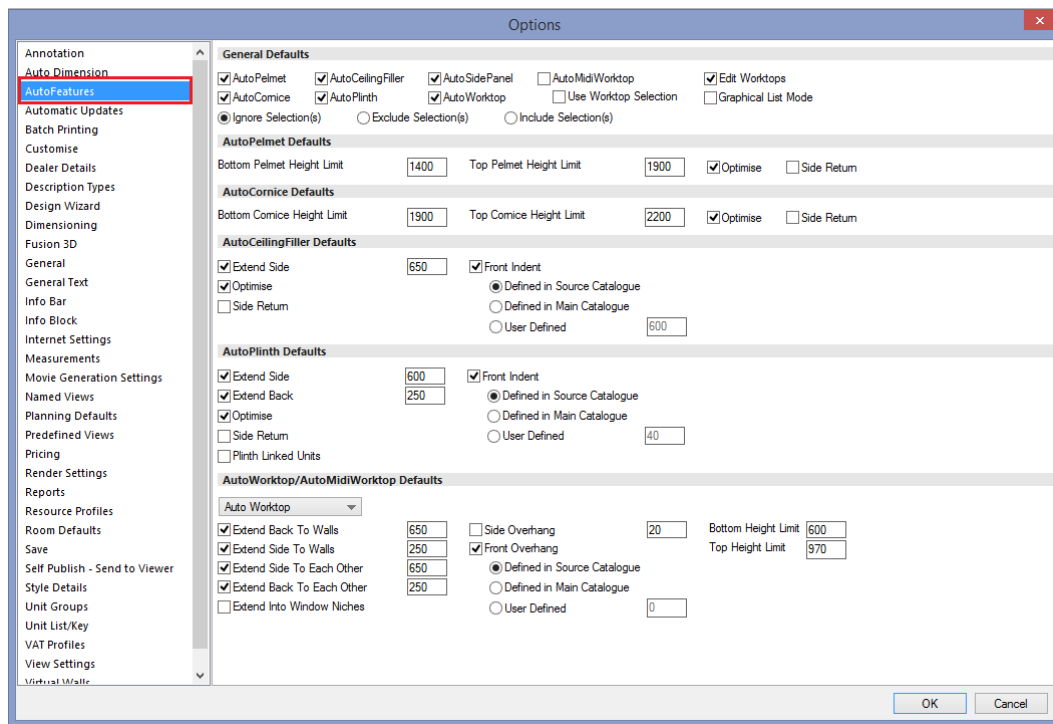
'Extend to Back' Options for AutoWorktop, AutoMidiWorktop and Autoplinth

It is already possible to specify whether (and how far) worktops, midi worktops and plinths should extend their back edges to walls, their side edges to walls and their side edges to each other during the auto-worktop, auto-midiworktop and auto-plinth processes. In Version 4, this functionality is now further enhanced by allowing the end user to define preferences for extending the back edges for these Autofeatures to each other.

This functionality will be particularly useful in island unit configurations where, previously, even a small gap between 'back to back units' could generate undesirable results. Now, in such circumstances, a single piece of worktop will be applied and the plinth made to continue onto the opposing unit, subject to the effect of the default state and values set. As with the existing autofeatures options, it will of course be possible to alter the default values on a per design basis, via the 'Options...' buttons in the Autofeatures dialog itself.



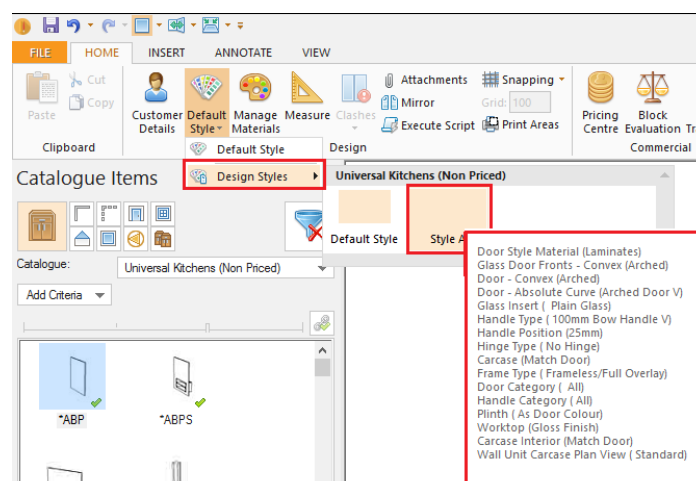
Furthermore, the feature has also introduced the ability to define default preferences for all of the options offered in the 'Autofeatures' dialog via additional user-accessible entries in the corresponding section of 2020 Fusion's 'Options':



Change Style Details for Additional Style Blocks

2020 Fusion's (Change) Default Style functionality has been extended in order to allow the designer to more easily change the style settings for additional style blocks. Until, now the only way of achieving this was to first select all of the items within the style block (via 'Select Items by Style' on the 'Home' tab) and then select 'Change Selected Style' on the 'Items' tab.

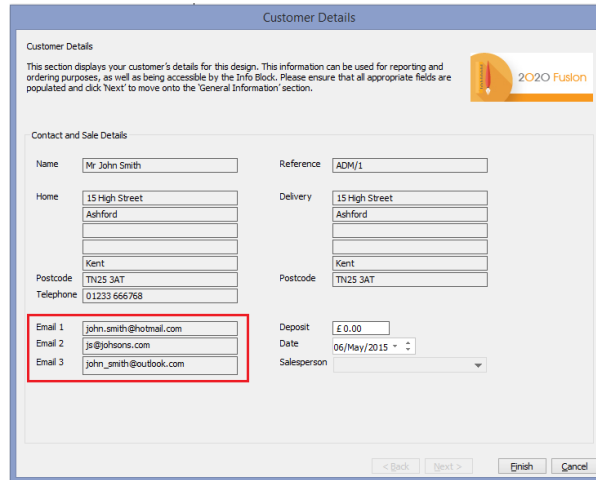
Now, with an additional option under 'Default Style' on the 'Home' tab, a designer can now change the style options for any of the additional style blocks present within the design without needing to select the items first, thereby saving a large number of clicks.



Customer Management

Customer Details Dialog: Email Addresses

The 'Customer Details' dialog has been extended to display up to three separate email addresses for the customer. If running 'Connect', these will be inherited from the entries in the corresponding customer record; if running 'Standalone', these can be entered directly into the dialog itself.



Ability to Merge Customer Databases

Using the existing Database Utility Tool, it will now be possible for the contents of two 'Connect' databases to be merged into a single one. A log file will be created that will record the actions carried out during the merge process.

Note: for those wishing to merge two Access databases, please consider the fact that there is a 2GB maximum size limit. Please also ensure that both source databases have been backed prior to undertaking a merge.

It is strongly recommended that you consult with your local support representative or account manager before attempting this process.

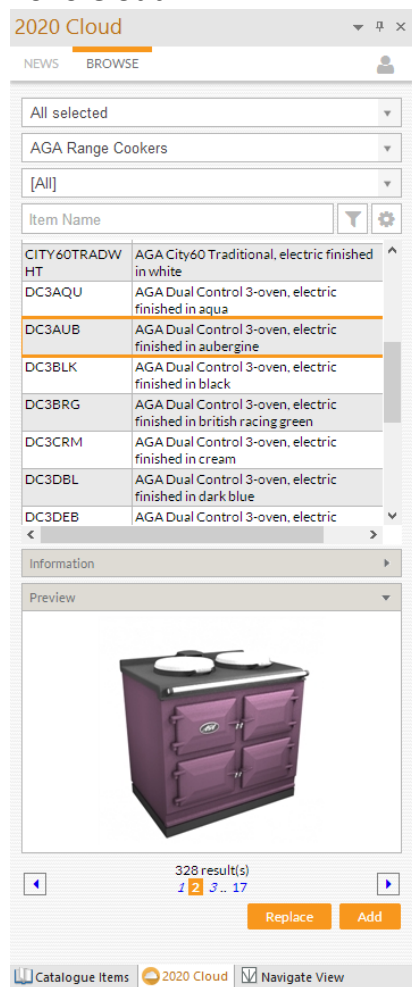
Pricing & Ordering

No Trade Block

This feature reflects the introduction of a new concept within 2020 Fusion's existing Block Evaluation silent trade block functionality, namely that of a 'No Trade Block'. A status of 'no trade block' will be applied to a design in the event that no trade blocks offer a price advantage.

Content Production & Deployment

2020 Cloud



2020 Cloud is the industry's first online solution for accessing the latest manufacturers' catalogues directly from 2020 Fusion. The key benefits are as follows:

- No download is required: content is streamed 'live'.
- Catalogues are always up to date, saving you valuable time and eliminating costly mistakes
- Catalogues are all certified, guaranteeing quality and accuracy for all your designs
- Products are searchable across one or more catalogues by using a combination of advanced filters to easily find the exact manufacturer's item you're looking for.

2020 Cloud is designed to operate seamlessly alongside all your existing 2020 Fusion catalogues, with access to 2020 Cloud products coming from its own dedicated 'palette'.

As well as the ability to add and replace products, an integrated 'Newsfeed' will provide you with the very latest information directly from 2020.

Many more catalogues will be added to 2020 Cloud over the coming weeks and months, so be sure to keep an eye on the Newsfeed for further information.

Users of 2020 Cloud will be required to be a member of the 2020 User Community, as their same username and password will be required to access 2020 Cloud.

For further information regarding 2020 Cloud, including a range of videos and 'how to' guides, please visit the [2020 Fusion Forum](#).

Cat Admin: Ability to Pass Updated Parent Information onto Child (Cloned) Units

In Catalogue Admin, it is already possible to 'clone' a unit from a parent catalogue and create a 'child unit' in a corresponding 'child catalogue'. The designer can then change prices, descriptions or any of the other child unit's settings that are displayed within Catalogue Admin. These revised attributes would then be displayed in 2020 Fusion.

However, until now, the effectiveness of this solution was completely dependent upon no changes being subsequently made to the original unit stored in the parent catalogue.

In Version 4, as a result of this feature enhancement, only user-defined/overridden unit information will be stored in the cloned unit within the child catalogue; all other unit information will be passed to the cloned unit directly from the original unit in the parent catalogue at the point when the (cloned) unit is added to a design within 2020 Fusion.

This change of behaviour now means that, if changes are subsequently made to a unit in the parent catalogue that have not been overridden themselves in the child catalogue, then those changes will be reflected within any child units that were cloned from that unit prior to the changes being made.

In addition, it has now also been made possible to modify any of the unit descriptions (short, recommended, long and planning text) via Cat Admin, as well as to be able to modify any of the dimensions (suggested, minimum and maximum for both graphic and order dimensions).

Finally, a change to the user interface will warn the end user in the event of values being different to the parent item.

Catalogue Updates Enhancements

A number of enhancements have been made to the user interface of 2020 Fusion's 'Catalogue Updates' dialog (aka 'online transfer tool'); these comprise:

- The addition of a 'Search' field.
- The ability to hide unwanted updates (working in a consistent manner to 'Windows Update').
- The retention of displayed columns, as well as their sizes and order.
- Additional columns: 'Local Version Date', 'Remote Version Date' and 'Catalogue Type'.
- Optimised layout, including more spaces for notes and messages.

Miscellaneous

SysChecker Update

Version 4 has an additional system requirement: the installation of the .Net Framework 4.0. SysChecker now includes a check for this.

Please note that .Net Framework 4.0 generally comes preinstalled on most machines using Windows 8 onwards; however, the 2020 Fusion standard installer has also been updated to incorporate a prompt to install .Net Framework 4.0, if it is not already present on the end user's machine.

In addition, an improvement has been made to ensure QuickTime is correctly checked following the identification of an issue when running on a 64bit machine.

Finally, SysChecker has also been updated to recognise Windows 10 as a valid operating system.

