

What's New in Version 12



2020 Design 12

© 2020 Technologies Inc. All rights reserved.

Table of Contents

What's New in Version 12	1
Introduction	2
New Features	3
Increased performance with 64-bit architecture	3
Configurable dockable panes.....	3
Local Browser for your local catalogs.....	4
Cloud Browser for your catalogs	4
Enhance your designs with the latest interior doors	5
Add Shaker door cabinets to your designs	6
Measure the distance of lighting fixtures more accurately.....	6
Enable or Disable the duplication of Elevations.....	7
Change the texture size in your renderings.....	8
Incorporate the latest ScketchUp Models	9
Error reporting mechanism.....	9
What happened to Room Viewer and QuickBook?.....	9
About NKBA, Auto-Deco, and AutoCAD.....	10
Trademarks	10

Introduction

The topics of this What's New help file describe the features added or enhanced in Version 12 of 2020 Design.

The information provided in this What's New help file is for users with experience on 2020 Design who are upgrading from a previous version 10+ or version 11 and +.

If you are new to 2020 Design, please watch the training videos which you can access through the **HELP** ribbon.

You can also register for classroom training.

2020 Design e-Learning

Begin with our self-paced e-Learning and start designing with 2020 Design right away.
Each training video is less than 10 minutes long, and you can review them all or select the topics that are most important to your business.

Getting Started

Step 1 - Getting Started with 2020 Design:
4 hours 20 mins of self-paced learning
Ideal for new users

[Get Started](#)
FREE for new customers!

Going in Depth

Step 2 - Going In Depth with 2020 Design:
4 hours of self-paced learning
Ideal for new and experienced users

[Visit 2020.net](#)
FREE for customers on support!

New Features

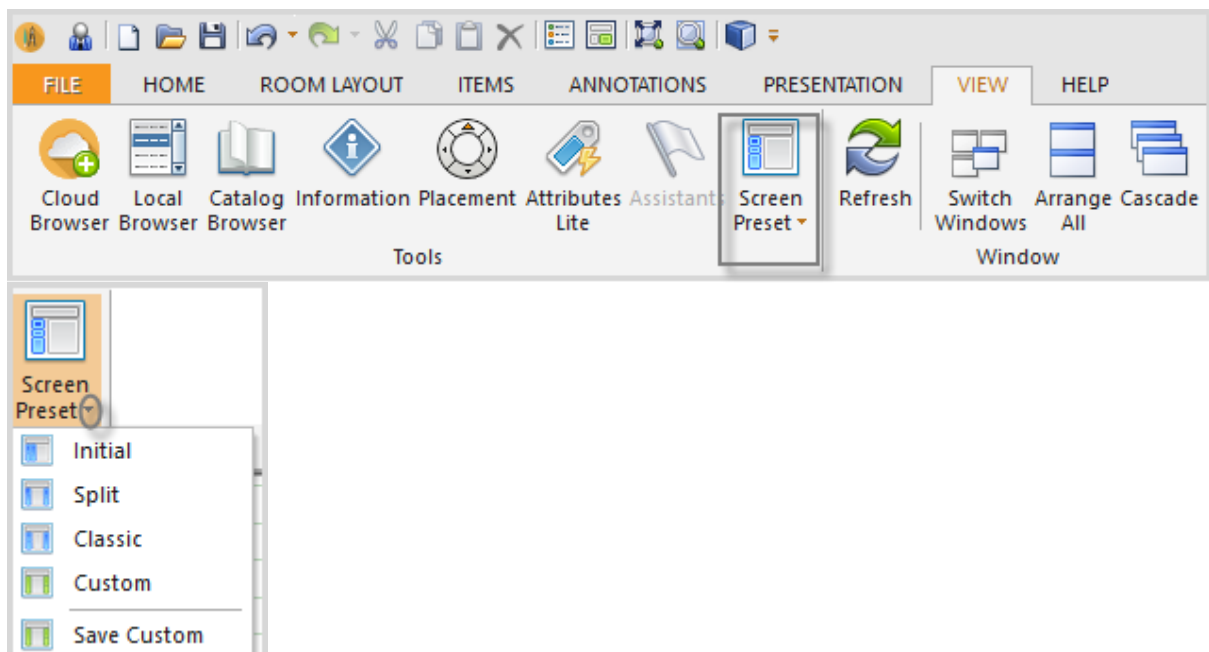
- ▶ [Increased performance with 64 bit-architecture](#)
- ▶ [Configurable dockable panes](#)
- ▶ [Local Browser for your local catalogs](#)
- ▶ [Cloud Browser for your catalogs](#)
- ▶ [Enhance your designs with the latest interior doors](#)
- ▶ [Add Shaker door cabinets to your designs](#)
- ▶ [Measure the distance of lighting fixtures more accurately](#)
- ▶ [Enable or Disable the duplication of Elevations](#)
- ▶ [Change the texture size in your renderings](#)
- ▶ [Incorporate the latest SketchUp models](#)
- ▶ [Error reporting mechanism](#)
- ▶ [What happened to Room Viewer and QuickBook?](#)
- ▶ [About NKBA, Auto-Deco, and AutoCAD](#)

Increased performance with 64-bit architecture

The migration of 2020 Design to 64-bit architecture allows users to effortlessly generate high-quality renderings and 360° panoramas.

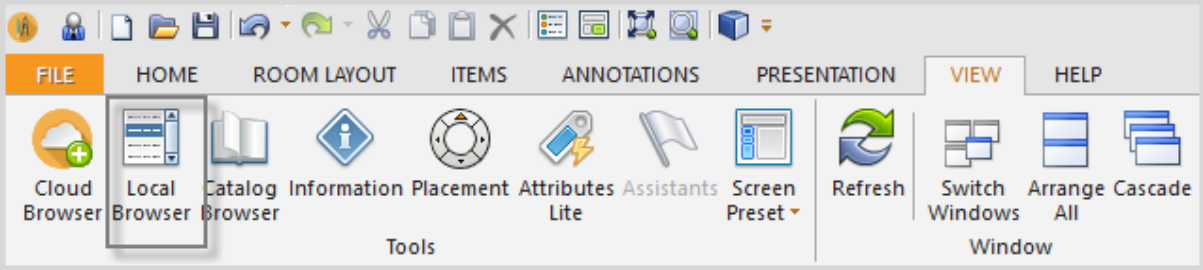
Configurable dockable panes

Click the new « Screen Preset » button to display which dockable pane view is best for you.



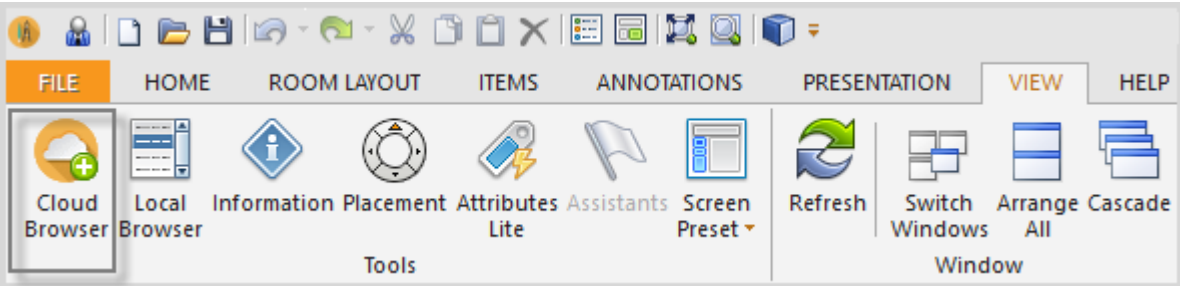
Local Browser for your local catalogs

Your local catalogs are now available from the «Local Browser» option, which was previously called *Drag and Drop*.



Cloud Browser for your catalogs

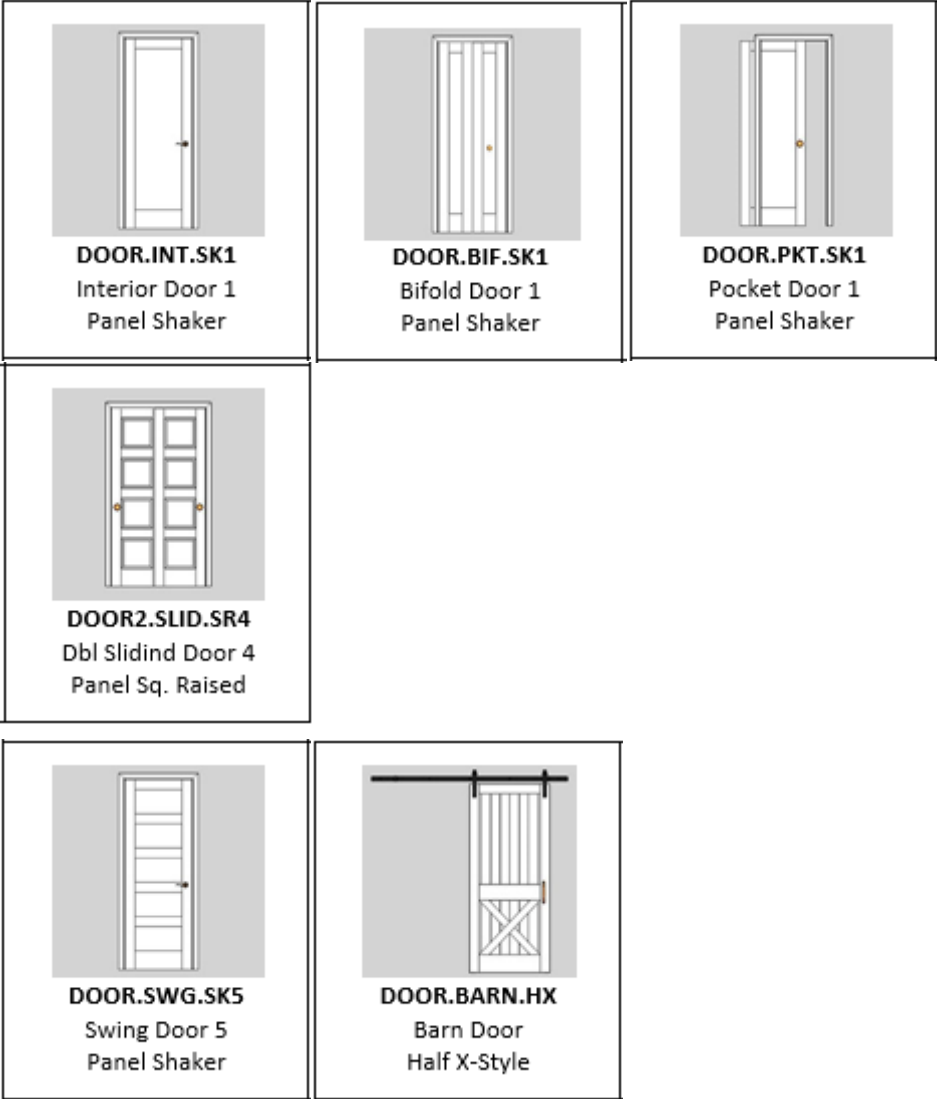
Your cloud catalogs are now available from the «Cloud Browser» option, which was previously called *2020 Cloud*.



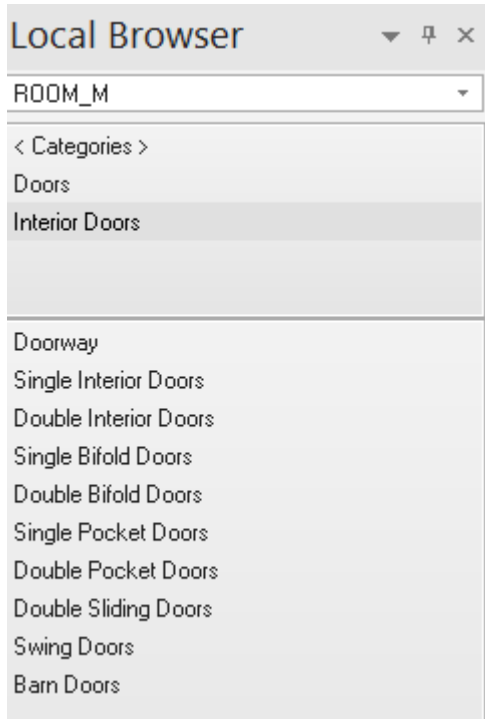
Enhance your designs with the latest interior doors

The ROOM catalogs now include a new collection of exciting door styles to finish your designs with (over 100 interior doors).

The following are a few examples of our amazing new interior doors.



To access these Interior Doors, click Local Browser -> select one of the ROOM catalogs -> click **Doors -> Interior Doors**



Add Shaker door cabinets to your designs

The ever-popular, simple and beautifully crafted Shaker cabinet door style has been incorporated in the latest version of 2020 Design. There are two variations to pick from with a variety of colors and finishes to design with.

Here are the 2 cabinet door styles we have added to the Sample Catalogs:



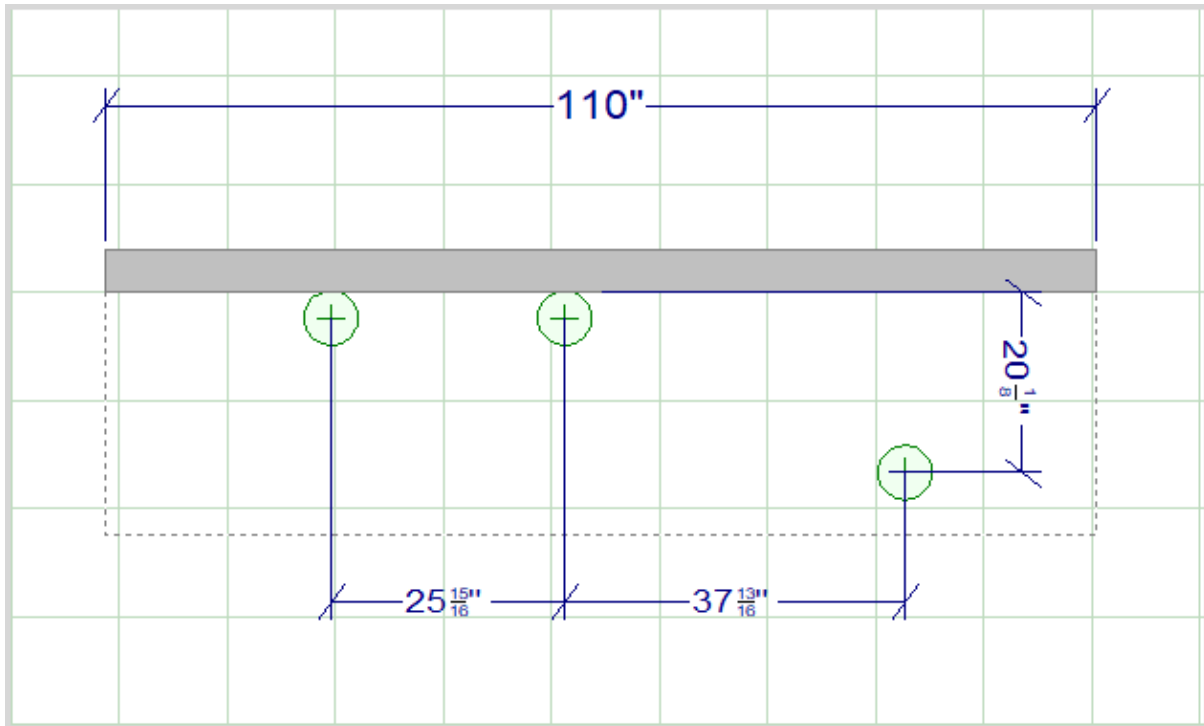
Florence



Shaker

Measure the distance of lighting fixtures more accurately

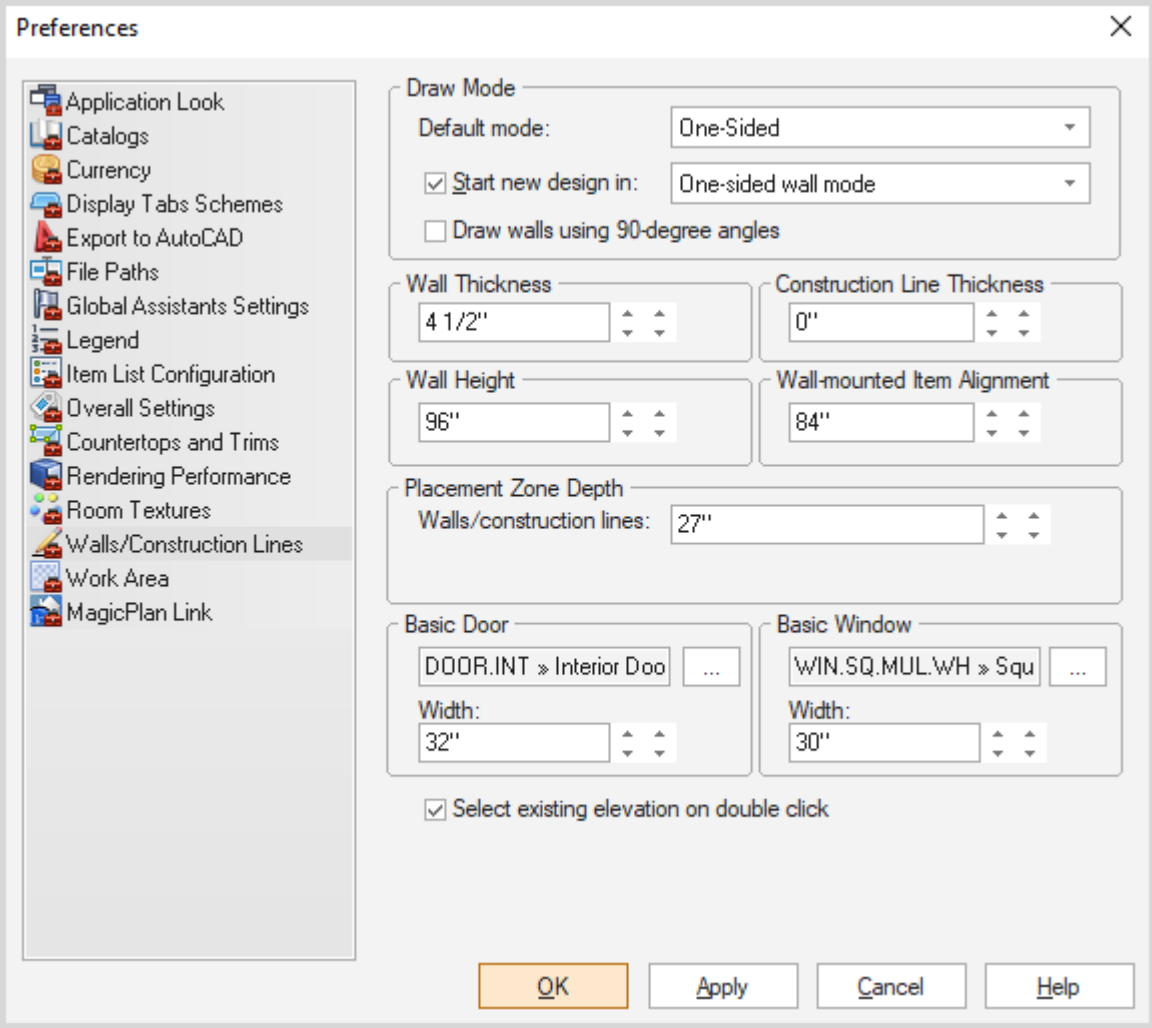
Use the new crosshair embedded in the center of 2020 Design lights to accurately and precisely position lighting within your floor plan. Designers can also annotate the designs accordingly to help the installation and electrical teams they are working with. The design in the following figure was created using recessed lights.



Enable or Disable the duplication of Elevations

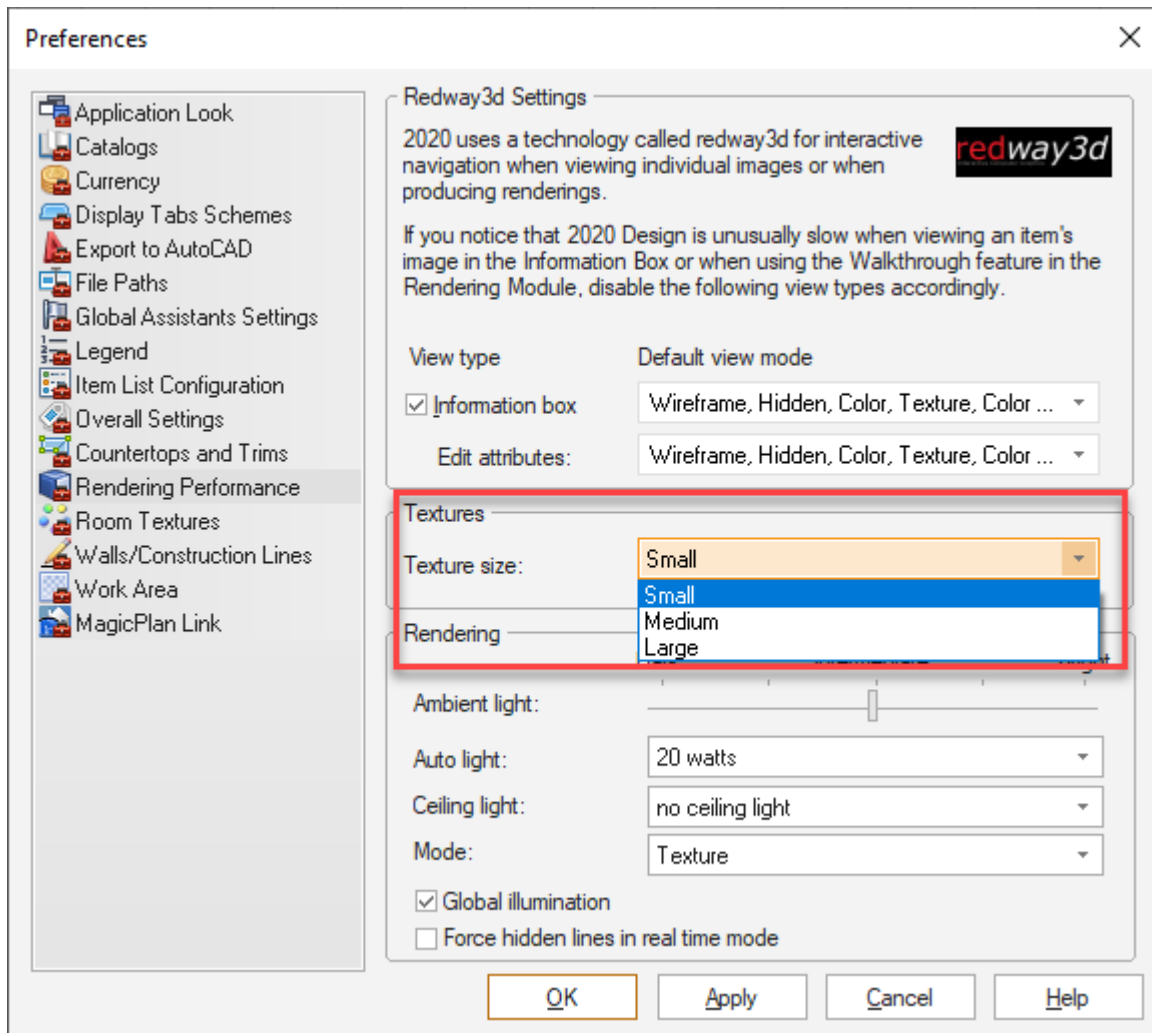
A new check box was added to preferences: **Select existing elevation on double-click.**

By default, 2020 Design does not create a new Elevation when you double-click on the same placement zone more than once.



Change the texture size in your renderings

The Textures section (previously called 'Shapes') has been updated. This allows users to select the texture size to be used for high quality renderings.



Incorporate the latest SketchUp Models

2020 Design now includes support for the latest SketchUp models, including 2019 models.

Error reporting mechanism

With the error reporting mechanism, 2020 Design can now capture user error logs. With all this user data at our fingertips, we can better analyze any user issue to provide the best possible experience with 2020 Design.

What happened to Room Viewer and QuickBook?

The « Send to Room Viewer » button was removed from 2020 Design. This functionality is no longer supported.

The « QuickBook » button was removed from 2020 Design. This functionality is no longer supported.

About NKBA, Auto-Deco, and AutoCAD

The following options were temporarily removed from 2020 Design:

- ▶ NKBA assistant
- ▶ Auto-Deco kitchen assistant
- ▶ AutoCAD Export. NOTE: the import with AutoCAD still works.

Trademarks

Published by 2020 © 201 All rights reserved

The names 2020 all associated trade names used by 2020 are registered, pending or common law trademarks of 2020 and/or of its subsidiaries. Any reference to other brands and products appearing herein are trademarks of their respective holder(s).