

2020 Fusion

What's New in Version 7?

(Up to and including Version 7.4.2)



Introduction

Welcome to 2020 Fusion Version 7!

2020 Fusion Version 7 continues to build upon the strong platform of those new features and functions previously delivered in the Version 6 series, particularly in the areas of rendering and image manipulation.

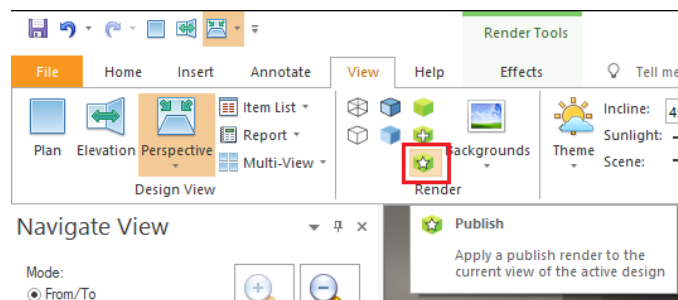
In addition, continued focus has been applied to the application's user interface and user experience, with smaller-scale enhancements (many resulting from direct customer feedback) also being implemented with the primary objective of simplifying the overall design process, either by making the product more intuitive, or by taking steps to reduce the overall 'click count'.

Details of the new features and enhanced functionality in 2020 Fusion Version 7 are listed under a series of general headings, as follows.

Viewing, Lighting & Rendering

High Quality 'Publish' Render (v7.0)

Version 7 sees the introduction of a new, higher quality 'Publish' render which includes soft reflections, soft shadows and increased levels of image refinement.



In order to achieve the higher level of quality, the render includes 'multiple passes' and, as such, will take much longer to apply than the existing Presentation and Presentation Plus renders.

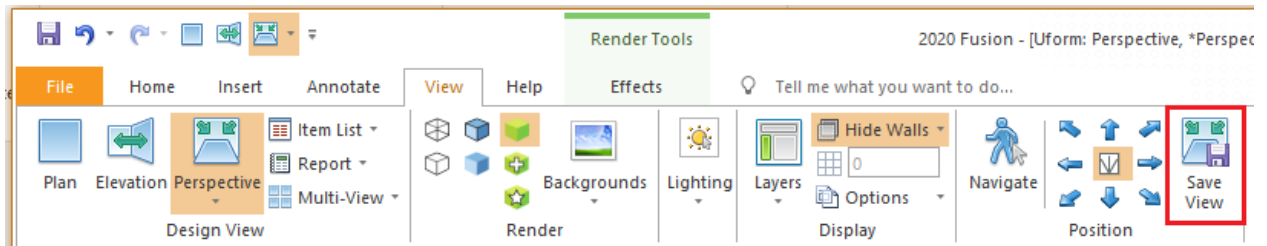
Example of 'Publish' Render Quality



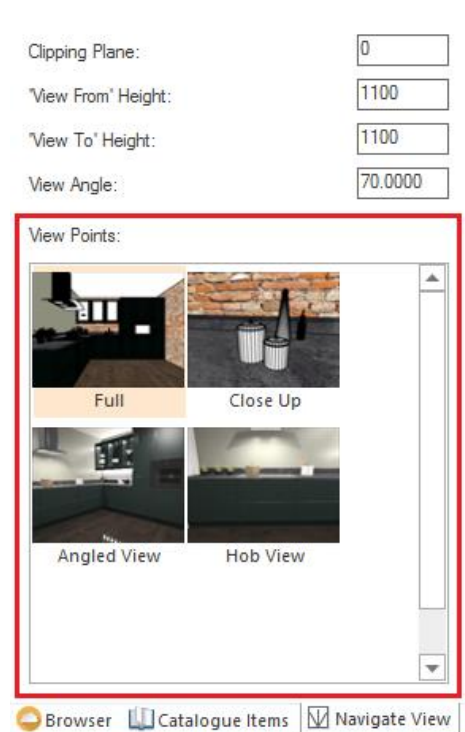
Improved Perspective View Point Management (v7.0)

Enhancements have been made to 2020 Fusion's 'Save View Point' functionality, now allowing it to be used for more than just 'Movie Generation', as was the case in previous versions.

The button itself has been moved to the top level of the View ribbon:

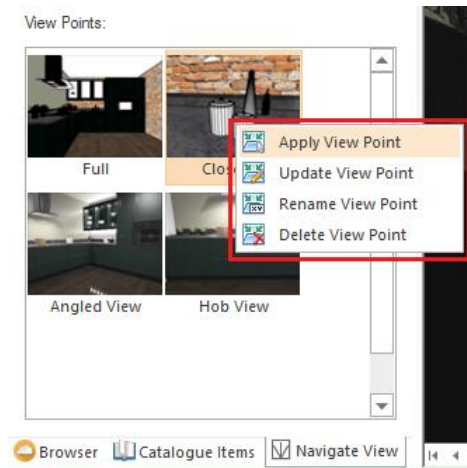


The user is now able to see previews of the saved view points within the 'Navigate' ribbon, so that they can easily review all of those that they have created to date:

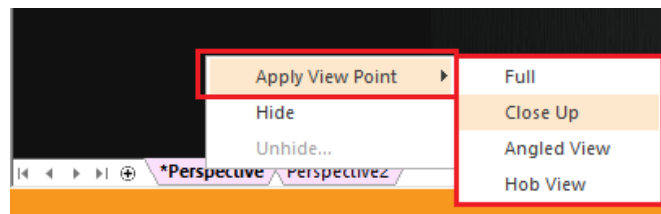


Within this interface, they can also perform the following functions:

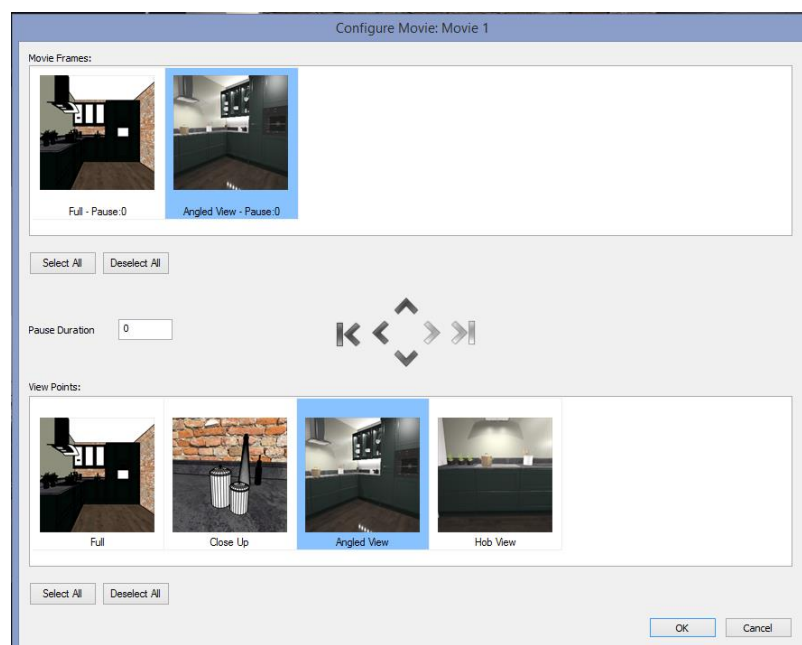
- Apply View Point: Apply the saved view point to the currently selected named view.
- Update View Point: Update the saved view point with the settings from the currently selected named view.
- Rename the View Point
- Delete the View Point



A saved View Point can also be applied to the currently selected named view by simply left-clicking on the view point itself, or via the right click functionality available on the Named View tab:



As part of this development, improvements have also been made to the 'Configure Movie' dialog, in which the names of the view points are clearly indicated and 'Select All' and 'Deselect All' options have been added.

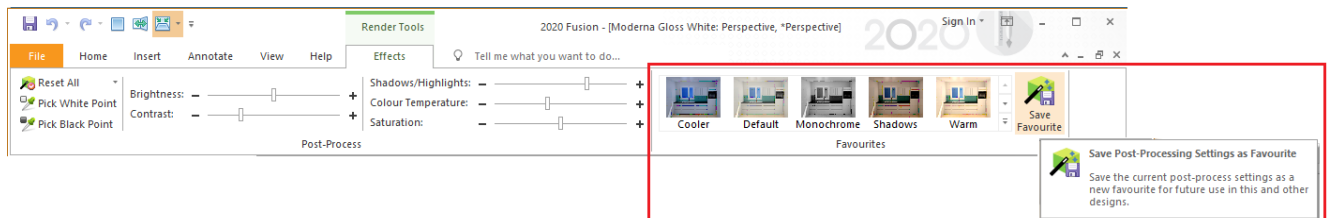


Saved View Points now also serve a valuable purpose in the creation of 360 panoramas – please see '360° Panorama Exports to Support Multiple Viewpoints' for further details.

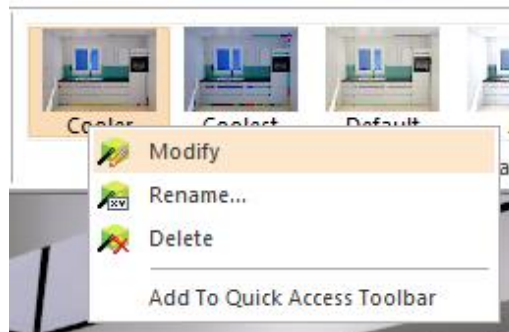
Save and Recall Effects (Favourites) (v7.0)

Following the implementation of the post-processing 'Effects' ribbon in Version 6.3, further enhancements have been made to this area of the product, with designers now able to save and recall specific configurations.

This works in a similar manner to the 'Styles' functionality in Microsoft Word, in which the effect will temporarily be applied to the design view whilst hovering over a given saved configuration. Clicking on the preview of the saved configuration will then apply it to the current named view.



In addition, right-clicking on a given saved configuration allows a user to either modify it by applying the settings applied to the currently selected named view, to rename a configuration, or to delete it.



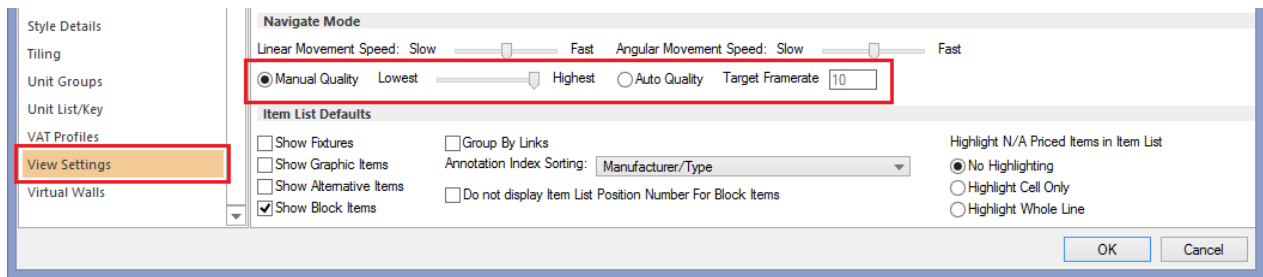
Intelligent Navigation Quality (Draft & Colour Fill) (v7.0)

Some customers, who might be working with graphics cards close to or even slightly below 2020 Fusion's system recommendations, may have experienced a less than optimum experience (i.e. a reduced frame rate) when moving around a design in the application's navigation mode. This experience may well have been exacerbated since the Draft and Colour Fill renders were improved in recent versions to also display user-added lights and shadows, as this extra level of detail places an additional demand upon a graphics card when navigating.

Version 7 introduces functionality which gives a user full control in terms of deciding the balance between navigation render quality and frame rate speed through a new set of preferences, found in the 'View Settings' section of 2020 Fusion's 'Options'.

'Manual Quality' (the default mode) allows the user to define a specific render quality level to always be used whilst navigating and the frame rate will adjust (reduce/increase) accordingly to ensure that the desired quality level is always maintained.

'Auto Quality' allows the application to assess the capacity of the system's graphics card whilst in the navigation mode and, if it is not capable of sustaining a specified 'target frame rate' (also definable as part of these options), it will automatically reduce the render quality to try and maintain a smooth navigation effect at the minimum frame rate specified.



Support for 2020 Cloud Items Containing Lighting Information (v7.0)

2020 provides an ever-increasing range of decorative items and manufacturers' products via 2020 Cloud. With effect from Version 7, if any of the 2020 Cloud design items added to a Fusion design contain a light source (e.g. spotlights, standard lamps, etc.) or possess a 'lit appearance' (e.g. LED displays, monitors, etc.) it will be equally possible to manipulate their lighting properties via the application's existing interface as it has been for 'file-based' catalogues.



Live Perspective: Ignore Design Items Containing Light Sources On Or Within the Ceiling (v7.0)

This requirement is an enhancement to the 'Live Perspective' functionality delivered in Version 6.1 of 2020 Fusion and has been implemented to ensure that only relevant design items are considered when calculating the Live Perspective viewing position.

In some designs, the presence of lights in the ceiling were unduly affecting the viewing position and so, in Version 7, a new hidden preference has been added that will determine whether visible items that contain a light source, and either touch or are within a ceiling, will be considered when applying the Live Perspective tracking option.

The preference, detailed below, will default to ignoring items containing a light source that are within 100mm of the ceiling when calculating the Live Perspective viewing position.

[Customise]

LivePerspectiveLightCeilingTolerance = "100"

Items Visible Beyond Exterior Doors & Windows (v7.2)

In Version 7.2, it is now possible to see any items placed 'outside' an exterior glass door or window, thereby giving the designer the opportunity to even more accurately reflect the overall living space of their clients. In this example, items on a small balcony of an apartment can now be seen through the glass doors, giving the design an even greater sense of detail and authenticity.



Transparent Shadows and Light Cast Through Coloured Glass (v7.2)

2020 Fusion's new rendering system has been further enhanced to now accurately represent the effect of light passing through coloured glass and for shadows cast by objects to be more graduated, depending upon the level of a given object's transparency. Each of these innovations will help to provide an even greater sense of reality to a design.

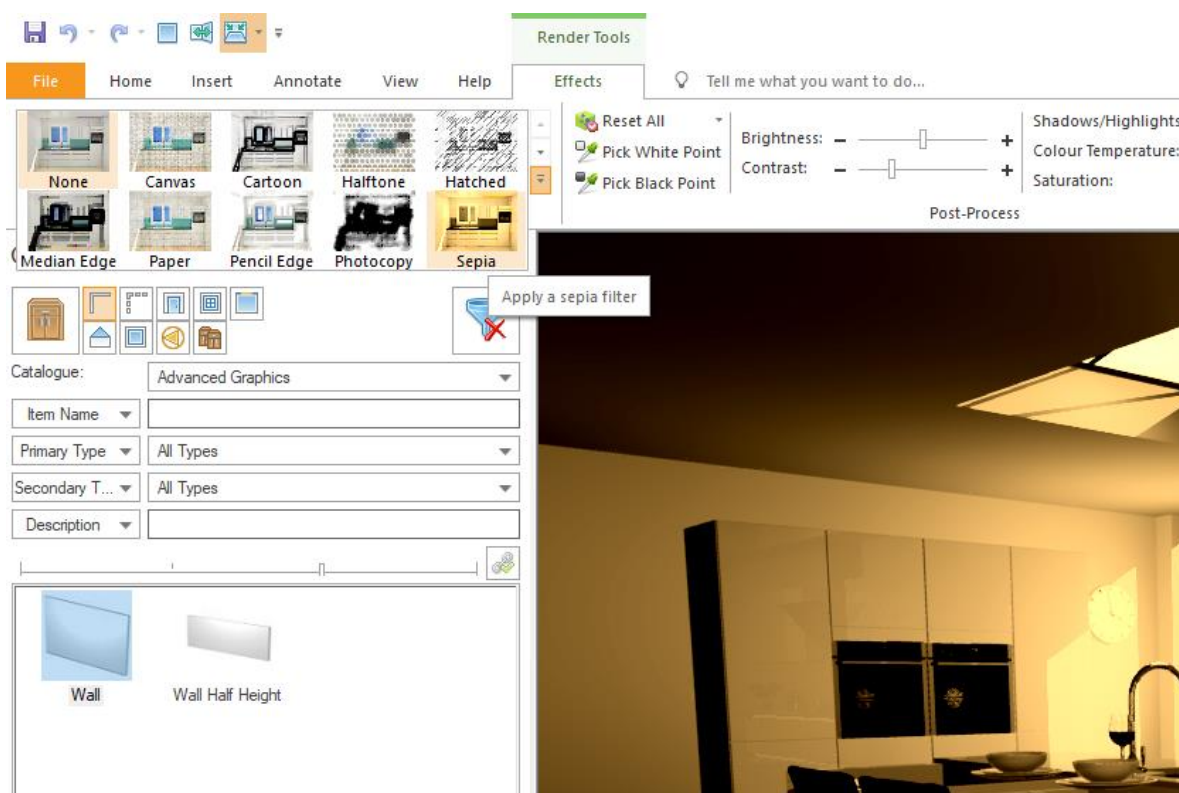


Artistic Filters (v7.3)

In 2020 Fusion Version 6, functionality was added to allow the user to apply a range of post-processing effects to a 2020 Fusion perspective view when using the Presentation, Presentation Plus or Publish renders. These effects are applied via the 'Effects' ribbon.

In Version 7.3, the post-processing tools have been further enhanced through the addition of a range of 'Artistic Filters'. These can also be applied to a qualifying perspective view to represent a variety of hand-drawn or stylised effects, or to simulate the medium upon which the image is printed. Artistic Filters can be used in combination with the existing effects sliders and can also be saved as part of a user-defined 'favourite' effect.

The artistic filters comprise: 'Canvas', 'Cartoon', 'Halftone', 'Hatched', 'Median Edge', 'Paper', 'Pencil Edge', 'Photocopy' and 'Sepia'.

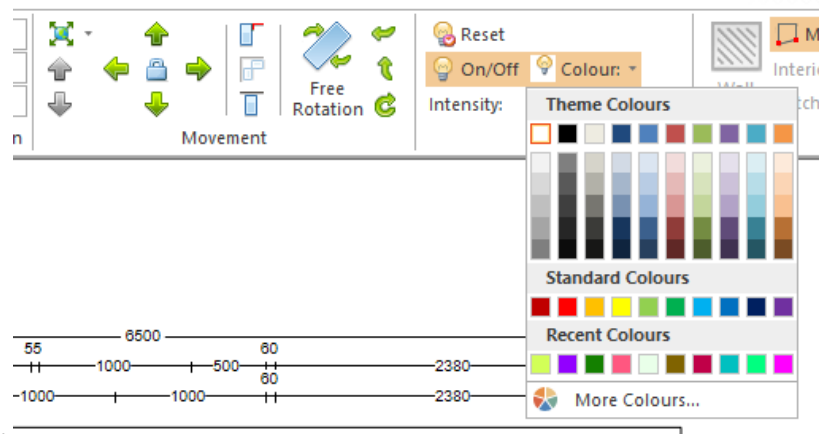


Access to Artistic Filters is license controlled. It is available to users of the 'Full' 2020 Fusion solution, but not to users of the 2020 Fusion 'Foundation' package.

User Added Lights: 'Recent Colours' to be Stored Across Multiple Design Sessions (v7.3)

2020 Fusion allows a designer to create custom lighting colours for their user added lights, using the "More Colours..." option on the lighting colours palette. Custom colours are saved to the "Recent Colours" section of the colour palette, in the order that they were last selected.

However, in previous versions, the list of custom colours would be lost when the 2020 Fusion application was closed, meaning that the designer would need to 'remix' and reapply commonly used lighting colours in subsequent sessions. From v7.3 onwards, custom lighting colours are remembered over multiple 2020 Fusion design sessions, giving the user quick access and avoiding the need for repetitive actions.



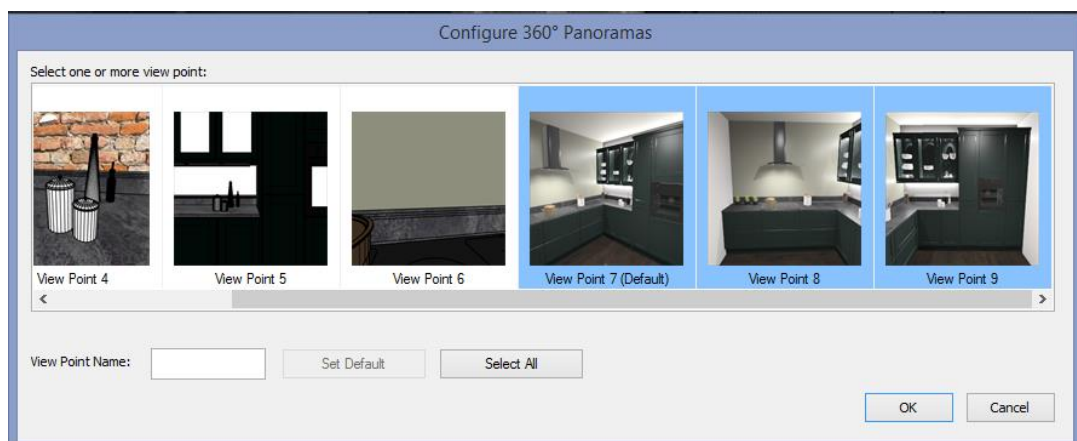
Printing & Export

360° Panorama Exports to Support Multiple Viewpoints (v7.0)

2020 Fusion's highly popular 360° Panorama feature has been further enhanced to allow the designer to now be able to incorporate a series of view points within a single published scene (i.e. a generated URL). The key benefit of having multiple view points is to allow designers to more easily showcase specific areas of designs, or to overcome difficulties in finding a suitable single view point in a particularly long or unusually shaped design layout.

The way in which this is achieved is, in part, courtesy of the 'improved view point management' functionality described earlier in this document.

The enhanced 360° Panorama generation solution now includes an additional stage in which the user can choose one or more of the saved view points in the design; of these, they can also choose which one will be presented as the default view point in the resulting output.



Each view point of the generated 360° panorama will be based upon the render and lighting settings of the currently selected perspective named view.

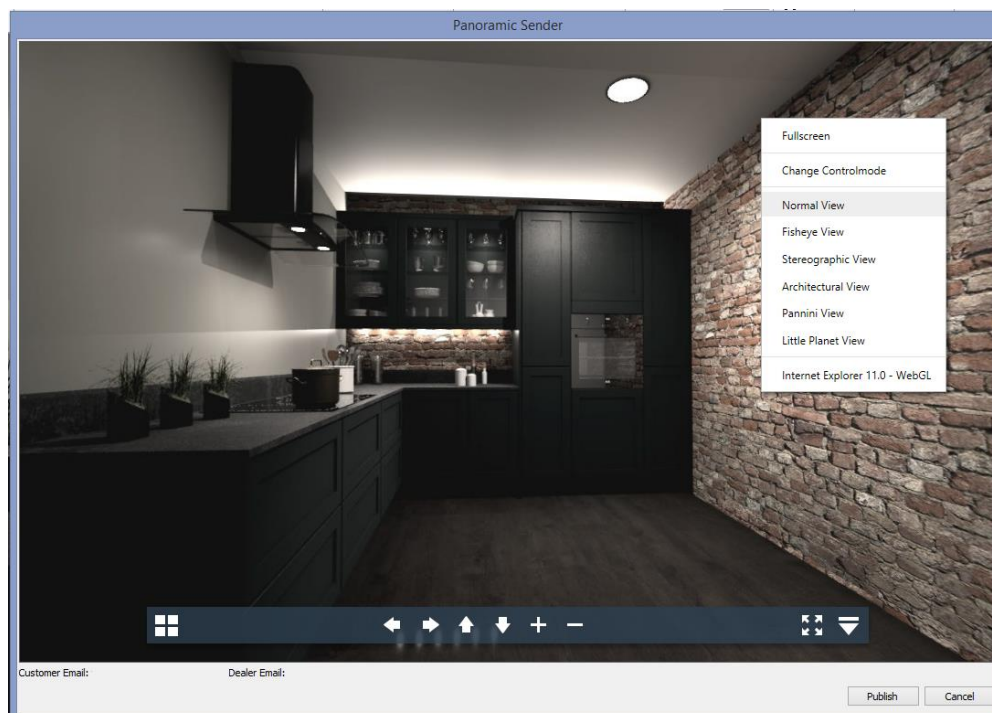
When a recipient views the preview in 2020 Fusion, or when they click onto the resulting URL, they will have several ways of moving from one view point to another – either via the pop-up preview list above the navigation panel, or by clicking onto the corresponding 'view from' targets which will then transport them to the new viewing position.



If a recipient of the 360° panorama is viewing the scene using the 'VR' mode, an additional crosshair is visible which, when aligned to one of the additional view point targets, allows them to move easily between available view points without needing to touch the screen.

Ability to Define the Default 'View Type' of a Generated 360° Panorama (v7.0)

When viewing a 360° Panorama, it is possible to do so in a variety of 'view types'; these are: Normal View, Fisheye View, Stereographic View, Architectural View, Pannini View and Little Planet View



In Version 7, a user preference entered directly in the PPPrefs.ini will allow the user to define the default view type displayed when the 360° Panorama is either previewed or when the generated URL is viewed:

[Publish]

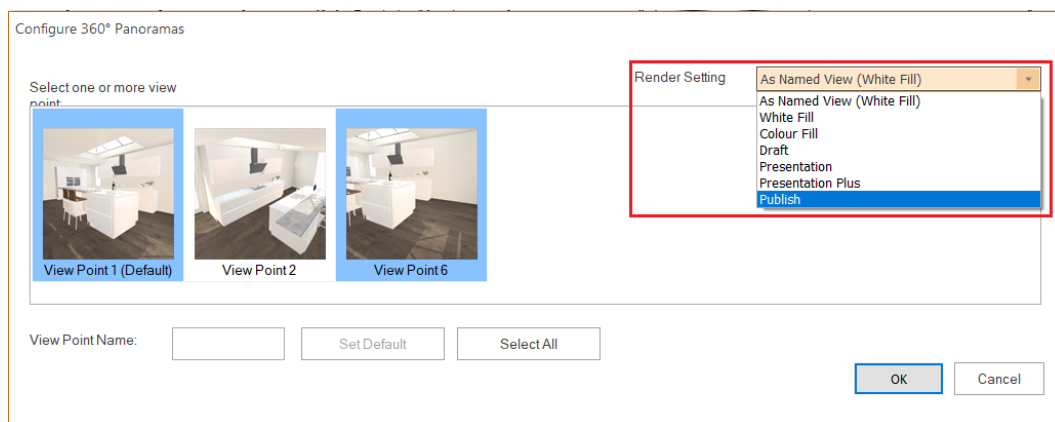
ViewType = "0" (Normal), "1" (Fisheye), "2" (Stereographic), "3" (Architectural), "4" (Pannini), "5" (Little Planet)

If the preference has not been defined, then the 'Normal' view type will continue to be the default displayed.

360° Panorama: Ability to Select Render Quality (v7.2)

2020 Fusion's printing and export functionality already allows a user to generate one render quality 'on screen' but then to print or export to a different render quality. The most common benefit of this capability is that a user is not obliged to generate a high-quality render on screen first before printing or exporting the view, thereby saving them a great deal of time in the overall process.

In Version 7.2 this same concept has been extended to the generation of a 360° Panorama, through the addition of a drop-down menu on the 'Configure 360° Panorama' dialog. As such, this allows the designer to choose a render quality that differs from the one that is applied to the currently active named view.



However, please note that it is not possible to commence the creation of a 360° Panorama with a wireframe render on screen, as this still remains an unsupported export option.

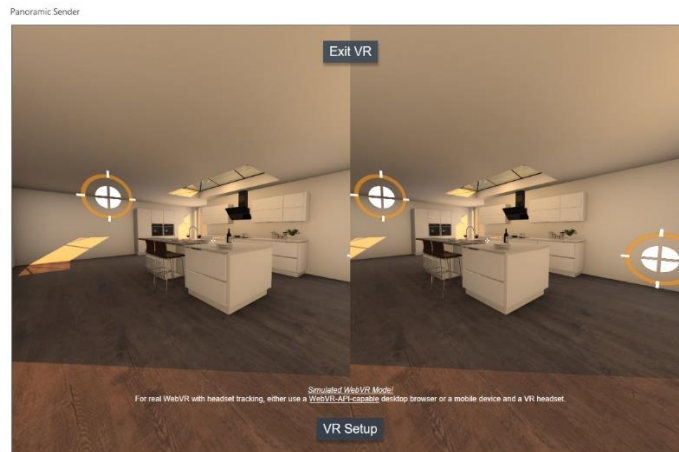
360° Panorama: Expose 'VR' Option in Browser Interface (v7.2)

Since the feature's original implementation, it has only been possible for a user to view 360° Panoramas using smartphone compatible viewers/goggles. With the advent and availability of VR hardware such as HTC Vive and Microsoft Windows Mixed Reality, a number of customers have asked for the 360° Panorama output to also be made accessible to such devices.

With effect from Version 7.2, it is now possible to change to a split screen 'VR' mode within the 360° Panorama preview, simply by clicking on the corresponding icon:



When clicked, the preview will change to the split screen format required by the VR device.



Please note that this new functionality only extends to the viewing of multi-point 360° Panoramas from a series of fixed points and the movement from one fixed point to another when using such 'VR' devices (entirely consistent with the existing behaviour for the smartphone based solution); it does not also extend to free movement/navigation within the 360° Panorama itself.

Wavefront (.OBJ) Exports to Include Reflectance and Roughness Properties (v7.2)

From version 7.2 onwards, the content included in the Wavefront (.obj) export file has been extended to also include information relating to the reflectance and roughness of design items.

360° Panorama Solution: Support for iOS 13 (v6.5/v7.2/v7.3)

Earlier this year, Apple released the iOS update 12.2 in which they introduced new security features which, by default, prevented the gyroscope (motion detection) from working with 2020 Fusion 360° Panoramas in the 'Safari' browser. On that occasion, the workaround was simply for the end user to enable motion & orientation access in the Safari settings for a given device.

From September this year, Apple released the iOS 13 update, in which motion and orientation was, once again, disabled as a default in Safari. However, on this occasion, Apple did not provide an option in the Safari settings to enable motion and orientation and, as a result, users were not able to restore this permission generally.

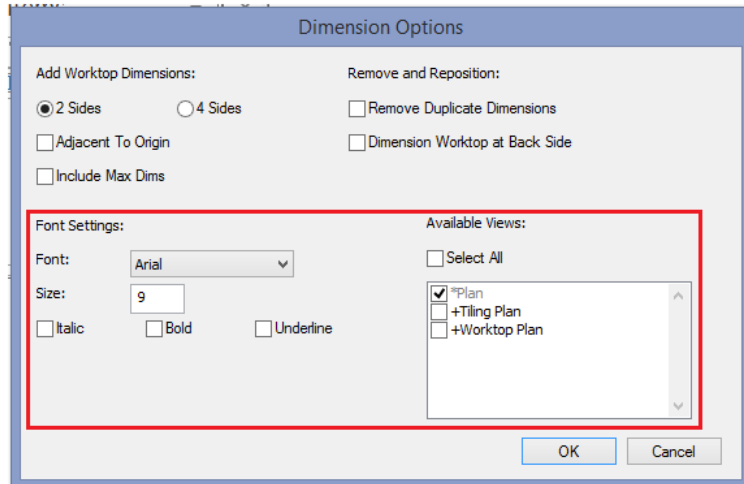
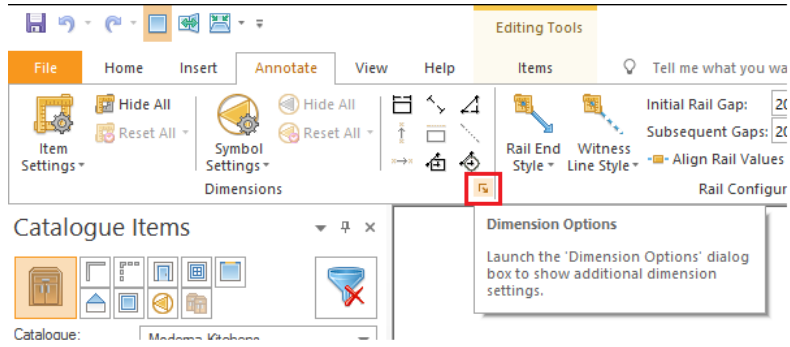
In Version 7.3, we have updated the solution in response to this change, which now results in the end user being automatically prompted to allow 2020 Fusion 360° Panoramas to access their device's motion and orientation capabilities when the link is clicked upon.

Dimensioning

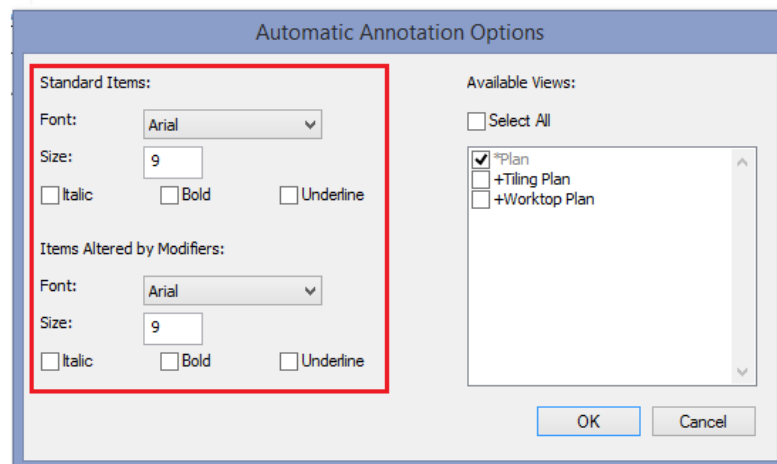
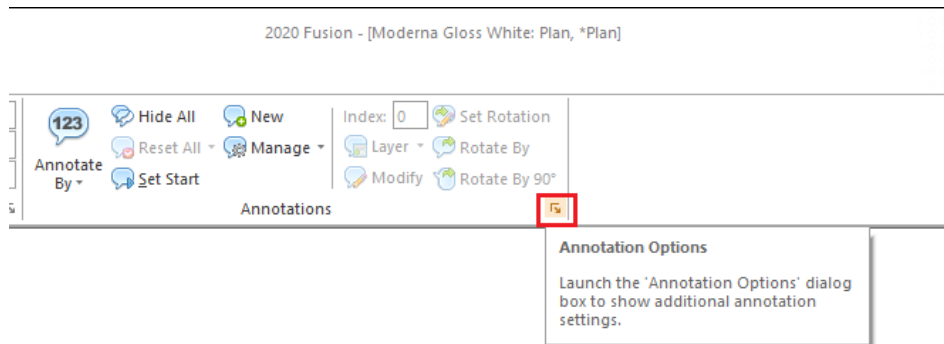
Ability to Change Dimension & Annotation Font Attributes for Existing Designs (v7.0)

2020 Fusion has the ability to define default font sizes and other related settings for automatic dimensions and annotations in its 'Options' area. However, In Version 6 and earlier, once a design was created, these defaults could not be changed. In Version 7, the user is now able to change these for an existing design on a 'per named view' basis, thereby providing them with full flexibility to make adjustments as required in any of their plan or elevation named views.

Modify Auto-Dimensions



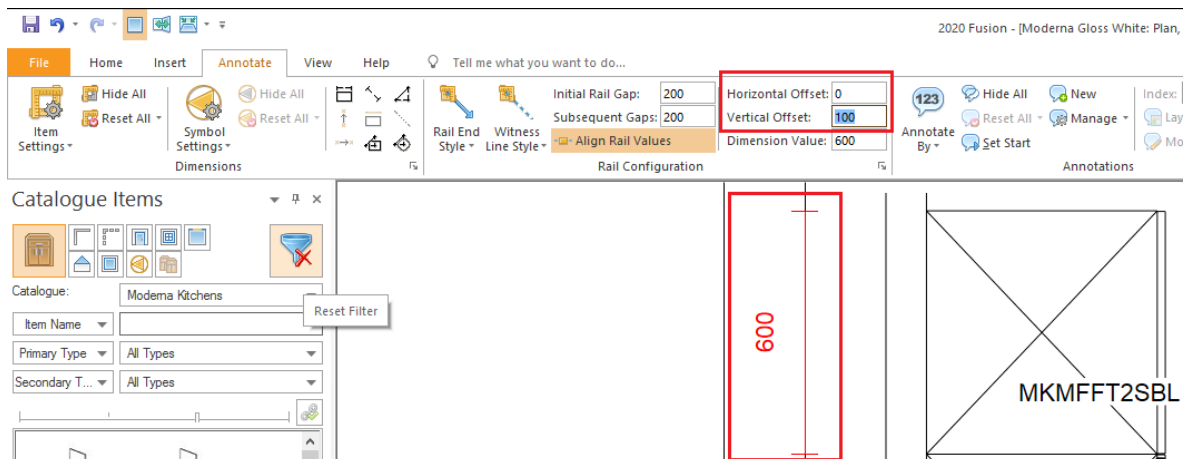
Modify Auto-Annotations



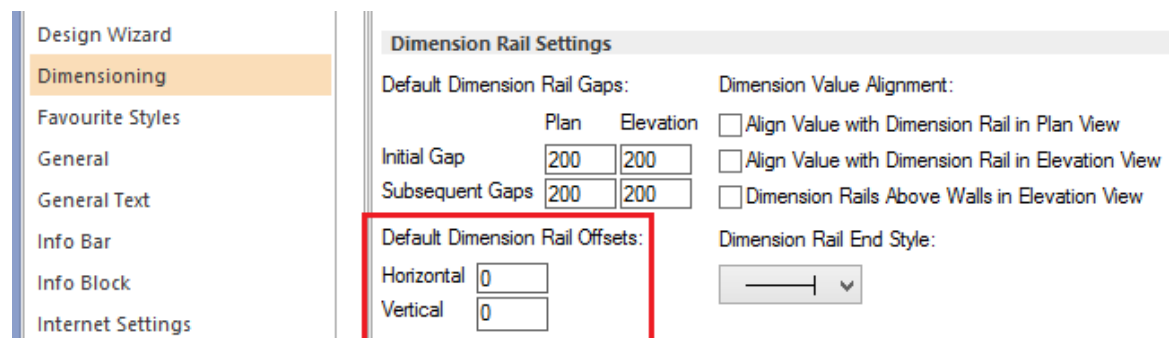
Dimension Rail Offsets to be Relative to the Rail Itself (v7.0)

2020 Fusion's dimensioning system includes functionality allow a user to apply an offset to the values displayed on a dimension rail; users might apply an offset to aid visibility in a particularly 'crowded' area of a design. Offsets can be applied in each of the horizontal and vertical planes. However, in previous versions, the concept of horizontal and vertical was only in relation to the origin of the design – this was not easily understood and made it especially difficult to apply accurate offsets to angled dimension rails.

In Version 7 onwards, the concept of horizontal and vertical offsets is now in relation to the dimension rail itself, thereby making it much easier to apply offsets accurately.



In addition, it is also now possible to enter default offset values for dimension rails in the 2020 Fusion's 'Options'.

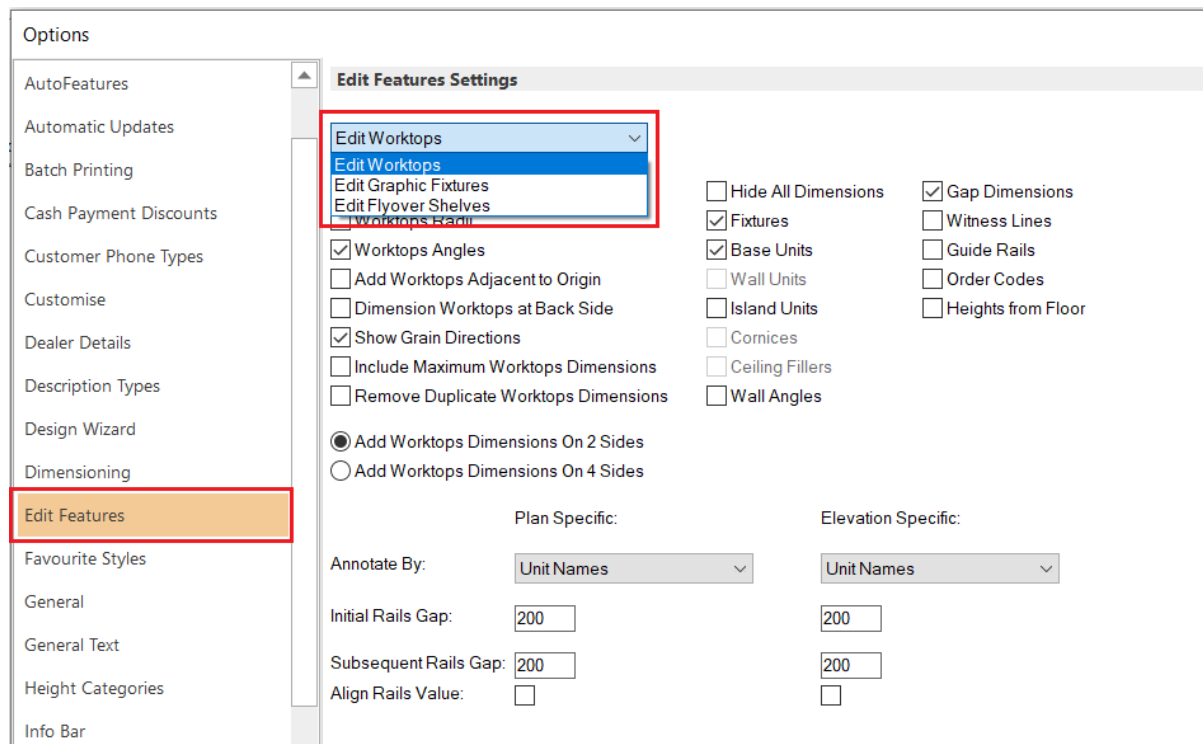


New Dimensioning and Annotations Solution for Edit Worktops, Edit Fixtures and Edit Flyover Shelves (v7.2)

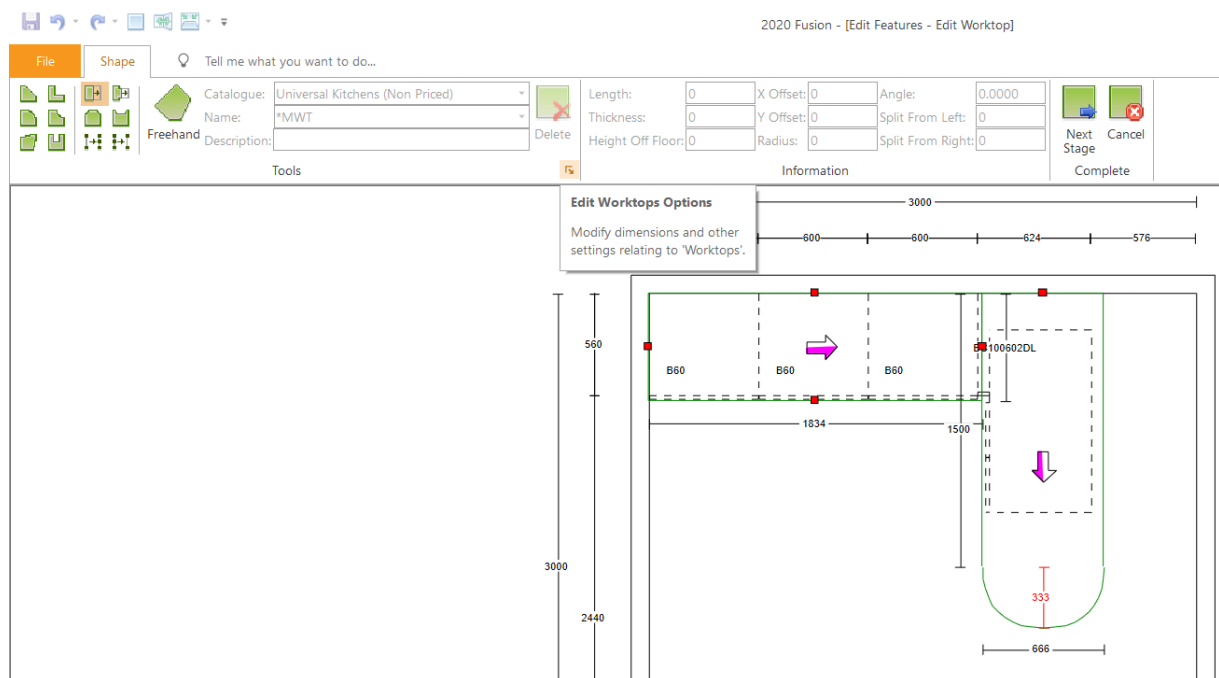
In previous editions of 2020 Fusion, it was not possible to show worktop dimensions, grain direction (as standard) and automatic annotations whilst in the Edit Worktops modal ribbon/view. Similar restrictions also applied to Edit Fixtures and Edit Flyover Shelves. This was a source of great frustration to designers, as it was only possible to double-check that the correct values had been applied upon returning to the standard plan or elevation views.

Version 7.2 now facilitates a full range of configuration options for the display of dimensions and annotations in each of these modal ribbons/views. A new section of 2020 Fusion's 'Options' called 'Edit Features' has been added, in which users are able to preconfigure their default dimensioning and

annotation preferences for each of the Edit Worktops, Edit Fixtures and Edit Flyover Shelves modal ribbons, which are now essentially managed as independent named views. In the case of Edit Worktops, the default settings also apply to the display of grain direction and other worktop specific options.



The defined preferences will be applied by default each time the user enters each of these respective editing modes for the first time. Whilst working in these views, dimensions and annotations are updated automatically once any relevant editing action has been confirmed (e.g. via pressing 'tab', 'enter', or the corresponding button in the interface).



Note: In terms of the design item layers that are displayed when entering the Edit Worktops/Edit Fixtures/Edit Flyover Shelves modal ribbons/views, these will be based upon what is displayed in the default main view (e.g. *Plan). So, for example, hiding the decorative items layer in *Plan before entering Edit Worktops will present a less cluttered view, making it even easier to apply cuts and joints.

As with any of the conventional named views, it remains possible to override any of the default dimension settings for that specific named view by clicking on the 'Options' button in the bottom right hand corner of the 'Tools' panel; this button is accessible at each stage of the editing process.

Changes made in this area are applied to current design/modal named view only; should the user wish to change the defaults for new designs, these must be undertaken in the 'Edit Features' area of 'Options'.

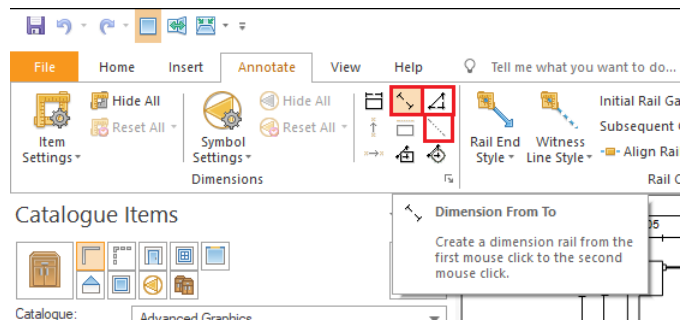
Note: The Edit Worktops, Edit Fixtures and Edit Flyover Shelves named views are not accessible in any other part of the 2020 Fusion application – e.g. 'Export' or 'Print'.

Use 'Snap to Angle' for Selected Manual Dimensioning Modes (v7.3)

A number of 2020 Fusion's functions, such as measurements, employ a 'snap to angle' concept – meaning that when the beginning of a line is drawn it will default to snapping at angle increments defined in the 'Snap Angle' preference, found in the 'General' section of 2020 Fusion's 'Room Defaults' options.

In an effort to ensure that behaviour is consistent across the entire application, the following manual dimension creation tools will now be subject to the same angle snapping preferences during the line creation process:

- 'Dimension From To'
- 'Dimension Right Angles'
- 'Guide Rail From To'

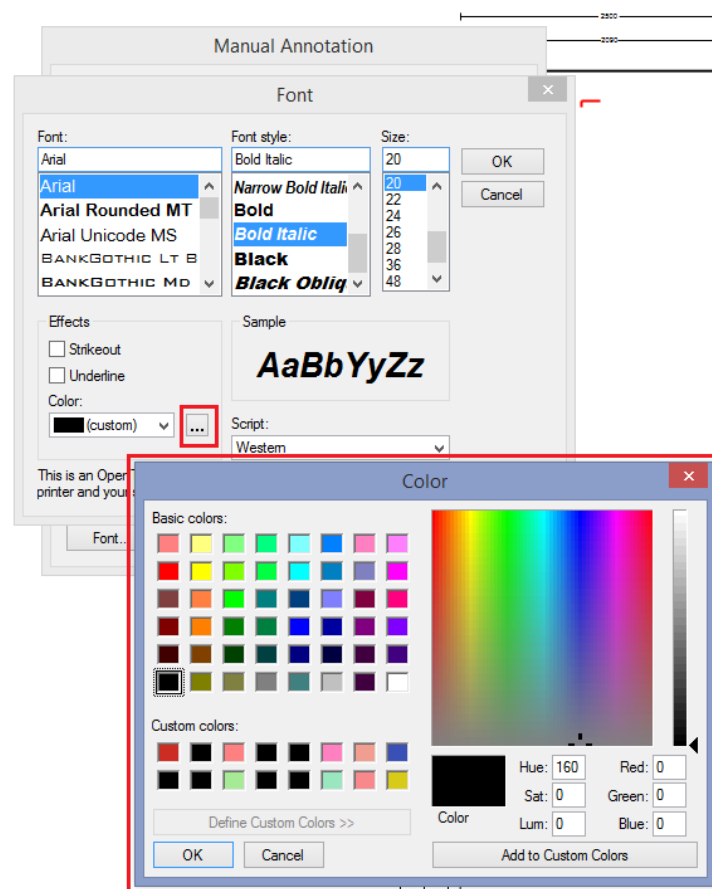


This means that the line being created by the above tools will now snap to an angle in degree increments, based on an existing 'Snap to Angle' preference. Pressing the 'Ctrl' key will override this, as per the other similar functions.

Annotation

Manual Annotations: Ability to Choose/Define Any (Text) Font Colour (v7.0)

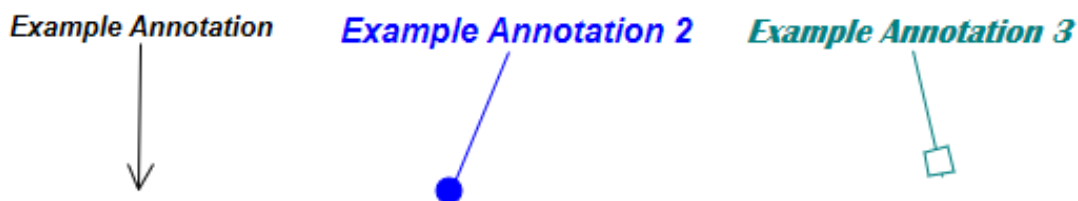
Before now, the designer was restricted to a predefined list of manual annotation colours which may not have reflected their own personal taste or, indeed, their company's corporate identity. Now, in Version 7, the user can create, save and recall 'custom colours' for their manual annotation via the standard colour mixing palette, also familiar in other areas of 2020 Fusion.



Custom font colours will not only be retained for the existing design but, once created, will also be available for use in other designs.

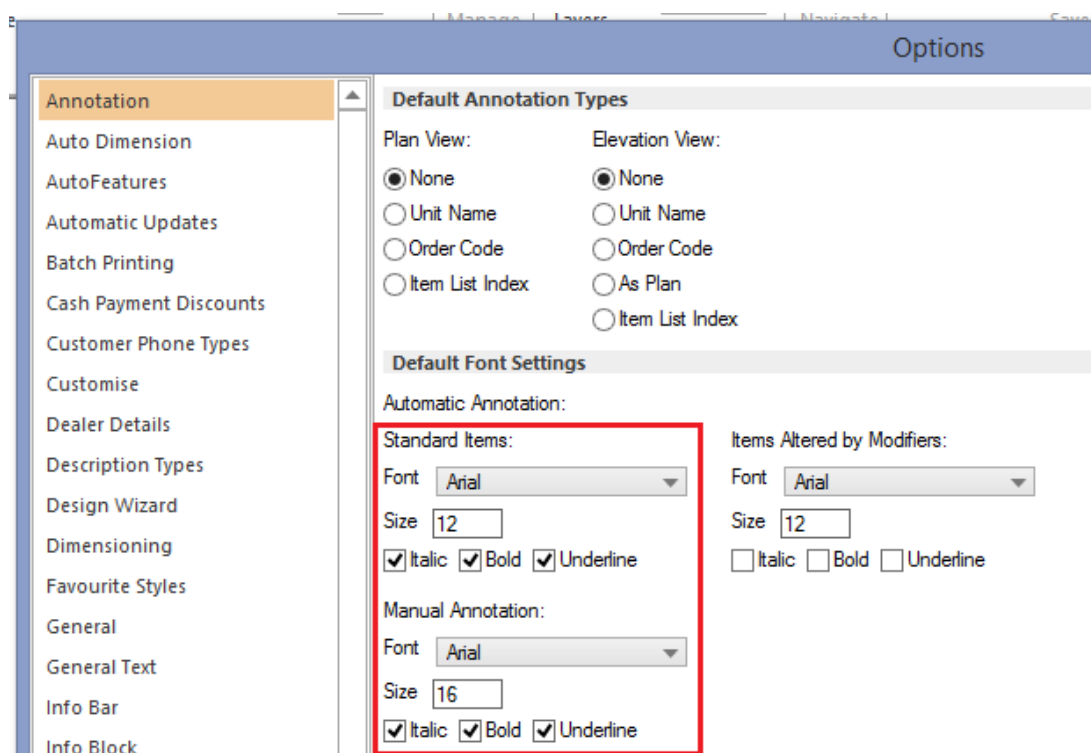
Annotation Lines to Use the Same Colour as Text (v7.0)

In previous versions of the application, if the user added an arrow to a piece of annotation then it would always be black, regardless of the font colour chosen for the annotation. Now, in Version 7, the colour of the arrow/line will also be the same as that of the annotation itself.



Separate Default Font Preferences for 'Standard Items' and 'Manual Annotation' (v7.0)

Previously, it was only possible for a designer to define joint annotation defaults for the auto-annotation of standard items (previously described as 'items unaltered by modifiers') and for manual annotation. It was recognised that end users may wish to use different font settings for each of these and, as such, they have now been split into two separate sets of defaults.

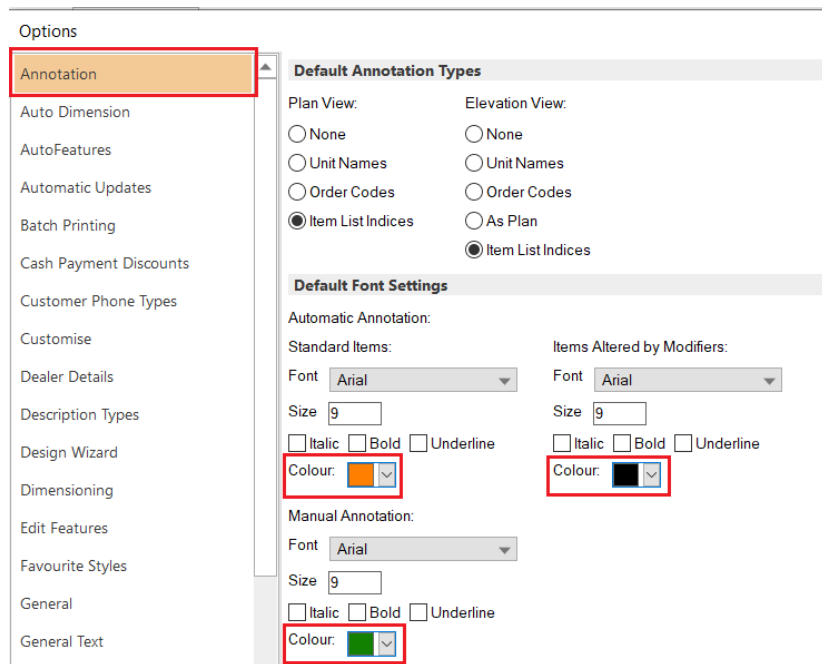


Any settings previously defined by a user in earlier versions of 2020 Fusion for the joint default preference will be applied to both sets of preferences upon upgrading to Version 7.0 or later.

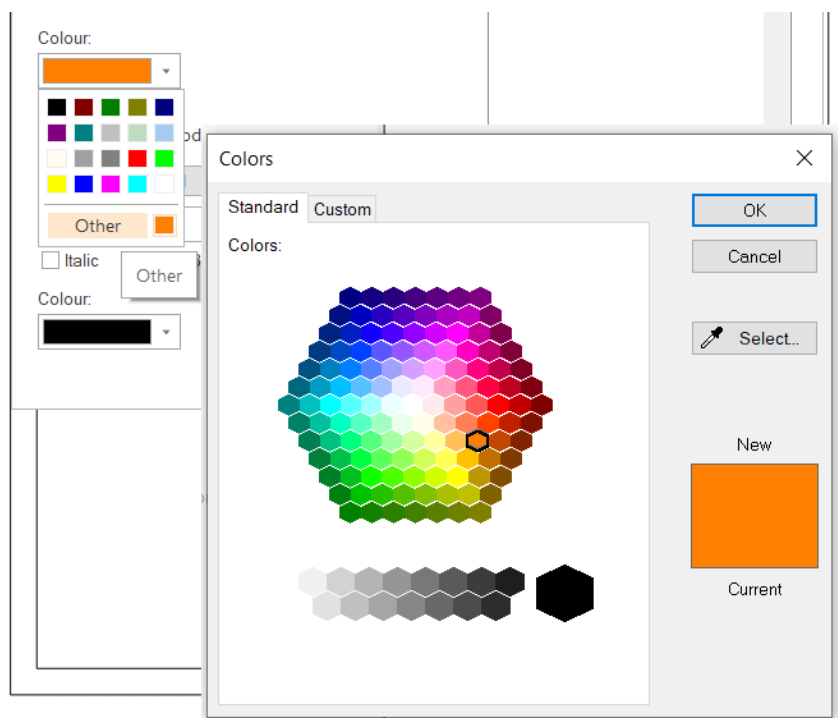
Ability to Define Default Colours for Annotations (v7.2)

In previous versions of 2020 Fusion, it was possible to set various default font attributes for each of the automatic annotation for standard items, automatic annotation for items altered by modifiers and for manual (user-defined) annotations – this included the default font type, style and size in each case.

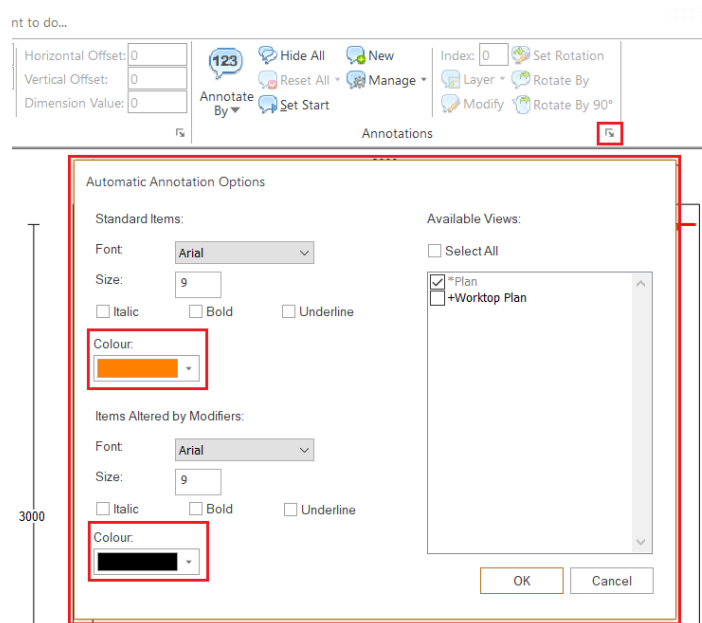
In Version 7.2 onwards, it is now also possible to define the default font colour for these three different forms of annotation, with new interface being added to the 'Annotations' section of 2020 Fusion's 'Options'.



The default colours can either be chosen from a predefined list, or the user can create their own custom colour.



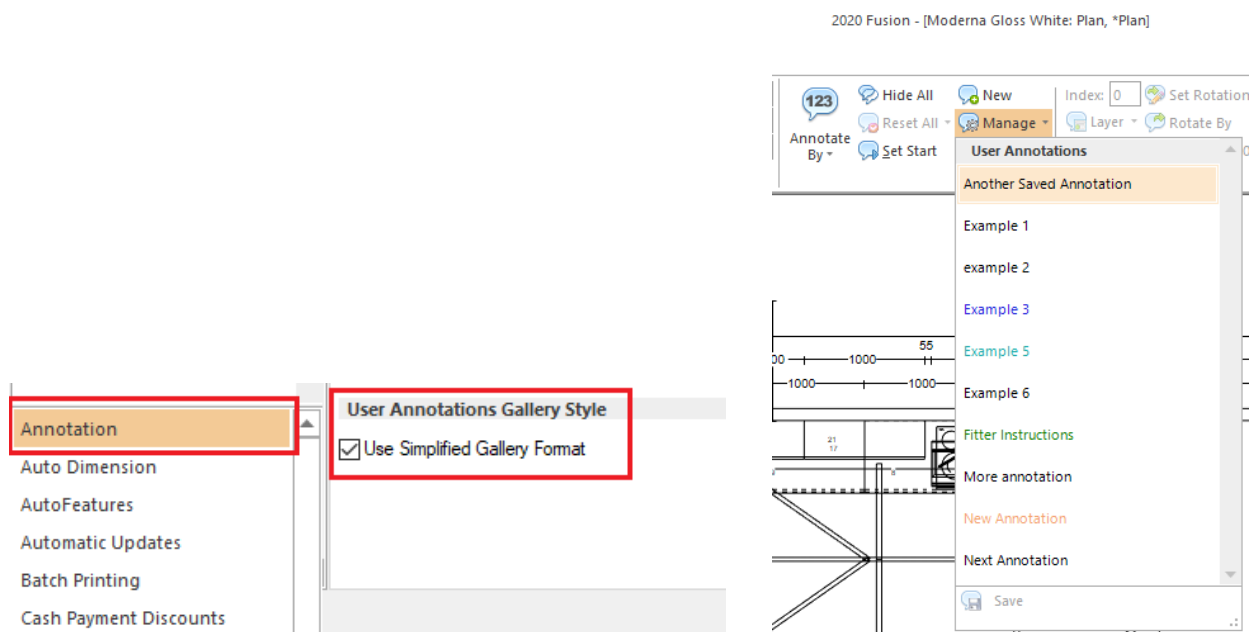
If required, any of the automatic annotation defaults - including the newly added colour options - can be overridden on a per named view basis in a given design; this is done by clicking on the 'Annotation Options' button in the corner of the 'Annotations' panel of the 'Annotate' ribbon.



'Manage' Manual Annotation: Simplified Gallery View (v7.3)

Many designers create, save and recall numerous manual annotations for use in future plans. Currently, all saved manual annotations are displayed in the form of a 'gallery' in which a preview is displayed of each one, indicating both the font properties and textual content. Some users feel that this takes up too much screen estate and that they would prefer a simpler presentation format.

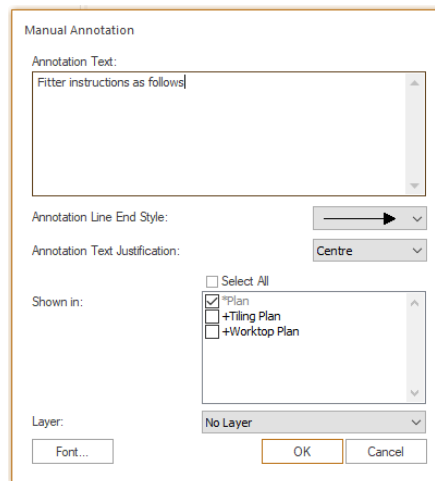
In Version 7.3 onwards, a user accessible preference can be set to provide an alternative viewing format for the user annotations gallery:



Setting this preference results in the saved manual annotation gallery showing less information for each annotation and, by extension, allows more entries to be viewed at the same time.

Option to Suppress the Dialog when Adding Saved Manual Annotation (v7.3)

When any piece of manual annotation is added to a design, the user is prompted with the following dialog, providing them with a variety of configuration options ranging from the font properties, to deciding the view(s) in which it will be applied.



In the specific case of applying *saved* manual annotation, some users feel that this dialog is superfluous at the point of addition, given that a majority of the information has already been defined when it was saved. For such users, a hidden preference has been made available (to be entered directly into the PPPrefs.ini file under the [Customise] heading) which will suppress the generation of the dialog when initially adding saved manual annotation.

[Customise]

SuppressAddUserAnnotationPrompt = "1"

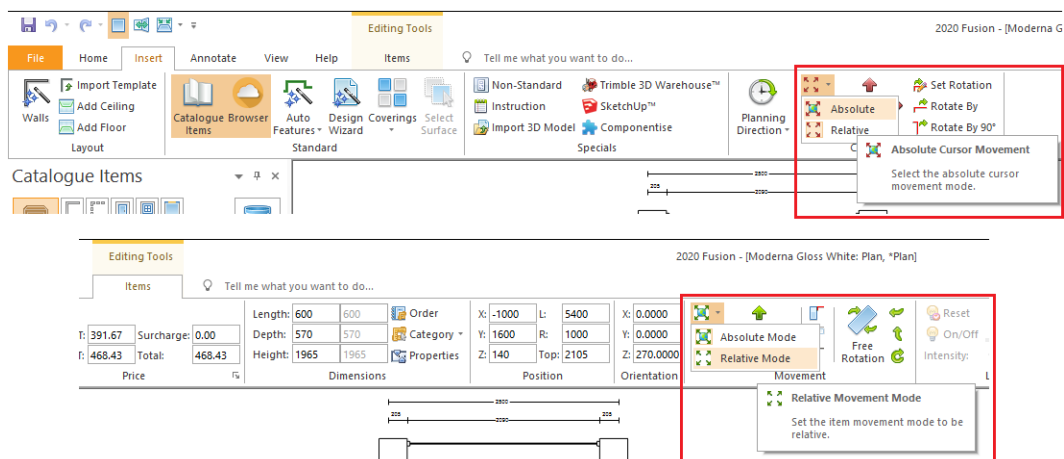
Note: the dialog will continue to always appear when adding a brand new (i.e. not previously saved) piece of annotation, or when editing a piece of annotation already added to a design.

Design Creation

Sticky Cursor and Item Movement Modes (v7.0)

In previous versions of 2020 Fusion, the 'Absolute'/'Relative' movement modes for cursor and item movement always defaulted to 'Absolute' whenever creating a new design or reopening an existing one.

Now, in Version 7, the selected movement mode for each of these will remain 'sticky' across all designs and planning sessions, meaning that one's preferred method is always retained unless explicitly changed.



Prompted Height Categories for 2020 Cloud Items (v7.0)

When certain products of a given type are added from a 2020 Cloud catalogue for the very first time, the user will be prompted to assign a default value for the 'addition height' for such items.



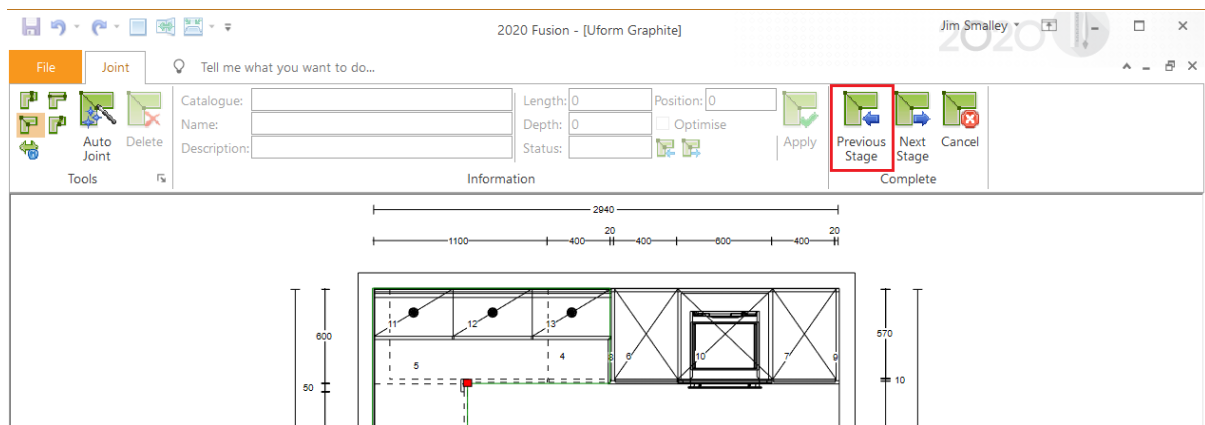
Upon confirmation, the value entered will be saved to a preference file and then reused when any such similar items are added from the same catalogue, thereby avoiding the need for the user to be prompted again. Should the user need to modify the value, then this can be done on a per design basis in the 'Catalogue Information' section on the 'Home' ribbon, or via a new section in the 'Options' area called 'Cloud Height Categories', if they wish to modify the default value for all designs.

Note: this system will only apply to any new height categories not previously recognised in Version 6 or earlier.

Edit Worktops: 'Previous Stage' Option (v7.2)

2020 Fusion's 'Edit Worktops' functionality comprises four separate stages – 'Shape', 'Joint', 'Edge' and 'Link'. In previous versions, passing through these stages was a linear process in which – once a given stage was completed – a user could only return to it by re-running Edit Worktops.

Version 7.2 sees the addition of a 'Previous Stage' button to each of the Joint, Edge and Link stages, which allows a user to go back to any of the previous stages without having to re-run Edit Worktops.



Note: when the 'Previous Stage' button is selected, any changes being made in the current worktop editing stage will be discarded.

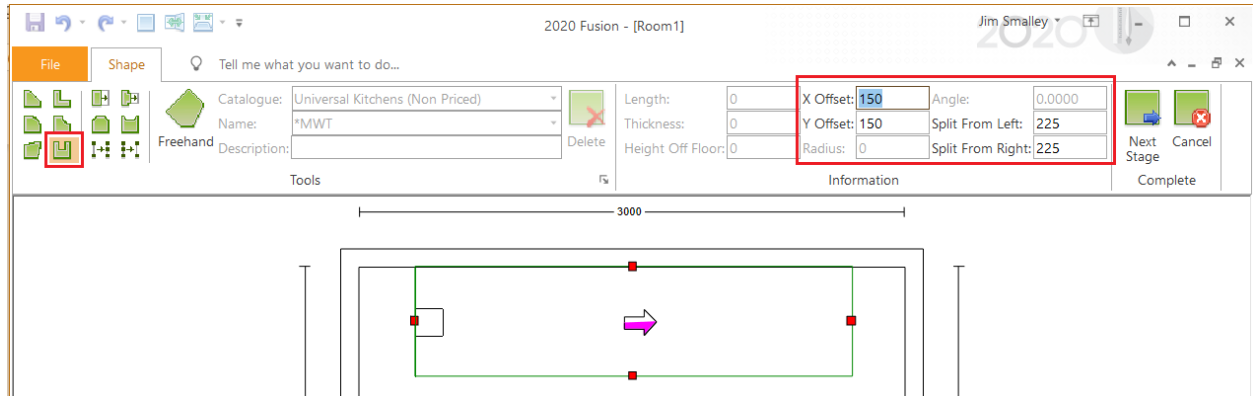
Edit Worktops: Cycle Edge Handle Selection by Keyboard (v7.2)

Another keyboard shortcut has been added to the 'Edge' stage, allowing users to select individual edge handles without having to actually click onto the required handle using the mouse.

Pressing *Ctrl+Right arrow* (clockwise) or *Ctrl+Left arrow* (anticlockwise) on the keyboard allows the user to cycle through each edge handle in turn.

Edit Worktops: Addition of Triple Cut Functionality (v7.2)

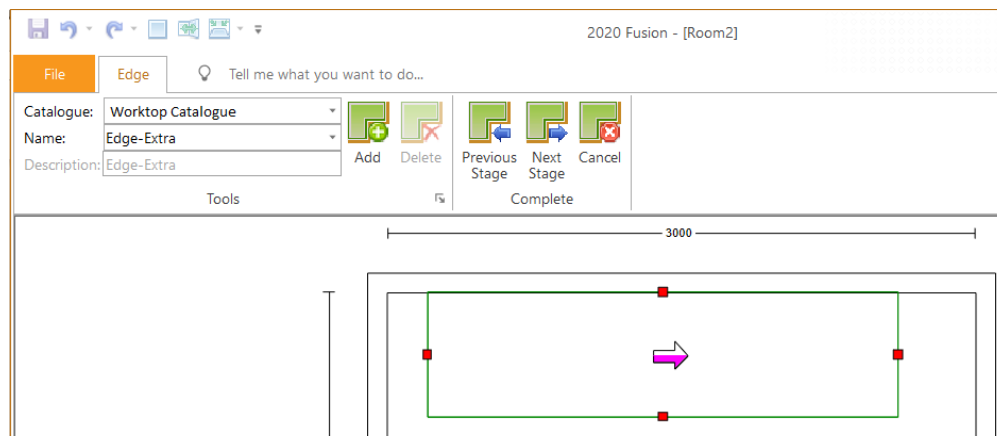
A 'Triple Cut' shaping option has been added to range of editing tools available in the 'Shape' stage of Edit Worktops. This functionality is consistent with that which is already available to 2020 Fusion designers in the Advanced Surface Covering area of the product, allowing the user to click on a given handle and define the length and depth of the cut, as well as the distances from the left and right ends of the side being shaped.



Note: this functionality has also been added to the corresponding plan view tools for 'Edit Graphic Fixtures' and 'Edit Flyover Shelves'.

Edit Worktops: Select All Functionality for Edit Worktops Edge Handles (v7.2)

At the 'Edge' stage of Edit Worktops, many users would generally want to apply the same edge type to all of the edges of the worktop. With this mind, this stage now supports the use of the 'Select All' (*Ctrl+A*) keyboard shortcut, thereby overcoming the need to click onto each individual edge handle in turn.



Edit Worktops: Ability to Configure Handle Sizes (v7.2)

A number of hidden preferences have been added to 2020 Fusion, allowing a user to modify the size of the various 'handles' presented during each of the Edit Worktops stages. As there is no user interface to these preferences, they must be entered directly into the PPPrefs.ini or PPPrefs_Override.ini files.

Please note that the existing default handle sizes will continue to apply in the absence of any of these new preferences being entered.

Specific details of the handle size preferences can be found the 2020 Fusion 'Prefs Spec' document that accompanies all releases.

Support for Trimble SketchUp 2019 (v7.2)

In line with Trimble's release of SketchUp 2019, 2020 Fusion now supports the import of models created using this version of SketchUp.

In addition, 2020 Fusion's 'Export to SketchUp' function has been upgraded to export to this latest edition.

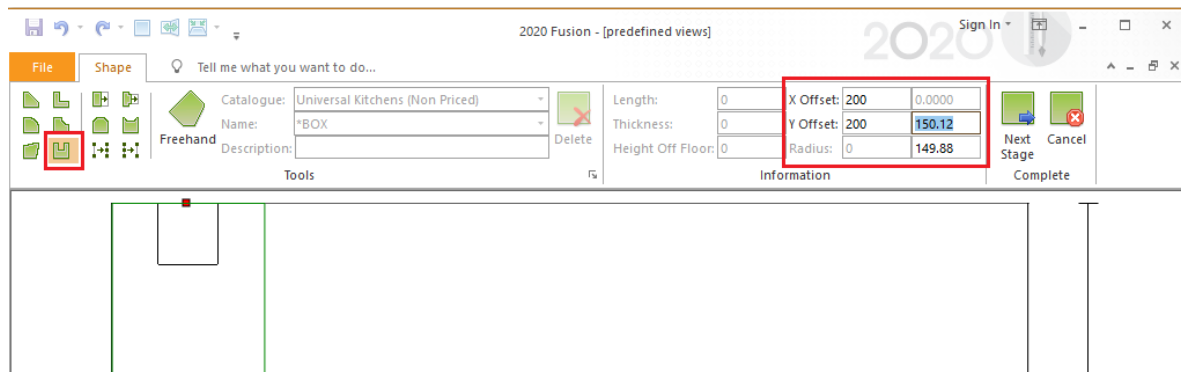
Support for Trimble SketchUp 2020 (v7.4)

In line with Trimble's release of SketchUp 2020, 2020 Fusion v7.4 now supports the import of models created using this version of SketchUp.

In addition, 2020 Fusion's 'Export to SketchUp' function has been upgraded to export to this latest edition effective from this version onwards.

Support For Triple Cut In Elevation View (Edit Graphic Fixtures) (v7.4)

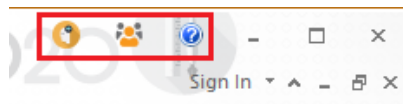
In Version 7.2, a 'Triple Cut' option was added to the plan-view based shaping tools for 'Edit Worktops', 'Edit Graphic Fixtures' and 'Edit Flyover Shelves'. In Version 7.4, this functionality has been extended to now also allow a triple cut to be added when editing a graphic fixture (e.g. a *Box) in the elevation view.



User Interface/User Experience

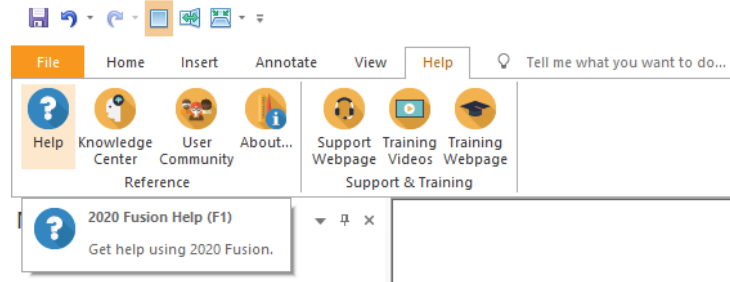
2020 Fusion Help Ribbon (v7.0)

In older versions of 2020 Fusion, access to the application's online help system, the 'User Community' and the 'Knowledge Center' was possible by clicking onto the corresponding entries on the right-hand side of the application title bar:



In Version 7.0, the user interface has been updated in alignment with similar changes made in MS-Office 2016, which has specifically resulted in the addition of a dedicated 'Help' ribbon and the relocation of the above entries to the ribbon itself.

Other additions include an easy to access 'About' button, direct access to the Support and Training pages of the 2020 Spaces website and a link to the 2020 Fusion training video channel on YouTube.



Improved Mouse Wheel Controlled Zoom and Drag Functionality (v7.0)

Further optimisations have been made to the mouse-wheel controlled zoom and drag functionality in 2020 Fusion's graphical views to provide an even smoother and more accurate user experience.

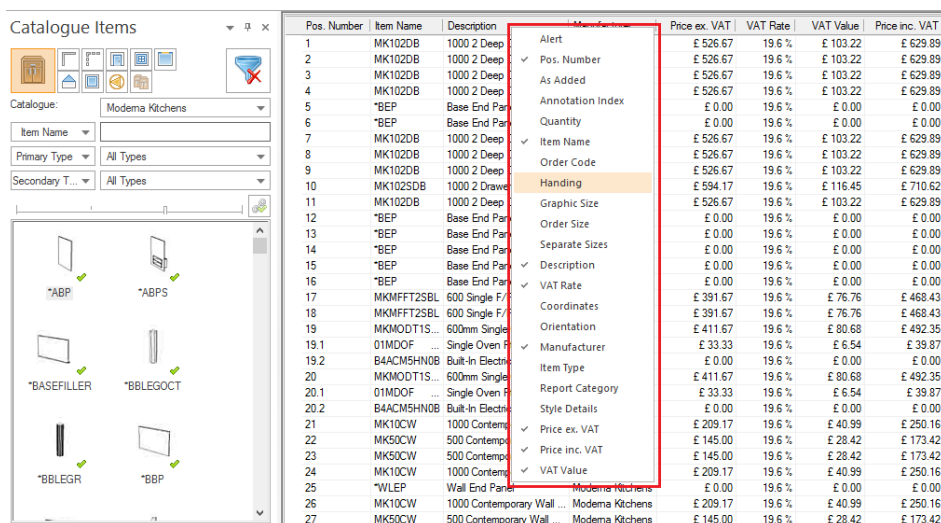
In addition, changes have been made to the logic behind the dragging and orbit functionality to make this behaviour more consistent with similar products (e.g. AutoCAD) or user experiences (e.g. using applications such as Google Maps).



Item List View: Add/Remove Columns via Right Click (v7.0)

2020 Fusion has made it even easier to add and remove column headings in the item list view following the removal of the old 'field chooser' floating palette and the introduction of new functionality, similar to that found in 'Windows Explorer'.

To add a new column heading, the user can now simply right-click on an existing one to show details of those columns already displayed (checked) and to see which additional column headings are available (unchecked). Selecting one of the unchecked options will add that column heading to the immediate left of the one initially clicked upon; selecting one of the checked options will result in the corresponding column being removed from the item list view.

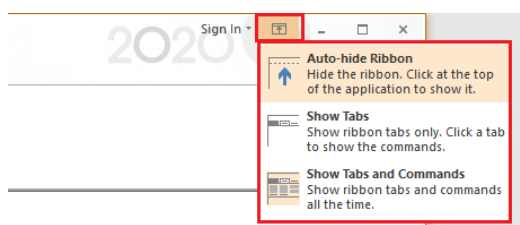


Note: This new functionality has not affected the existing ability to remove or reposition column headings by dragging the headings themselves.

Pos. Number	Item Name	Description	Manufacturer	Price ex. VAT	VAT Rate	VAT Value	Price inc. VAT	
1	MK102DB	Description	Ba...	Modema Kitchens	£ 526.67	19.6 %	£ 103.22	£ 629.89
2	MK102DB	1000 2 Deep Drawer Ba...	Modema Kitchens	£ 526.67	19.6 %	£ 103.22	£ 629.89	
3	MK102DB	1000 2 Deep Drawer Ba...	Modema Kitchens	£ 526.67	19.6 %	£ 103.22	£ 629.89	
4	MK102DB	1000 2 Deep Drawer Ba...	Modema Kitchens	£ 526.67	19.6 %	£ 103.22	£ 629.89	
5	*BEP	Base End Panel	Modema Kitchens	£ 0.00	19.6 %	£ 0.00	£ 0.00	
6	*BEP	Base End Panel	Modema Kitchens	£ 0.00	19.6 %	£ 0.00	£ 0.00	
7	MK102DB	1000 2 Deep Drawer Ba...	Modema Kitchens	£ 526.67	19.6 %	£ 103.22	£ 629.89	

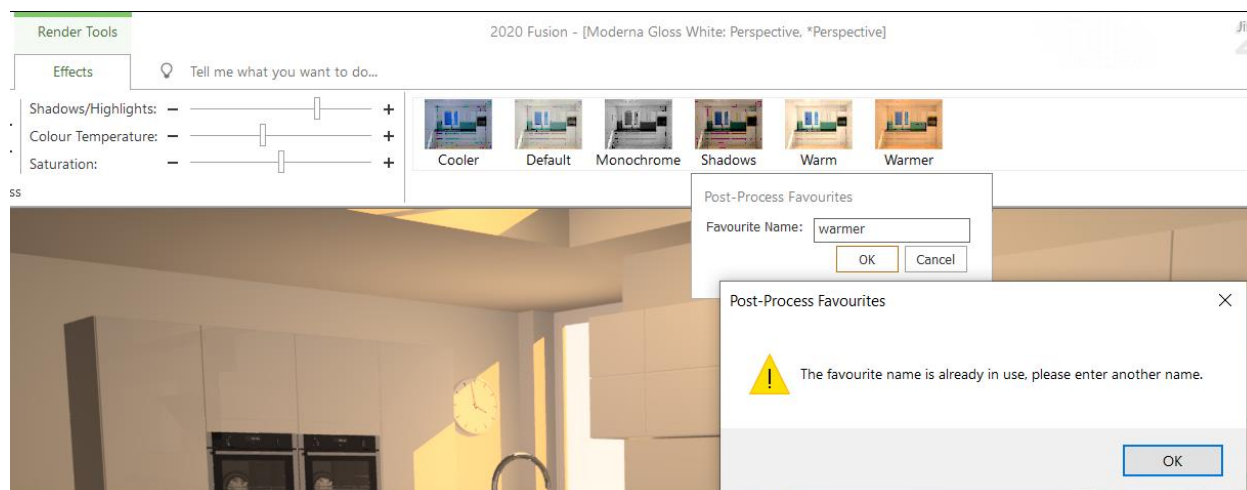
Office 2016 User Interface: 'Auto-hide Ribbon' / 'Show Tabs' / 'Show Tabs and Commands' (v7.0)

2020 Fusion has been updated to offer ribbon controls consistent with Microsoft Office 2016; specifically, the ability to show tabs only, show tabs and commands, or to auto-hide the ribbon when not actively in use.



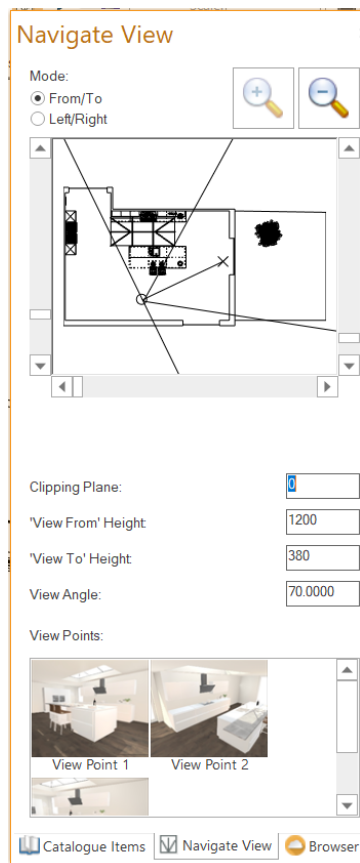
Case Insensitive Naming of Favourite Effects (v7.2)

Further to the implementation of the 'Effects' ribbon in Version 7.0, a change has been made to the rules for naming favourite effects in order to prevent duplicate ones being created – the naming rules will now be case insensitive.



Navigate Palette: Improved Estate Management Logic (v7.2)

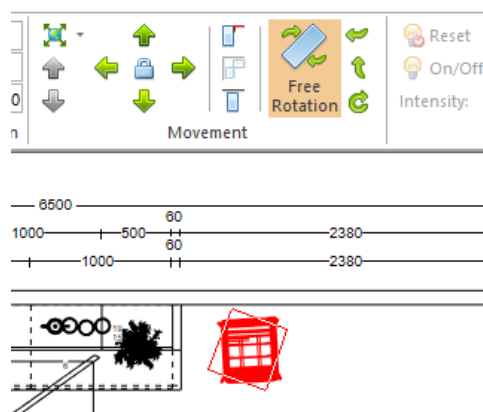
Improvements have been made to the way in which the Navigate palette prioritises what is displayed when either working at a lower screen resolution, or with the palette floating (undocked) and reduced in height. Greater priority has been applied to the four editable fields so that they are the last to disappear from the interface if the palette is made smaller and smaller by the user.



Free Rotation Button to be Highlighted When in Use (v7.3)

In previous versions of 2020 Fusion, the 'Free Rotation' button on 2020 Fusion's ribbon was not highlighted when the user performed this action on design items. This was inconsistent with other tool buttons in the application (such as the 'Measure' tool), which do become highlighted when their action is being performed.

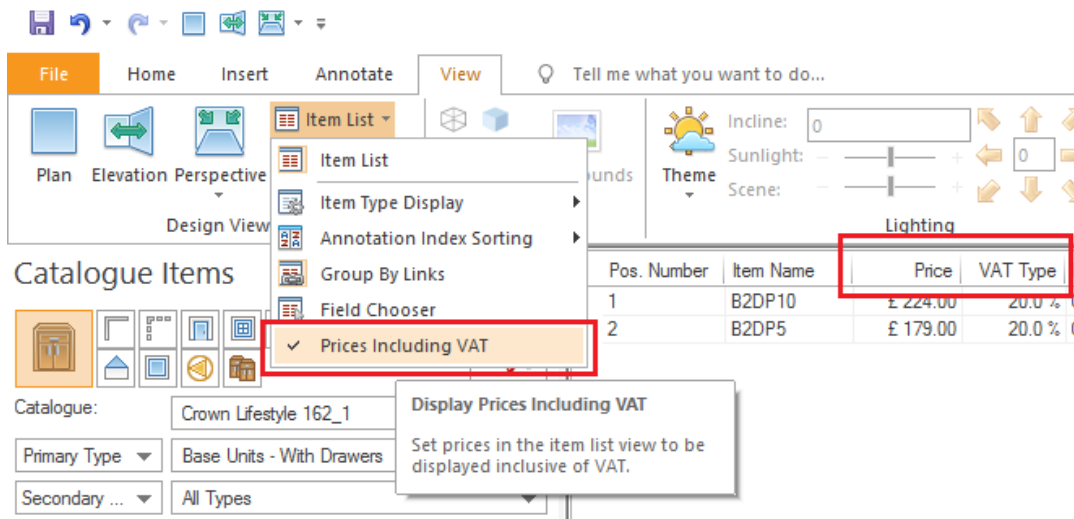
In Version 7.3 onwards, this inconsistency is addressed with the Free Rotation button now being highlighted whenever this action is being performed.



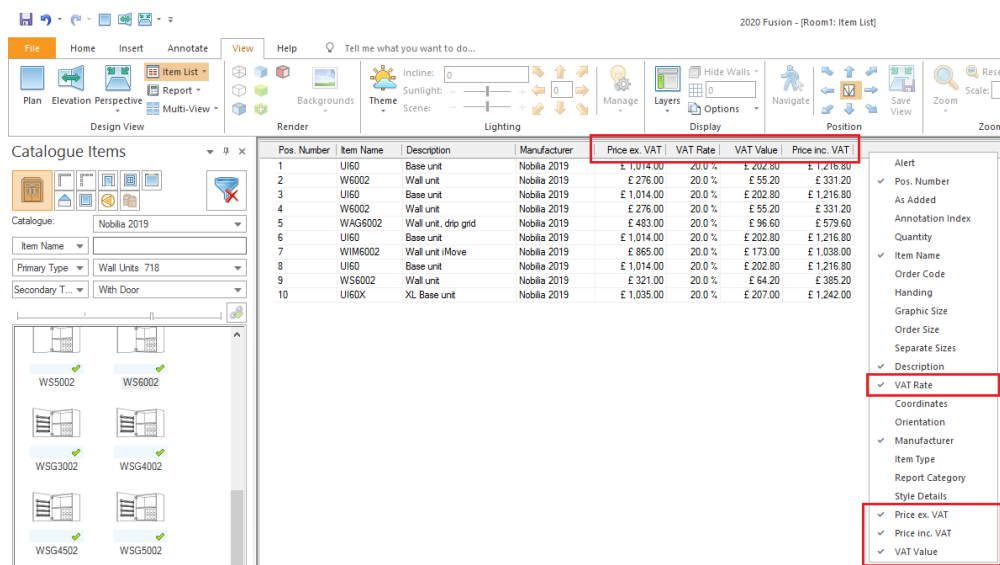
Pricing, Reporting & Ordering

Additional Item List Columns for Pricing (v7.0)

In previous versions of 2020 Fusion, it was only possible to display item prices either excluding VAT, or item prices including VAT in the Item List (column) view; it was not possible to display both at the same time. The interface for this required a 'price' column entry to be added from the 'field chooser' and then for it to be set appropriately via a checkbox located under the item list menu header:



From Version 7 onwards, the interface has been improved – meaning that it will not only be possible to display both the item price excluding VAT and the item price including VAT via new and modified 'field chooser' entries, but it will also be possible to display the actual VAT value (i.e. the price including VAT less the price excluding VAT) as well as the rate of VAT itself.



With this change, the 'Prices Including VAT' option under the 'Item List' menu header is now redundant and has been removed.

Users upgrading from Version 6.5 and earlier will have their existing settings migrated and reflected appropriately in the new interface – i.e. whether a price column is shown or not and, if it is, whether the 'Ex. VAT' entry or the 'Inc. VAT' entry is applied.

Show Catalogue Preview Images in Report Wizard Reports (v7.0)

New functionality has been added to Report Wizard reports which will allow a user to add the 'Catalogue Items' preview image to the Unit Listing section.

Report Wizard

Unit Listings
Please specify any unit information that you wish to appear on the report

Global Settings | Customer Details | Manufacturer Details | Style Information | Height Information | **Unit Listings** | Totals, Discounts | Layout Config

Font Settings
Title: Aa Entry: Aa [Add Section] [Remove Section]

Design Items

Listing Title
Design Items

☐ Inherit From Previous Listing

Value	Label	Column Width
<input checked="" type="checkbox"/> Preview Im...	Preview	20mm
<input checked="" type="checkbox"/> Order Code	Order Code	Variable
<input checked="" type="checkbox"/> Description	Description	Variable
<input checked="" type="checkbox"/> Item Ex VAT	Item Ex VAT	Variable
<input checked="" type="checkbox"/> Handling	Handling	Variable
<input type="checkbox"/> Unit Name		
<input type="checkbox"/> Price Inc VAT		
<input type="checkbox"/> Item Inc VAT		
<input type="checkbox"/> Price Ex VAT		
<input type="checkbox"/> Pos		

☐ Repeat For Each Manufacturer
☒ Report All Manufacturers

Display Categories
☒ Kitchen Unit
☐ Bedroom Unit
☐ Bathroom Unit
☐ Decorative
☐ Worktop
☐ Sanitary Ware
☐ Appliance
☐ Accessory
☐ Table & Chair
☐ Cupboard
☐ Service
☐ Fitting
☐ Default

Options
☐ Show Subtotal Inc VAT
☐ Show Subtotal Ex VAT
☐ Mark Zero VAT Items
☐ Group By Links
☐ Show Linked Items From Different Manufacturers
☐ Show Sub Item Prices
☐ Collate Duplicate Items
☐ Mark 'Changed' items
☐ Show Fixtures
☐ Show Graphic Items
☐ Show Non-Standards
☐ Show Variable Dimensions As Part Of Description
☐ Show Alternative Unit Section
☐ Show Only Alternative Units
☐ Show Trade Block (if relevant)
Sort Category
None

[Help] [Previous] [Next] [Finish] [Cancel]

The preview image that is displayed in the report can be set to any size and position.

Design Items	Order Code	Description	Item Ex VAT	Handling
Preview	MK102DBrc	1000 2 Deep Drawer Base Unit	£ 526.67	
	MK102DBrc	1000 2 Deep Drawer + Top Internal Drawer Base Unit	£ 610.00	
	MK50WLRc	500 Single Wall Unit LH	£ 171.67	Left
				

Note: This functionality currently only extends to the preview images used for file-based catalogues.

Improved Management of Images in Report Wizard Reports (v7.0)

In 2020 Fusion, the user can link or embed images or watermarks in Report Wizard reports, for example to incorporate their company or manufacturer's logo. In Version 7.0, 2020 Fusion has improved the way in which the imported image is managed in terms of ensuring that its quality level is maintained as best as possible when resizing it to fit in the space given.

This has been achieved by the addition of a 'Scale to DPI' option when adding an image or watermark, which – if checked – will mean that the application will actively reference the image's DPI values when resizing.

Report Wizard

Global Report Settings
Please specify any global report settings

Global Settings | Customer Details | Manufacturer Details | Style Information | Height Information | Unit Listings | Totals, Discounts | Layout Config

Based on Template: <User Defined>

Page Margins

☐ Different first page

	Default	First Page
Top	0	
Right	0	
Bottom	0	
Left	0	

Naming

Title:

☐ Show continuation title

Continuation Title:

Watermark: First Page Only

☒ Embedded ☐ Linked

☐ Scale to DPI

Path: C:\Users\smalja\Desktop\Logo.BMP

Report Wizard

Layout Configuration
Please specify the order in which your specified information should be displayed. You may also use this stage to add any images, free text, page breaks and section separators to your report.

Global Settings | Customer Details | Manufacturer Details | Style Information | Height Information | Unit Listings | Totals, Discounts | Layout Config

<Start Repeat>
<End Repeat>
Unit Information section: "Design Items"
Style Information section
Height Information

Section Configuration

Free Text | Prompted Notes | Column Settings
Image | Separation Gap | Embedded Image
Edit Totals Text

Edit Image Field

Image Location: C:\Users\smalja\Desktop\Logo.BMP

Browse

Justification

☒ Left ☐ Centre ☐ Right

☒ Scale to DPI

OK Cancel

Ability to Apply Blocks from Multiple Catalogues in the Same Design & EANCOM Associated Link for Ordering for rooms with Multiple Blocks (v7.1)

In Version 7.1 onwards, 2020 Fusion offers users the ability to apply block pricing for two or more manufacturers' catalogues in a given design; previously a user was restricted to only a single manufacturer's block per design.

This new functionality is activated by setting a preference found in the 'Pricing' section of 2020 Fusion's 'Options':

Internet Settings

Measurements

Movie Generation Settings

Named Views

Notification

Planning Defaults

Predefined Views

Pricing

Render Settings

Block Evaluation

☒ Enable Blocks From Multiple Catalogues

☐ Show Blocks with an Invalid Date Range by Default
When enabled, Block Evaluation can add blocks from multiple catalogues to a design

☒ Enable

Minimum Price Required for Real Time Blocks to be Evaluated. £ 1,000.00

☐ Show Block Balance Group Column in the Block Evaluation dialog.

Block Evaluation Balance Group surge/unused

☐ Show Block Balance Group Surcharge/Unused using '+/-'.

☐ Show Block Balance Group Surcharge/Unused using colour text red/blue.

☐ Show Block Balance Group Surcharge/Unused using braces.

When operational, the Block Evaluation user interface is modified accordingly in all necessary areas (including the Pricing Control Centre) to support the use of multiple manufacturers, thereby allowing the designer to take the appropriate action for each manufacturer in turn:

Block Evaluation

Block Catalogue: Nobilia 2019 ☒ Use Selected Block

Unit Name	Block Type	Advantage	Advantage%	Room Price	Tot.	Tot.	Start Date	End Date
B177577L1112 (Nobi...	Alle	£ 3,616.00	46.31 %	£ 4,192.00	£ 36...		1/11/18	31/12/19
B171205L1112 (Nobi...	Alle	£ 3,571.00	45.74 %	£ 4,237.00	£ 11...		1/11/18	31/12/19
B177577Z1L1112 (N...	Alle	£ 3,402.00	43.57 %	£ 4,406.00	£ 40...		1/11/18	31/12/19
B177575L1112 (Nobi...	Alle	£ 3,366.00	43.11 %	£ 4,442.00	£ 47...		1/11/18	31/12/19
B171205Z1L1112 (N...	Alle	£ 3,357.00	42.99 %	£ 4,451.00	£ 11...	£ 23...	1/11/18	31/12/19
B177579L1112 (Nobi...	Alle	£ 3,348.00	42.88 %	£ 4,460.00	£ 93...		1/11/18	31/12/19
B171207L1112 (Nobi...	Alle	£ 3,244.00	41.55 %	£ 4,564.00	£ 1...		1/11/18	31/12/19
B177572Z1L1112 (N...	Alle	£ 3,198.00	40.96 %	£ 4,610.00	£ 64...		1/11/18	31/12/19
B177575Z1L1112 (N...	Alle	£ 3,152.00	40.37 %	£ 4,656.00	£ 47...	£ 23...	1/11/18	31/12/19
B171205Z1L1112 (N...	Alle	£ 3,152.00	40.37 %	£ 4,656.00	£ 11...	£ 47...	1/11/18	31/12/19
B177579Z1L1112 (N...	Alle	£ 3,133.00	40.13 %	£ 4,675.00	£ 1...		1/11/18	31/12/19
B177581L1112 (Nobi...	Alle	£ 3,110.00	39.83 %	£ 4,698.00	£ 1...		1/11/18	31/12/19
B163893L1112 (Nobi...	Alle	£ 3,081.00	39.46 %	£ 4,727.00	£ 1...		1/11/18	31/12/19
B177573L1112 (Nobi...	Alle	£ 3,036.00	38.88 %	£ 4,772.00	£ 98...		1/11/18	31/12/19
B171207Z1L1112 (N...	Alle	£ 3,030.00	38.81 %	£ 4,778.00	£ 1...		1/11/18	31/12/19
B177572Z1L1112 (N...	Alle	£ 3,010.00	38.55 %	£ 4,798.00	£ 88...		1/11/18	31/12/19

☒ Collapse all rows

☐ Show Blocks With An Invalid Date Range

Existing block(x): B177577L1112 (Nobilia Alliance Bloöke 2019 ALL-OKR)

Summary

Original Room Price	£ 9,654.00
Nobilia Alliance Bloöke 2019 ALL-OKR (B1...	£ 3,616.00
Schüller C Bloöke 2019 ALL-OKR (BL5997...	£ 1,333.00
Häcker Classic Bloöke 2019 ALL-OKR (B1...	£ 513.00
New Room Price	£ 4,192.00

As not all items within the design are available, block evaluation will not produce optimum results.

Finish Cancel

To complement this development, corresponding changes have also been made to 2020 Fusion's EAN COM solution in order to ensure that all orders generated whilst working in this mode are correct in terms of the management of linked items.

Report Wizard Not to Display Graphic/Order Dimensions of Units Set to 0 x 0 x 0 (v7.1)

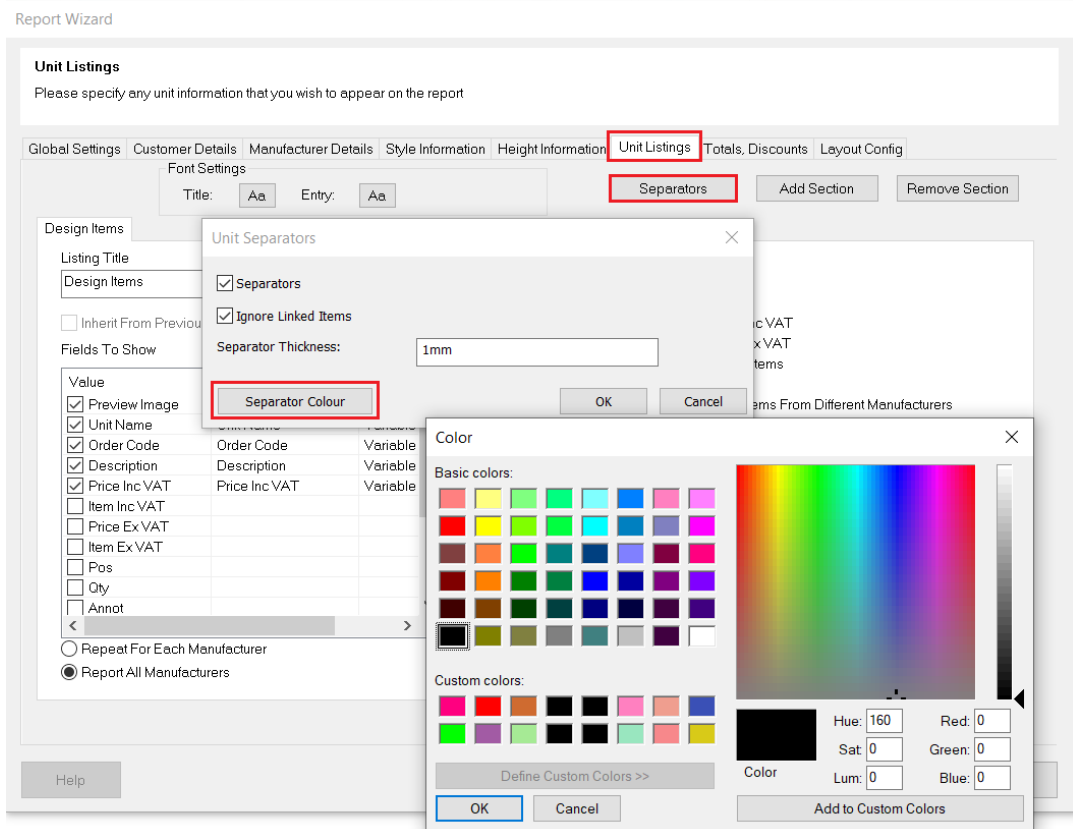
In 2020 Fusion's Report Wizard reports, rather than an entry of "0 x 0 x 0", the generated reports will now suppress the display of x/y/z dimensions for any design or order items that have no graphic and order dimensions at all, thereby making reports look cleaner and eliminating any possible confusion for the reader.

This is of particular benefit for 'Block Headers', for example, which do not possess any dimensions themselves:

Pos	Qty	Unit Name	Description	Graphic Dims	Order Dims
1	1	B181131L1112	Kollektion		
1.1	1	U100	Unterschrank	1000mm x 561mm x 720mm	1000mm x 561mm x 720mm
1.2	1	U100	Unterschrank	1000mm x 561mm x 720mm	1000mm x 561mm x 720mm
1.3	1	U100	Unterschrank	1000mm x 561mm x 720mm	1000mm x 561mm x 720mm
1.4	1	U100	Unterschrank	1000mm x 561mm x 720mm	1000mm x 561mm x 720mm
1.5	1	U100	Unterschrank	1000mm x 561mm x 720mm	1000mm x 561mm x 720mm
1.6	1	U100	Unterschrank	1000mm x 561mm x 720mm	1000mm x 561mm x 720mm
1.7	1	U100	Unterschrank	1000mm x 561mm x 720mm	1000mm x 561mm x 720mm
1.8	1	U100	Unterschrank	1000mm x 561mm x 720mm	1000mm x 561mm x 720mm
1.9	1	U100	Unterschrank	1000mm x 561mm x 720mm	1000mm x 561mm x 720mm
1.10	1	U100	Unterschrank	1000mm x 561mm x 720mm	1000mm x 561mm x 720mm

Report Wizard: Ability to Add Line Separators in Unit Listing Section (v7.2)

Functionality has been added to allow users of Report Wizard to specify if they want line separators to be displayed after units and linked units. They will also be able to specify the thickness and colour of these line separators.



Example output including separators..

Pos	Qty	Unit Name	Handling	Description	Graphic Dims
1	1	U100		Unterschrank	1000mm x 561mm x 720mm
2	1	U80		Unterschrank	800mm x 561mm x 720mm
2.1	1	U60	Left	Unterschrank	600mm x 561mm x 720mm
2.2	1	BU6058	Left	Badezimmer-Unterschrank	600mm x 461mm x 576mm
3	1	SPU60	Left	Spülenschrank	600mm x 561mm x 720mm

Report Wizard: Show Preview Images For 2020 Cloud Design Items (v7.2)

When configuring a Report Wizard report to also include a preview image, the output will now display not only preview images of design items added from 'file-based' catalogues, but also preview images of design items added from 2020 Cloud based catalogues.

Report Wizard

Unit Listings
Please specify any unit information that you wish to appear on the report

Global Settings | Customer Details | Manufacturer Details | Style Information | Height Information | **Unit Listings** | Totals, Discounts | Layout Config

Font Settings
Title: Entry:

Separators | Add Section | Remove Section

Design Items

Listing Title

☐ Inherit From Previous Listing

Fields To Show

Value	Label	Column
<input checked="" type="checkbox"/> Preview Image	Preview Image	30mm
<input checked="" type="checkbox"/> Unit Name	Unit Name	Variable
<input checked="" type="checkbox"/> Order Code	Order Code	Variable
<input checked="" type="checkbox"/> Description	Description	Variable
<input checked="" type="checkbox"/> Price Inc VAT	Price Inc VAT	Variable
<input type="checkbox"/> Item Inc VAT		
<input type="checkbox"/> Price Ex VAT		
<input type="checkbox"/> Item Ex VAT		
<input type="checkbox"/> Pos		
<input type="checkbox"/> Qty		
<input type="checkbox"/> Annot		

☐ Repeat For Each Manufacturer
☒ Report All Manufacturers

Display Categories

☒ Kitchen Unit
☐ Bedroom Unit
☐ Bathroom Unit
☐ Decorative
☒ Worktop
☒ Sanitary Ware
☒ Appliance
☐ Accessory
☐ Table & Chair
☐ Cupboard
☐ Service
☐ Filling

Options

☐ Show Subtotal Inc VAT
☐ Show Subtotal Ex VAT
☐ Mark Zero VAT Items
☒ Group By Links
☐ Show Linked Items From Different Manufacturers
☐ Show Sub Item Prices
☐ Collate Duplicate Items
☐ Mark 'Changed' Items
☐ Show Fixtures
☐ Show Graphic Items
☐ Show Non-Standards
☐ Show Variable Dimensions As Part Of Description
☐ Show Alternative Unit Section Alternative Unit(s)
☐ Show Only Alternative Units
☐ Show Trade Block (if relevant)

Design Items

Unit Name	Order Code	Description
	880	800mm Drainline Base Unit
	880	800mm Drainline Base Unit
	880	800mm Drainline Base Unit
	8010802DL	1000mm drainline corner base unit double doors and dummy doors 800mm deep
	CG48P1	Fully Integrated Refrigerator. A Cool built-in fridge. Freezer/Hotbox

EAN COM Order Generation: Conformity with EDIGRAPH Version 1.51 Definition Document (v7.2)

2020 Fusion's EAN COM Order Generation functionality has been updated to fully align with the rules defined in the EDIGRAPH Version 1.51 Definition Document (also referencing the IDM 2.5.0 XML Schema). Specifically, changes have been made to fully adhere to the defined rulesets for:

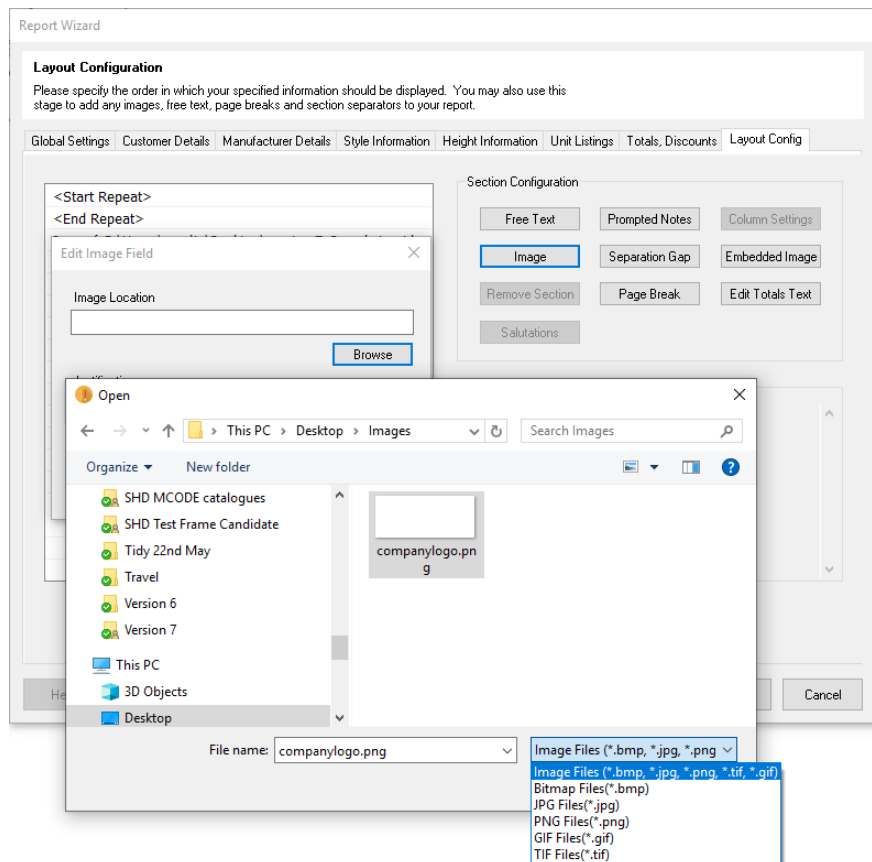
- Prevention of Blank Entries Against a Key
- Correct values/behaviour for 'Hinge'
- Correct values/behaviour for 'Shape'
- Correct values/behaviour for 'Construction Type'
- Correct values/behaviour for 'Poly Type'
- Correct values/behaviour for 'Angle Left/Right'

No changes have been made to the ordering mechanism itself, but the system's adherence to the newly specified rulesets could mean that previously undetected errors may now be exposed (and error messages generated) in Version 7.2 onwards when placing orders – but only in the unlikely event that the source content is configured incorrectly.

2020 Fusion Reporting: Support for Additional Image File Formats (v7.3)

2020 Fusion's 'Universal Report Suite' and its 'Report Wizard' tool both allow the user to incorporate images within the reports themselves. However, in previous versions of the application, the file formats supported were somewhat limited. With effect from version 7.3, the application now also supports the use of images in the following file formats:

- Universal Report Suite (specifically, the dealer 'logo.xyz' image in the application directory):
 - Previously supported: .JPG, .PNG and 24-bit/32-bit .BMP files
 - Support added for: 4-bit (16 colour) and 8-bit (256 colour) .BMP files, .TIF and .GIF
- Report Wizard (Images added via the 'Images' and 'Embedded Images' sections of the 'Layout Configuration' panel):
 - Previously supported and newly added formats are the same as indicated above.



2020 Fusion Reports to Support Text Spanning Multiple Pages (v7.4)

Previously, if a table in a 2020 Fusion report contained a text field that was itself longer than the height of the page, the application was not able to handle this scenario correctly and would not display the table at all. Version 7.4 provides a solution to this problem, by allowing the text field to be split across multiple pages. This solution benefits both Report Wizard and scripted reports.

EAN COM Ordering: Addition of 'Basic Shape' (Measurement) Information to EDIGRAPH Export File (IDM 2.7.0) (v7.4.2)

2020 Fusion's EAN COM ordering solution has been further extended so that the individual units exported in the EDIGRAPH file will now include extra measurement entries in the event that they have been identified as a particular 'basic shape' (from information contained in the original manufacturer's IDM file).

Depending upon the shape type, additional fields - beyond the standard 'B' (the overall X value in Fusion), 'T' (the overall 'Y' value in Fusion) and 'H' (the overall 'Z' value in Fusion) - will need to be exported.

With this solution in place, the EDIGRAPH output will now contain the additional shape measurements required by the recipient system. For example:

[Article_0001]

...

Measure_B=900

Measure_T=900

Measure_H=651

Measure_b1=320

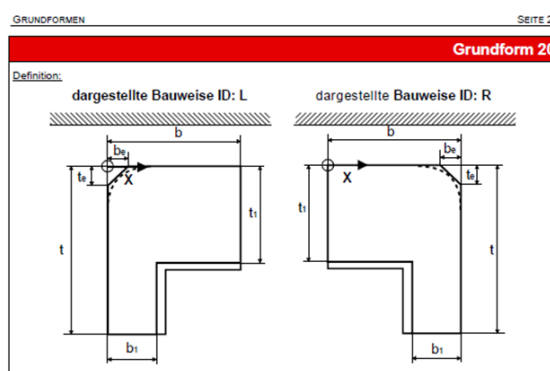
Measure_be=16

Measure_t1=320

Measure_te=16

...

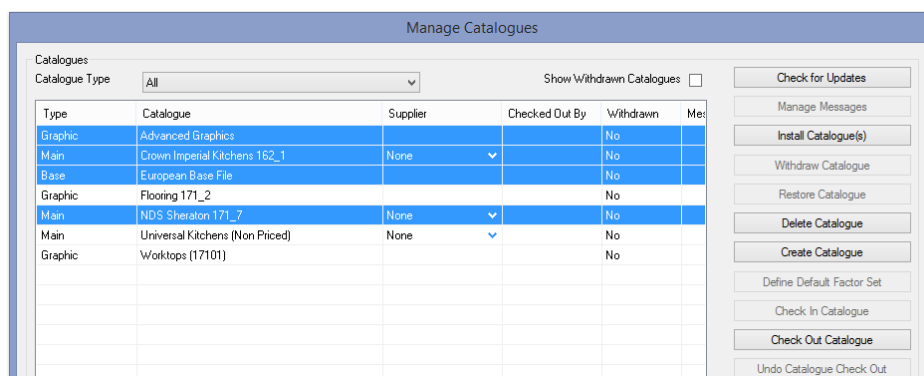
Shape=20



Catalogue & Customer Management

Connect 'Manage Catalogues' Dialog: Ability to Select & Apply Actions to Multiple Catalogues (v7.0)

The usability of the Manage Catalogues dialog in 'Connect' has been improved by allowing the user to select multiple catalogues using a combination of SHIFT and CTRL keys and apply the same action to them simultaneously. The specific actions supported in this respect are 'Delete Catalogue', 'Check In Catalogue', 'Check Out Catalogue', 'Undo Check Out Catalogue', 'Withdraw Catalogue' and 'Restore Catalogue'.



Display Additional 2020 Catalogue (Manufacturer) Information in 'General Information' Area (v7.0)

The 'General Information' details found in the 'Catalogue Information' area of the 'Home' ribbon has been updated to now also display additional manufacturer information - specifically the manufacturer's email address and website, if provided.

This enhancement applies to both file-based and 2020 Cloud catalogues.

The screenshot shows the 'Catalogue Information' dialog box. The 'General Information' tab is active, displaying the following details for 'Universal Kitchens (Non Priced)':

Manufacturer:	Universal Kitchens (Non Priced)
Address:	Inca House Trinity Road Ashford Kent TN25 4AB
Contact:	20-20 Technologies Limited
Telephone:	01233 635566
Email:	fusionsupport@2020spaces.com
Website:	www.2020spaces.com
Catalogue Version (Fusion):	111_52

The 'Email' and 'Website' fields are highlighted with a red box. The 'In Use' column shows 'No' for all manufacturers listed. The 'Height Linking' section on the right includes buttons for 'Link', 'Unlink', 'Height Table...', 'General Information...', 'Move Up', and 'Move Down'. The 'Supplier' dropdown is set to 'None'.

Connect: Check In/Check Out/Download Read Only to Support Selection of Multiple Customers (v7.3)

'Connect', 2020 Fusion's customer management system, has a facility allowing users to check out (and check back in) customers, or to check them out as 'read-only' so that the associated designs can be edited or viewed outside of the office environment. Up until now, these specific actions could only be performed one customer at a time, which was unnecessarily time-consuming.

In Version 7.3 onwards, Connect users are now able to select multiple customers for each of 'check out', 'check in' and 'check out read only'. All associated dialogs have also been updated to support multiple selection.

The screenshot shows the 'Check Out Customer Read Only' dialog box. It includes a search bar and a table of customers. The 'Salesperson' is set to 'Admin', 'Customer Status' is 'ANY', and 'Order By' is 'Customer ID, Ascending'.

ID	FirstName	Surname	2nd FirstName	2nd Surname	Ref	Sales Person	HomeAdd1	HomeAdd2	HomeAd
6	John	Smith			ADM/7	Admin	Inca House		
7	Joe	Bloggs			ADM/8	Admin	Inca House		

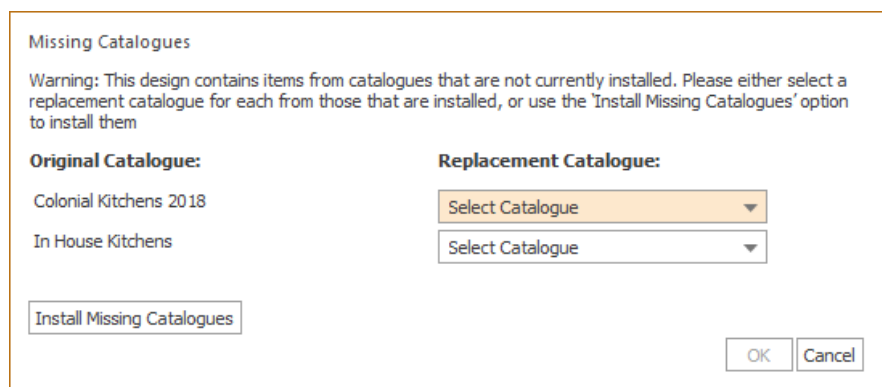
The table has a scrollbar at the bottom. The 'New' button is at the bottom left, and 'OK' and 'Cancel' buttons are at the bottom right.

Catalogue Management Enhancements: Improved Messaging (v7.3)

2020 Fusion designers use manufacturer 'catalogues' in the creation of designs for their customers. At present, most of these are 'file-based' catalogues and, as such, they need to be installed onto the system in order to be used. On occasions, there may be installation issues, or (references to) catalogues can be lost. In such instances, 2020 Fusion will present error messages, but - in several cases - these are either repetitive or not as helpful as they could be. These error messages have been reviewed, consolidated and enhanced in version 7.3, as follows:

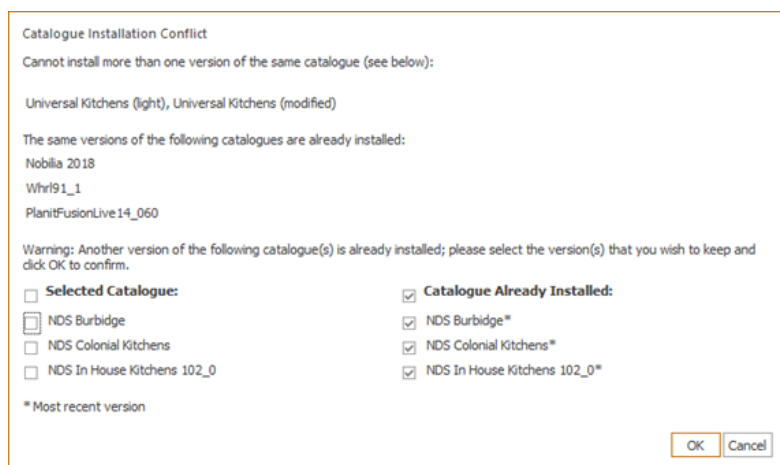
Open Design: Missing Catalogues

When opening a design for which catalogues are not presently installed, a single dialog now allows a user to either (re)install the missing catalogues, or to select replacement catalogues if the original has been legitimately removed.



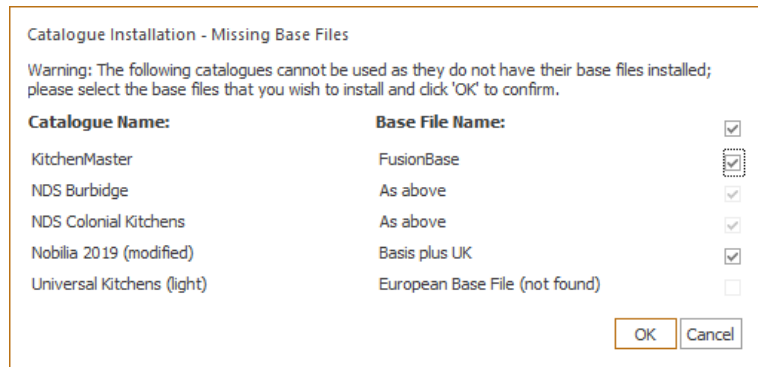
Catalogue Installation: Catalogue Conflicts

When installing catalogues, any cases of an identical catalogue or a different version of the same catalogue being installed are now communicated to the user within a single dialog. Previously, messages would be presented for each catalogue, one at a time.



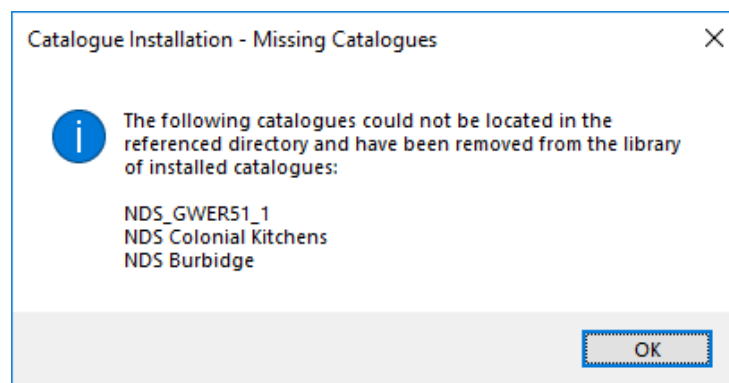
Catalogue Installation: Missing Base Files

Catalogues that have been installed, for which their base file is missing, are now referenced in a single dialog and the user is also given the chance to install the missing file. Previously this message was repeated one at a time and no opportunity was given to install the missing catalogues as part of the same process:



Catalogue Installation: Catalogues Missing From Library (Standalone)

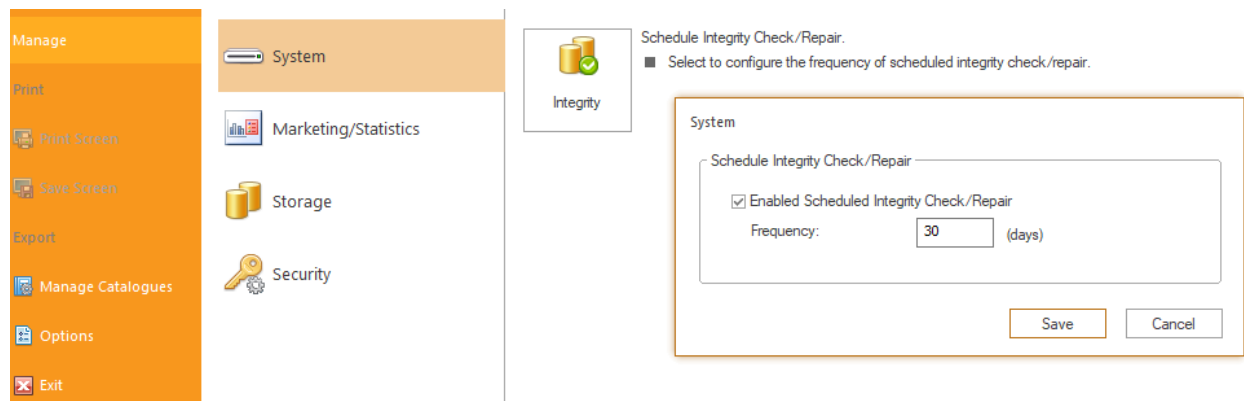
Catalogues that are referenced in 2020 Fusion's catalogue library, but can no longer be found in the referenced directory, are now listed in a single dialog.



Optimisation of Connect Database Management (Installation) (v7.4)

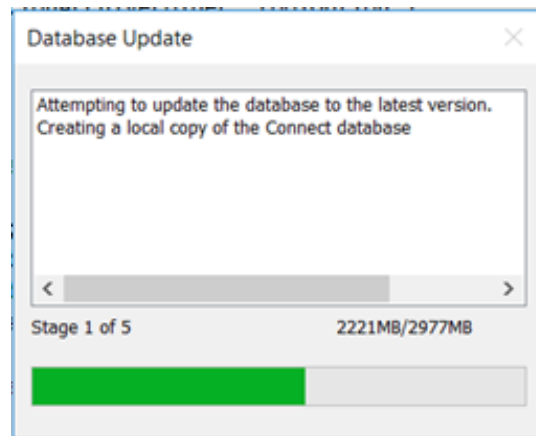
The following enhancements have been made to the 'Connect' customer database to ensure even greater efficiency and robustness when performing updates and integrity checks:

- During the installation of 2020 Fusion in a multi-user, shared Connect SQLite database environment, the number of database updates (and related integrity check/repairs) will be reduced to the single user who initiated the update.
- In addition, an integrity check/repair of a Connect SQLite database can be scheduled to run, prior to a user logging into Connect after a given number of days has elapsed (defined by a preference).

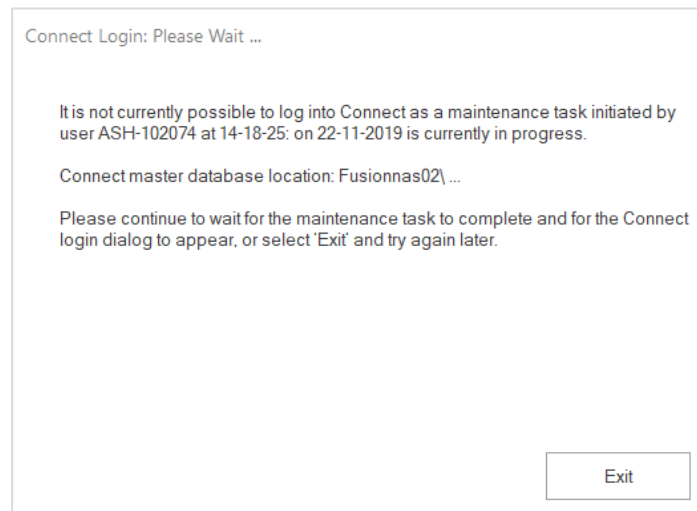


- Access to this area/preference is user privilege dependent.

- When an integrity check/repair is due, the user will be given the option whether to run it or not.
- An update and/or integrity check/repair of a Connect SQL database will be carried out on the PC local to the 2020 Fusion user instigating it.
 - Additional safety checks will be applied to ensure that users will still be able to access the Connect database if something went wrong during the integrity check/repair.
- The Database Utility Tool dialog which informs the user of maintenance actions being carried out, will be displayed to the user initiating the update for the duration of the process, with each stage being clearly indicated.



- The existing Connect Login Wait dialog has also been changed to display a more appropriate message when dealing with database Update and/or an Integrity Check/Repair.



CatAdmin: Import of Blocks into Child Catalogues from IDM to Conform with XML Schema 2.7.0 (v7.4.1)

2020 Fusion's 'Cat Admin' tool has a facility to allow a user to import block files relating specifically to themselves or to a buying group of which they are a member.

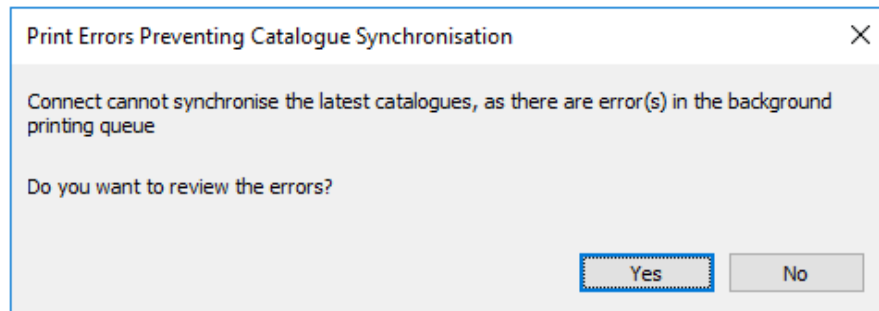
However, a recent update to the IDM schema - specifically IDM v2.7.0 - meant that a change needed to be made to the XML Block Import mechanism in Cat Admin. With this technical change, users can continue to use this import facility in exactly the same way as before.

Content Production & Deployment

Warning Dialog When Background Printing Error Prevents Catalogue Synchronisation (v7.3)

If a user has an issue with their background printing queue, where one or more items has an error, 2020 Fusion is not able to synchronise catalogues to their latest versions when running in Connect mode.

To overcome this issue and also to provide greater visibility to the user of any print queue issues, a new warning message is now generated, providing the ability to directly access and review the print queue.



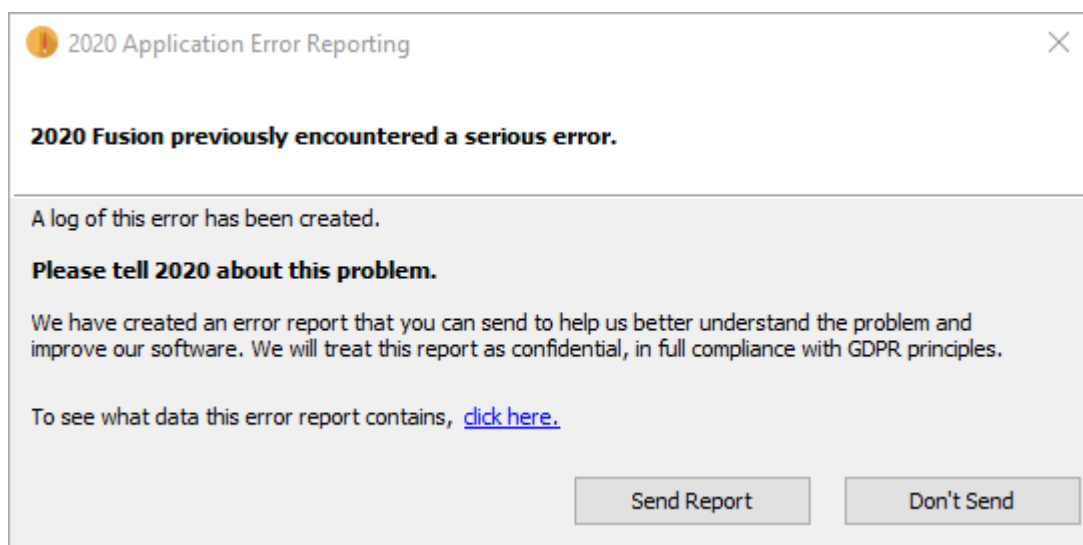
Miscellaneous, Architectural & Non-Coded

2020 Cloud Support for 4K Monitors (v7.2)

Effective from version 7.2, the 2020 Cloud Browser and 2020 Cloud Account Login areas of the product are now correctly optimised to operate at higher screen resolutions consistent with the rest of the 2020 Fusion application.

2020 Crash Dump Reporting/Collection Solution (v7.3)

Consistent with similar functionality that exists for Microsoft's own products, we have now introduced the ability for an end-user to automatically send detailed information to 2020 in the event of an application crash occurring.



In the case of 2020 Fusion, the above dialog will appear the first time the application is launched after a crash has occurred. Although the sending of a report is entirely optional, we would encourage all end-users of 2020 Fusion to always send the reports where possible.

The 2020 Fusion Development Team will regularly review the generated reports with a view to taking the necessary actions to improve the level of product quality for future releases.

‘Report a Remedial’ Facility Restored (v7.4.2)

An issue ultimately caused by changes made by Google in respect of STMP management has now been resolved, meaning that 2020 Fusion’s ‘Report a Remedial’ facility is now once again fully functional in Version 7.4.2 onwards.