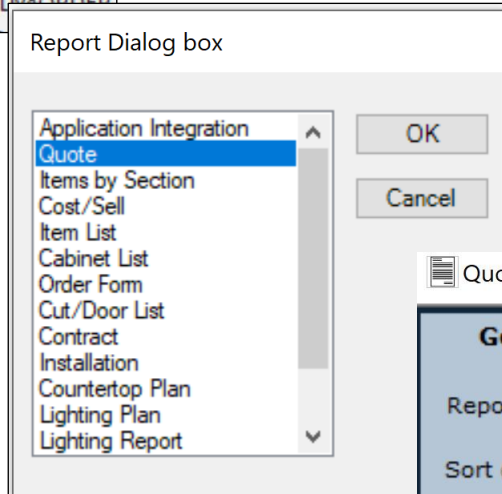
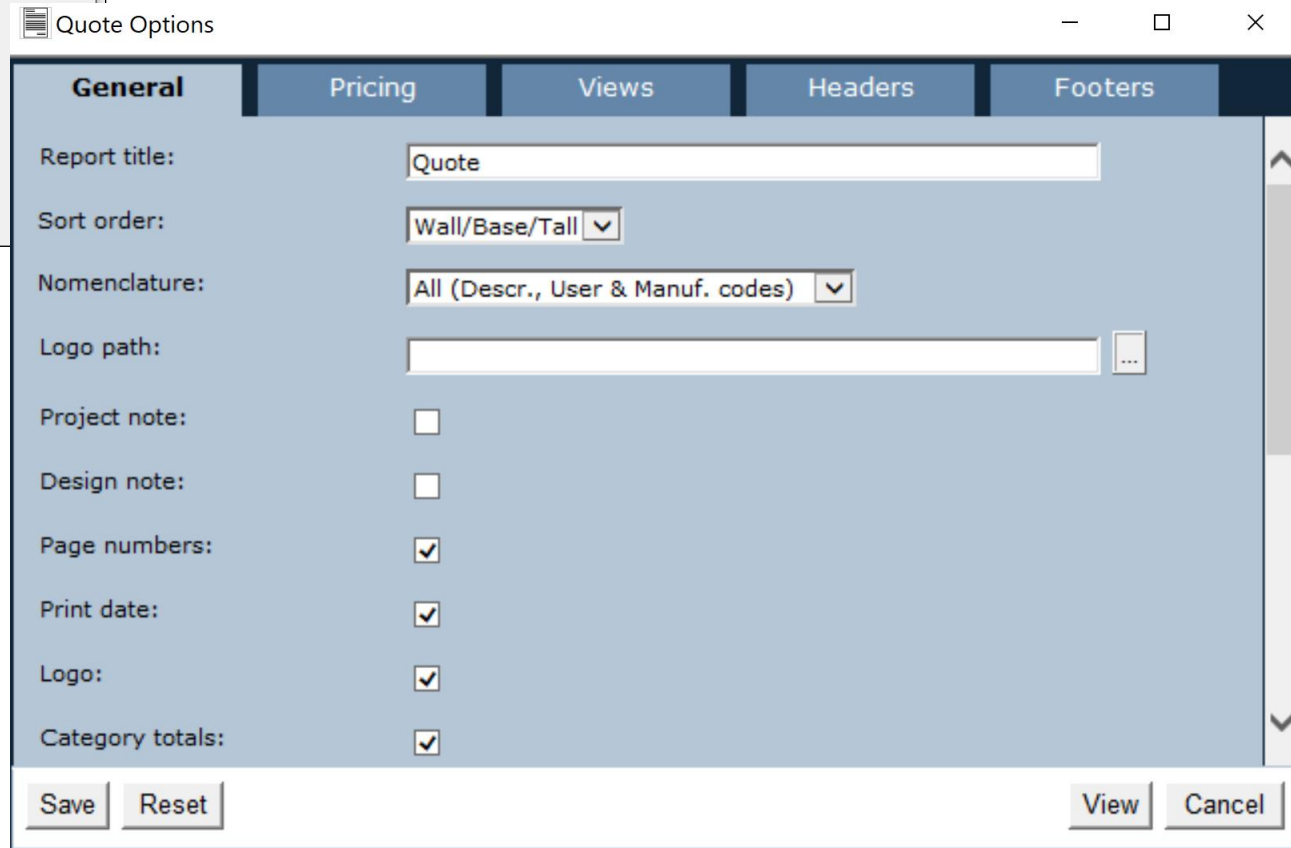


We generate a **Report** to create a parts list for to send to the cabinet manufacturer



We choose **Quote** because it has pricing and provides all details for order entry department at cabinet manufacturer



We Click **View** to generate the Quote

CATALOG 2020 Decorative Items_18_1

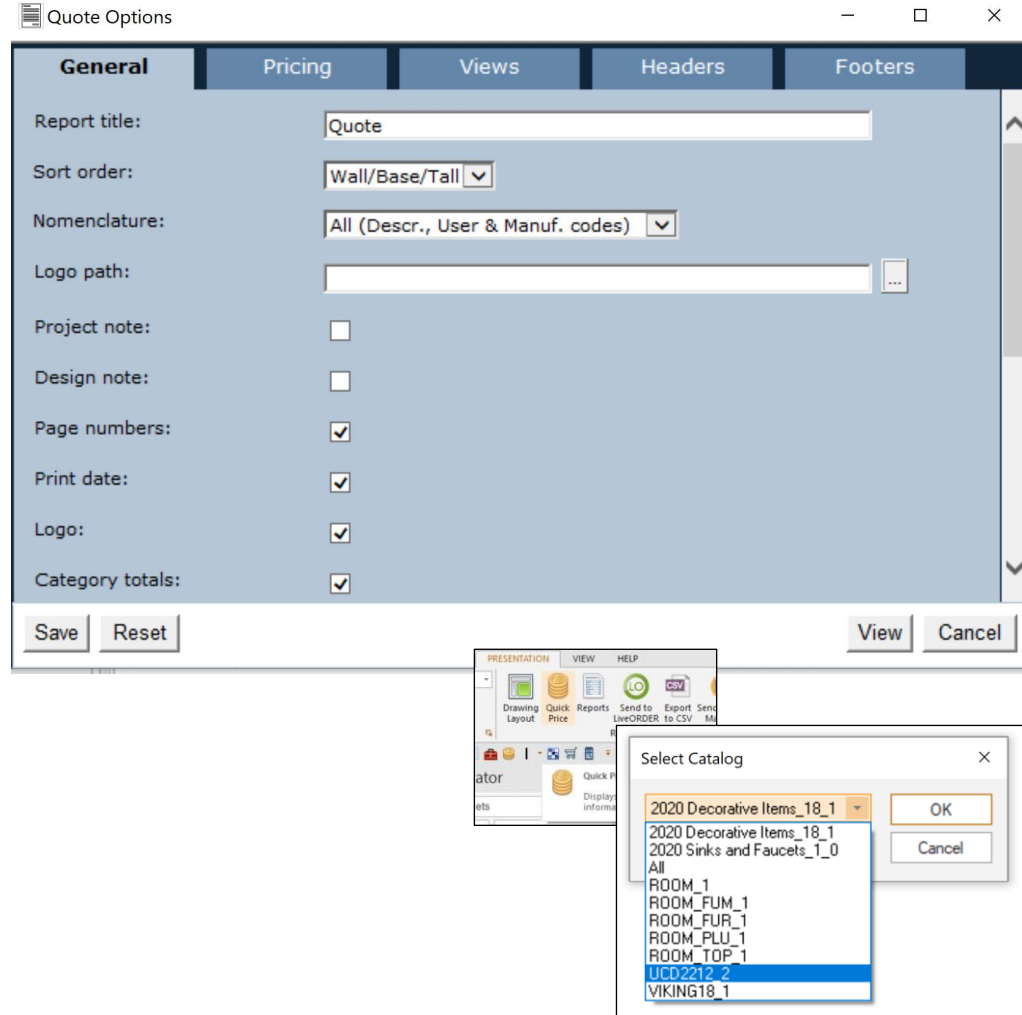
Supplier 20-20 Technologies

Wall Door
Tall Door
Base Door
Door style
Drawer Front
Drawer Pull
Door Pull

#	Qty	User code	Manuf. code	Description	Price
Accessories					
1	1	Books_14		Books	0.00
2	1	Computer_Monitor_2		Desktop computer monitor	0.00
3	1	Picture_Frame_1		Double sided picture frame with bears	0.00
4	1	Vase_20		Pear shaped vase	0.00
5	1	Office_Printer		Small office printer/scanner	0.00
6	1	Bottle_Red_Wine_1		Black bottle of red wine with label	0.00
7	1	Wine_Glasses_1		Pair of wine glasses	0.00
8	1	Bottle_Champagne_e		Bottle of champagne with white label and black top	0.00
9	1	Mirror_Rec_2		Small rectangular wall mirror with frame	0.00

Accessories net total 0.00**2020 Decorative Items_18_1 Net Total** 0.00

Unfortunately, every item used in the design from ANY catalog will appear on the Quote. This clutters up the Quote with too many unnecessary items which must manually be removed by the designer before sending the Quote to the manufacturer.



Solution: add a Select Catalog option to the **General** tab in **Quote Options**. 2020 already offers that feature with the **Quick Price** tool as shown here.

I need to have the option of generating a Quote using only the catalog that I choose/need.

Supplier	Ultracraft Cabinetry		
Wall Door	Oakland Park Cherry	Drawer Front	Wood Dovetail Drawer Box w/Soft Close
Tall Door	Oakland Park Matching Drawer	Drawer Pull	Stainless Steel Pull (Count Purpose Only)
Base Door	Front	Door Pull	Stainless Steel Pull (Count Purpose Only)
Door style	Cherry {8}		

#	Qty	Description	User code	Manuf. code	Cherry (8)	Cherry (7)
Cabinets						
17	1	Wall Cabinet			977.00	888.00
		W1836L		W1836		
17.1	1	Door Overhang			86.00	86.00
		DOOR.OVRHG		DOOR.OVRHG		
17.2	1	Height Increase Wall {H=37-1/2"} HEIGHT INC		HEIGHT INC	0.00	0.00
		WALL		WALL		
17.3	1	Width Increase Wall {W=18-1/2"} WIDTH INC		WIDTH INC	0.00	0.00
		WALL		WALL		
18	1	Wall Cabinet			1,470.00	1,337.00
		W3636		W3636		
18.1	1	Door Overhang			86.00	86.00
		DOOR.OVRHG		DOOR.OVRHG		
18.2	1	Height Increase Wall {H=37-1/2"} HEIGHT INC		HEIGHT INC	0.00	0.00
		WALL		WALL		
18.3	1	Width Increase Wall {W=37"} WIDTH INC		WIDTH INC	0.00	0.00
		WALL		WALL		
19	1	Open Shelf 74"W 12"D			696.83	696.83
		OPENSHELF		OPENSHELF		
20	1	Wall Cabinet			1,621.00	1,462.00
		W2748		W2748		
		No center rail on door, it is understood this will void the warranty on the door				
20.1	1	Height Increase Wall {H=49-1/2"} HEIGHT INC		HEIGHT INC	184.00	184.00
		WALL		WALL		
20.2	1	Door Overhang Right Down			86.00	86.00
		DOOR.OVRHG. RD		DOOR.OVRHG. RD		
21	1	Wall Cabinet w/ Flip Door			1,401.00	1,310.00
		WP3021-15HK		WP3021-15HK		

Supplier	Ultracraft Cabinetry		
Wall Door	Oakland Park Cherry	Drawer Front	Wood Dovetail Drawer Box w/Soft Close
Tall Door	Oakland Park Matching Drawer	Drawer Pull	Stainless Steel Pull (Count Purpose Only)
Base Door	Front	Door Pull	Stainless Steel Pull (Count Purpose Only)
Door style	Cherry {8}		

#	Qty	Description	User code	Manuf. code	Cherry (8)	Cherry (7)
Cabinets						
17	1	Wall Cabinet			977.00	888.00
		W1836L		W1836		
17.1	1	Door Overhang			86.00	86.00
		DOOR.OVRHG		DOOR.OVRHG		
17.2	1	Height Increase Wall {H=37-1/2"} HEIGHT INC		HEIGHT INC	0.00	0.00
		WALL		WALL		
17.3	1	Width Increase Wall {W=18-1/2"} WIDTH INC		WIDTH INC	0.00	0.00
		WALL		WALL		
18	1	Wall Cabinet			1,470.00	1,337.00
		W3636		W3636		
18.1	1	Door Overhang			86.00	86.00
		DOOR.OVRHG		DOOR.OVRHG		
18.2	1	Height Increase Wall {H=37-1/2"} HEIGHT INC		HEIGHT INC	0.00	0.00
		WALL		WALL		
18.3	1	Width Increase Wall {W=37"} WIDTH INC		WIDTH INC	0.00	0.00
		WALL		WALL		
19	1	Open Shelf 74"W 12"D			696.83	696.83
		OPENSHELF		OPENSHELF		
20	1	Wall Cabinet			1,621.00	1,462.00
		W2748		W2748		
		No center rail on door, it is understood this will void the warranty on the door				
20.1	1	Height Increase Wall {H=49-1/2"} HEIGHT INC		HEIGHT INC	184.00	184.00
		WALL		WALL		
20.2	1	Door Overhang Right Down			86.00	86.00
		DOOR.OVRHG. RD		DOOR.OVRHG. RD		
21	1	Wall Cabinet w/ Flip Door			1,401.00	1,310.00
		WP3021-15HK		WP3021-15HK		

Supplier	Ultracraft Cabinetry		
Wall Door	Oakland Park Cherry	Drawer Front	Wood Dovetail Drawer Box w/Soft Close
Tall Door	Oakland Park Matching Drawer	Drawer Pull	Stainless Steel Pull (Count Purpose Only)
Base Door	Front	Door Pull	Stainless Steel Pull (Count Purpose Only)
Door style	Cherry {8}		

#	Qty	Description	User code	Manuf. code	Cherry (8)	Cherry (7)
Cabinets						
17	1	Wall Cabinet			977.00	888.00
		W1836L		W1836		
17.1	1	Door Overhang			86.00	86.00
		DOOR.OVRHG		DOOR.OVRHG		
17.2	1	Height Increase Wall {H=37-1/2"} HEIGHT INC		HEIGHT INC	0.00	0.00
		WALL		WALL		
17.3	1	Width Increase Wall {W=18-1/2"} WIDTH INC		WIDTH INC	0.00	0.00
		WALL		WALL		
18	1	Wall Cabinet			1,470.00	1,337.00
		W3636		W3636		
18.1	1	Door Overhang			86.00	86.00
		DOOR.OVRHG		DOOR.OVRHG		
18.2	1	Height Increase Wall {H=37-1/2"} HEIGHT INC		HEIGHT INC	0.00	0.00
		WALL		WALL		
18.3	1	Width Increase Wall {W=37"} WIDTH INC		WIDTH INC	0.00	0.00
		WALL		WALL		
19	1	Open Shelf 74"W 12"D			696.83	696.83
		OPENSHELF		OPENSHELF		
20	1	Wall Cabinet			1,621.00	1,462.00
		W2748		W2748		
		No center rail on door, it is understood this will void the warranty on the door				
20.1	1	Height Increase Wall {H=49-1/2"} HEIGHT INC		HEIGHT INC	184.00	184.00
		WALL		WALL		
20.2	1	Door Overhang Right Down			86.00	86.00
		DOOR.OVRHG. RD		DOOR.OVRHG. RD		
21	1	Wall Cabinet w/ Flip Door			1,401.00	1,310.00
		WP3021-15HK		WP3021-15HK		

Here is how the Quote looks with no hierarchy of items (whole numbers) and their attributes/attachments/add-ons.(numbers with decimal place after them) This is very difficult to read. The main item and the resulting modifications to the original item are only grouped together by the lead number of the line item.

Using lines to divide the main items is much easier to read . The line divides the items into their numerical groups. Now we don't have to use the line items as reference , instead it is evident that the items are all grouped together. From a programming/coding standpoint can't you simply have a solid line generated above each whole number? (a number without decimal after)

2020 used to have a "tree" feature . This would certainly work. Make it look something like the above.

The main goal needs to be a visual grouping for ease in review and interpretation from all parties

1. We need an arrow on the ribbon
2. Need program to open designs on laptops in the field at someone's home/location where no internet is available for whatever reason . Even if the design contains cloud items we need to be able to access without internet.